

# U.S. PUBLIC LAND SURVEY MONUMENT RECORD - GRANT COUNTY, WI

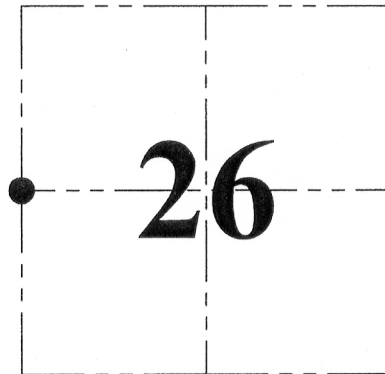
Section 26, Town 3 North Range 2 West, Town of Harrison

**CERTIFICATE:**

I, Aaron J. Austin, do hereby certify that the corner location on this record was determined by me and/or under my direct supervision and that this U.S. Public Land Survey Monument Record is correct and complete to the best of my knowledge and belief.

Dated this 3<sup>rd</sup> day of July, 2013.

*Aaron J. Austin*  
 Aaron J. Austin, S-2922



● = CORNER LOCATION

HISTORY OF CORNER ESTABLISHMENT:

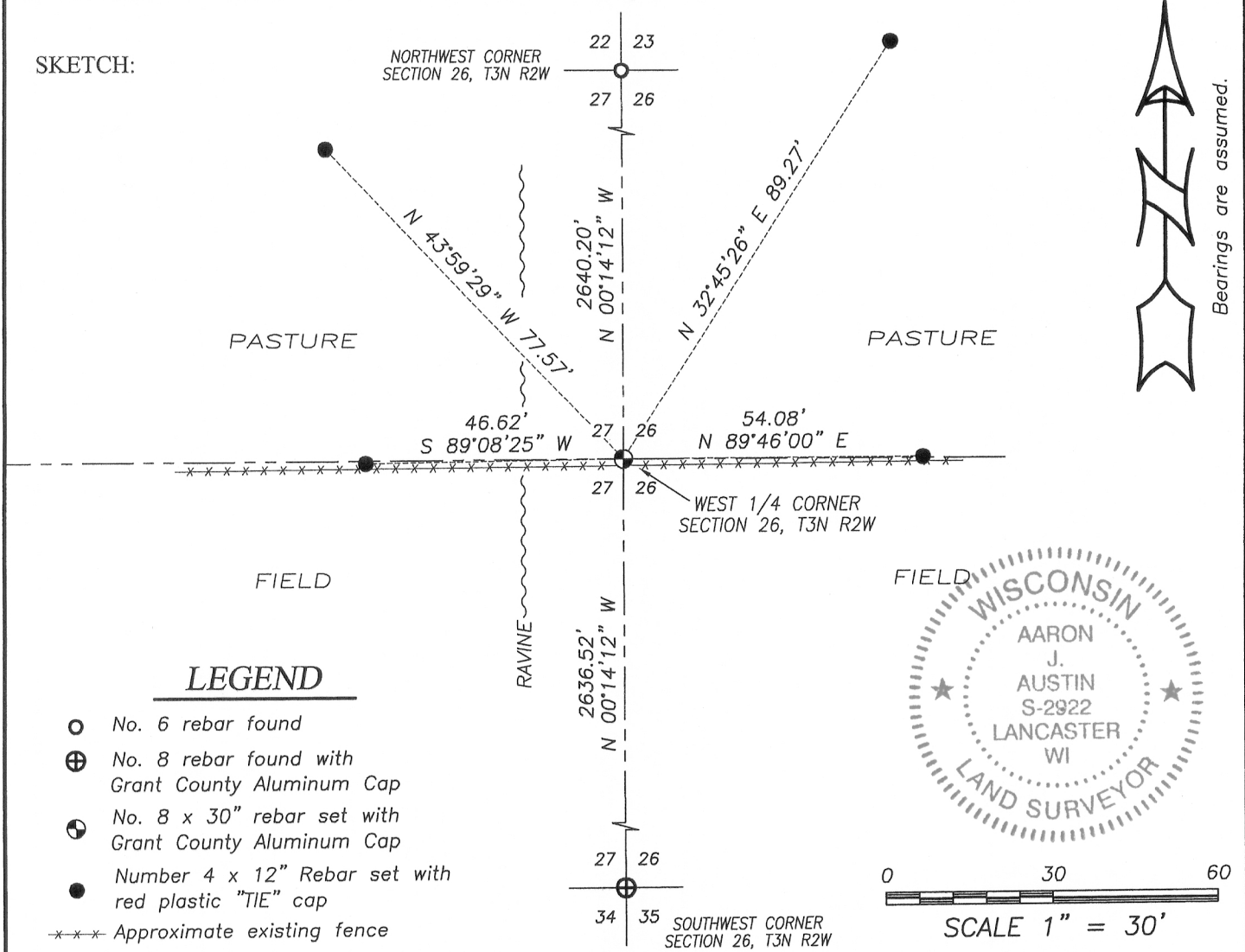
- 1833 Robert Clark set original corner.
- 1844 Wiltse tied to this corner on a survey in Section 27. (Book A, Page 203)
- 1856 Overton surveyed in this Section and made no reference to the corner. (Book B, Page 479)
- 1999 Stan King Surveyed along the West line of Section 26 and made no reference to the corner. (C.S.M. No. 549)

DESCRIPTION OF CORNER EVIDENCE FOUND:

No evidence of the corner was found. The Northwest corner of Section 26 was established by Stan King in 1999 per Certified Land Corner record. Stan noted that the NW corner was established by proportioning the North-South location. I reset the corner by holding the proportion from the West line of the SW 1/4 of Section 23 and online between the Northwest corner and Southwest corner of Section 26. This location put me in an existing East-West fence line. I verified this location by E.D.M. and G.P.S methods. For ties to adjoining Section Corners, see survey prepared by me filed in Book 33, Page 69, Grant County Surveys.

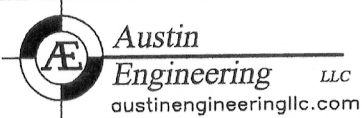
DESCRIPTION OF CORNER AND WITNESS MONUMENTS, references and accessories used to perpetuate the original or re-established location of this corner. Witnesses to corner location Shane Austin and Steffany Austin.

SKETCH:



**LEGEND**

- No. 6 rebar found
- ⊕ No. 8 rebar found with Grant County Aluminum Cap
- ⊗ No. 8 x 30" rebar set with Grant County Aluminum Cap
- Number 4 x 12" Rebar set with red plastic "TIE" cap
- \*\*\* Approximate existing fence



4211 HWY 81 E, LANCASTER, WI 53813  
 PHONE: 608-723-6363 FAX: 608-723-6702

JOB NO: 12s096  
 G:\T3NR2W\24  
 H:\TIE\T3NR2W\98

FIELDBOOK: TDSR  
 DRAWN BY: AJ AUSTIN  
 CREW: SA-SA