

GRANT COUNTY CERTIFIED LAND CORNER

CORNER NO. 104

CERTIFICATE:

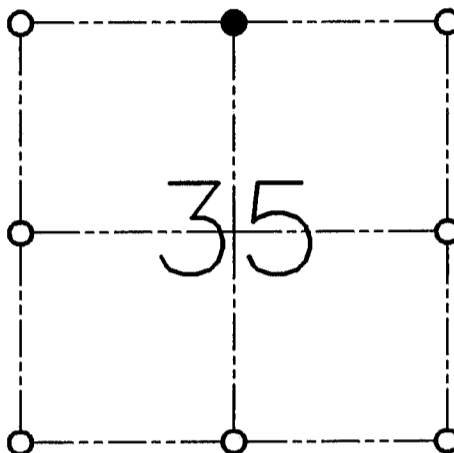
I, LARRY L. AUSTIN, DO HEREBY CERTIFY THAT ON TWELFTH DAY OF APRIL, 1999, I FOUND OCCUPATIONAL EVIDENCE OF THE NORTH 1/4 CORNER SECTION 35, TOWN 3 NORTH, RANGE 2 WEST, OF THE FOURTH PRINCIPAL MERIDIAN, AND I RE-ESTABLISHED SAID CORNER ACCORDING TO THE WISCONSIN STATUTES AS SHOWN AND DESCRIBED HEREON.

DATED THIS TWENTY-SIXTH DAY OF APRIL, 1999

Larry L. Austin
LARRY L. AUSTIN S-1903



SEAL



● = CORNER LOCATION

**NORTH 1/4 OF SECTION 35
T 3 N R 2 W
TOWN OF HARRISON**

HISTORY OF ORIGINAL CORNER ESTABLISHMENT:

CORNER WAS SET IN 1833 BY ROBERT CLARK.

DESCRIPTION OF CORNER EVIDENCE FOUND:

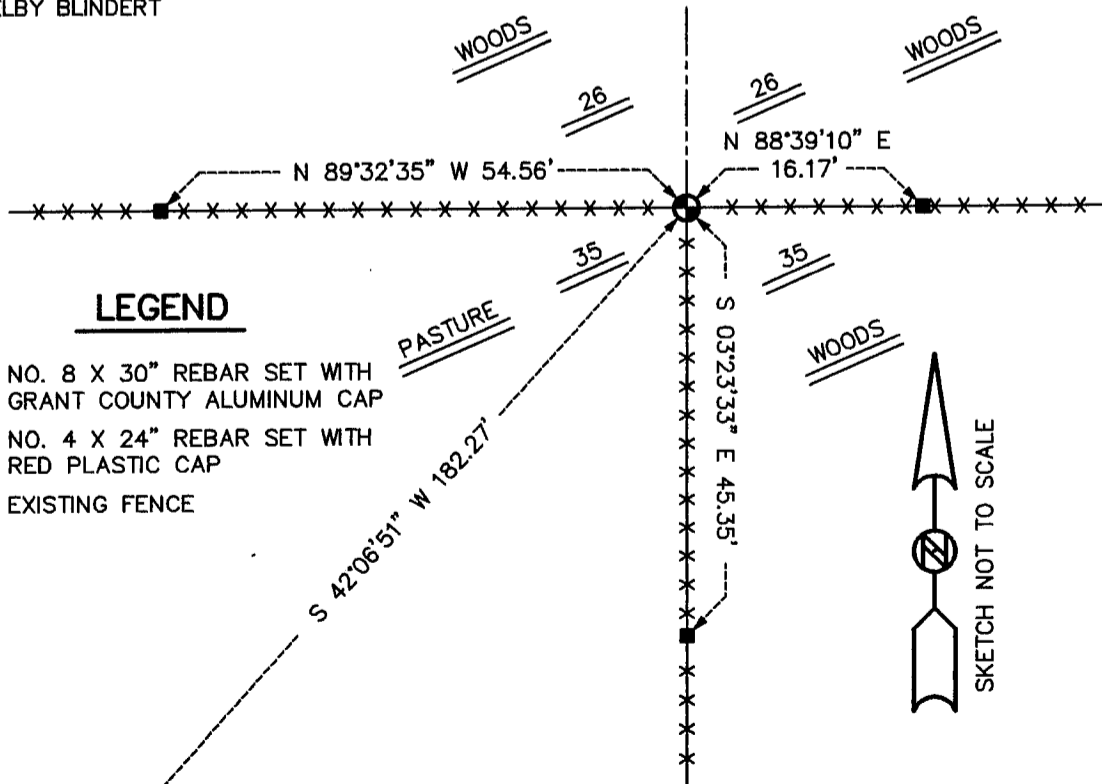
I RESET THE CORNER BASED ON OCCUPATIONAL EVIDENCE.
VERIFIED THIS LOCATION USING E.D.M. AND G.P.S. METHODS.

DESCRIPTION OF CORNER AND WITNESS MONUMENTS, REFERENCES AND ACCESSORIES USED TO PERPETUATE THE ORIGINAL OR RE-ESTABLISHED LOCATION OF THIS CORNER:

WITNESS TO THE CORNER LOCATION:

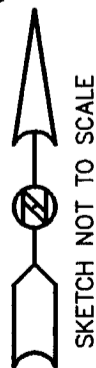
BOBBY SEDGWICK
SHELBY BLINDERT

SKETCH:



LEGEND

- NO. 8 X 30" REBAR SET WITH GRANT COUNTY ALUMINUM CAP
- NO. 4 X 24" REBAR SET WITH RED PLASTIC CAP
- x-x- EXISTING FENCE



16" WALNUT