

# GRANT COUNTY CERTIFIED LAND CORNER

CORNER NO. 103

**CERTIFICATE:**

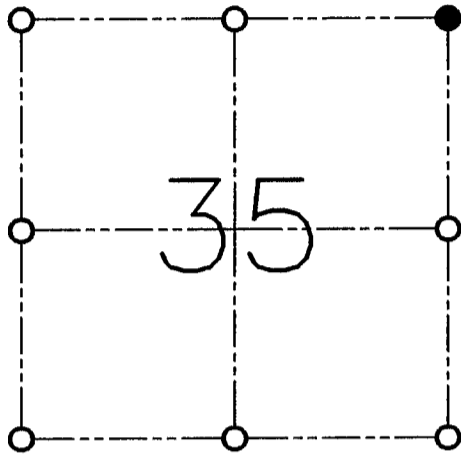
I, LARRY L. AUSTIN, DO HEREBY CERTIFY THAT ON TWELFTH DAY OF APRIL, 1999, I FOUND OCCUPATIONAL EVIDENCE OF THE NORTHEAST CORNER SECTION 35, TOWN 3 NORTH, RANGE 2 WEST, OF THE FOURTH PRINCIPAL MERIDIAN, AND I RE-ESTABLISHED SAID CORNER ACCORDING TO THE WISCONSIN STATUTES AS SHOWN AND DESCRIBED HEREON.

DATED THIS TWENTY-SIXTH DAY OF APRIL, 1999

*Larry L. Austin*  
LARRY L. AUSTIN S-1903



SEAL



● = CORNER LOCATION

**NORTHEAST CORNER  
SECTION 35, T 3 N R 2 W  
TOWN OF HARRISON**

**HISTORY OF ORIGINAL CORNER ESTABLISHMENT:**

CORNER WAS SET IN 1833 BY ROBERT CLARK.

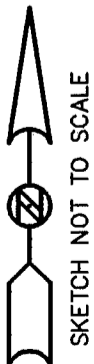
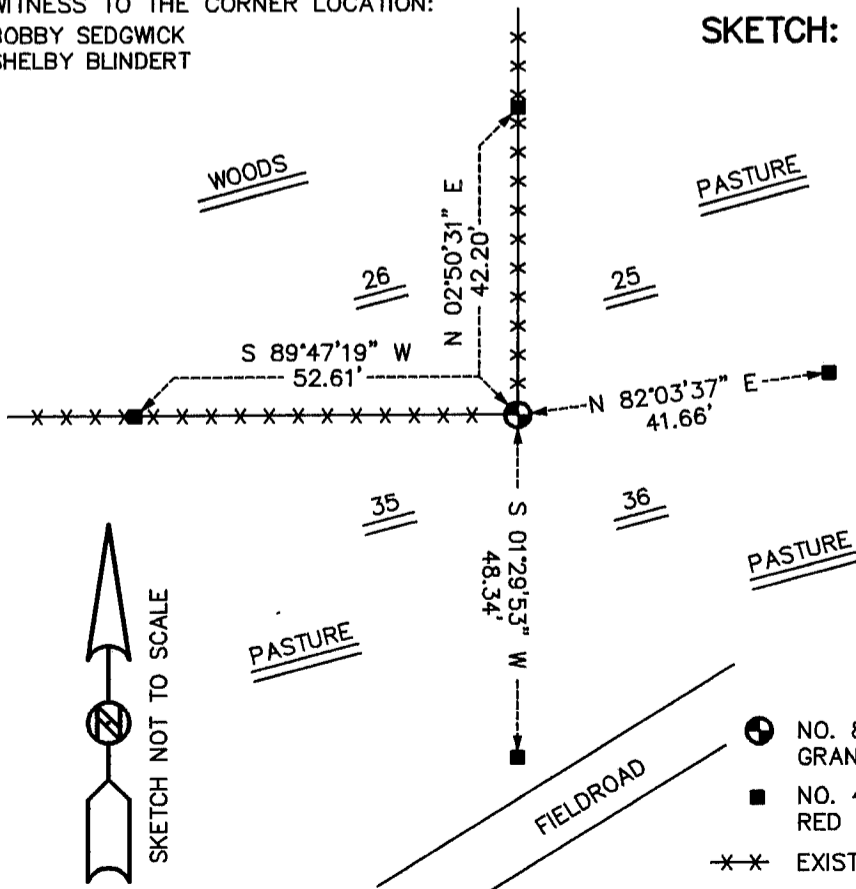
**DESCRIPTION OF CORNER EVIDENCE FOUND:**

I RESET THE CORNER BASED ON OCCUPATIONAL EVIDENCE.  
VERIFIED THIS LOCATION USING E.D.M. AND G.P.S. METHODS.

**DESCRIPTION OF CORNER AND WITNESS MONUMENTS, REFERENCES AND ACCESSORIES USED TO PERPETUATE THE ORIGINAL OR RE-ESTABLISHED LOCATION OF THIS CORNER:**

**WITNESS TO THE CORNER LOCATION:**  
BOBBY SEDGWICK  
SHELBY BLINDERT

**SKETCH:**



**LEGEND**

- NO. 8 X 30" REBAR SET WITH GRANT COUNTY ALUMINUM CAP
- NO. 4 X 24" REBAR SET WITH RED PLASTIC CAP
- xx EXISTING FENCE