

GRANT COUNTY CERTIFIED LAND CORNER

CORNER NUMBER 100

CERTIFICATE:

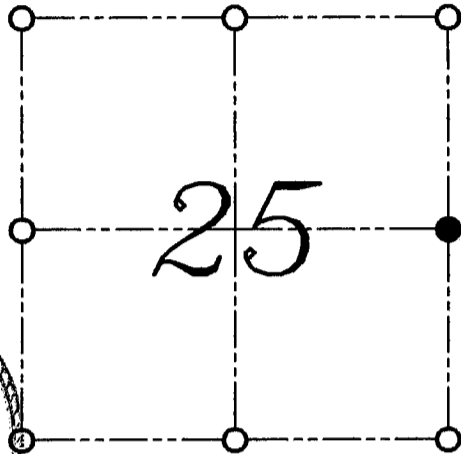
I, LARRY L. AUSTIN, DO HEREBY CERTIFY THAT ON THIRTIETH DAY OF APRIL, 1999, I FOUND MONUMENTED EVIDENCE OF THE EAST 1/4 CORNER SECTION 25, TOWN 3 NORTH, RANGE 2 WEST, OF THE FOURTH PRINCIPAL MERIDIAN, AND I RE-ESTABLISHED SAID CORNER ACCORDING TO THE WISCONSIN STATUTES AS SHOWN AND DESCRIBED HEREON.

DATED THIS TWENTY-SECOND DAY OF MAY, 1999

Larry L. Austin
LARRY L. AUSTIN S-1903



SEAL



● = CORNER LOCATION
EAST 1/4 CORNER OF
SECTION 25, T 3 N R 2 W
TOWN OF HARRISON

HISTORY OF ORIGINAL CORNER ESTABLISHMENT:

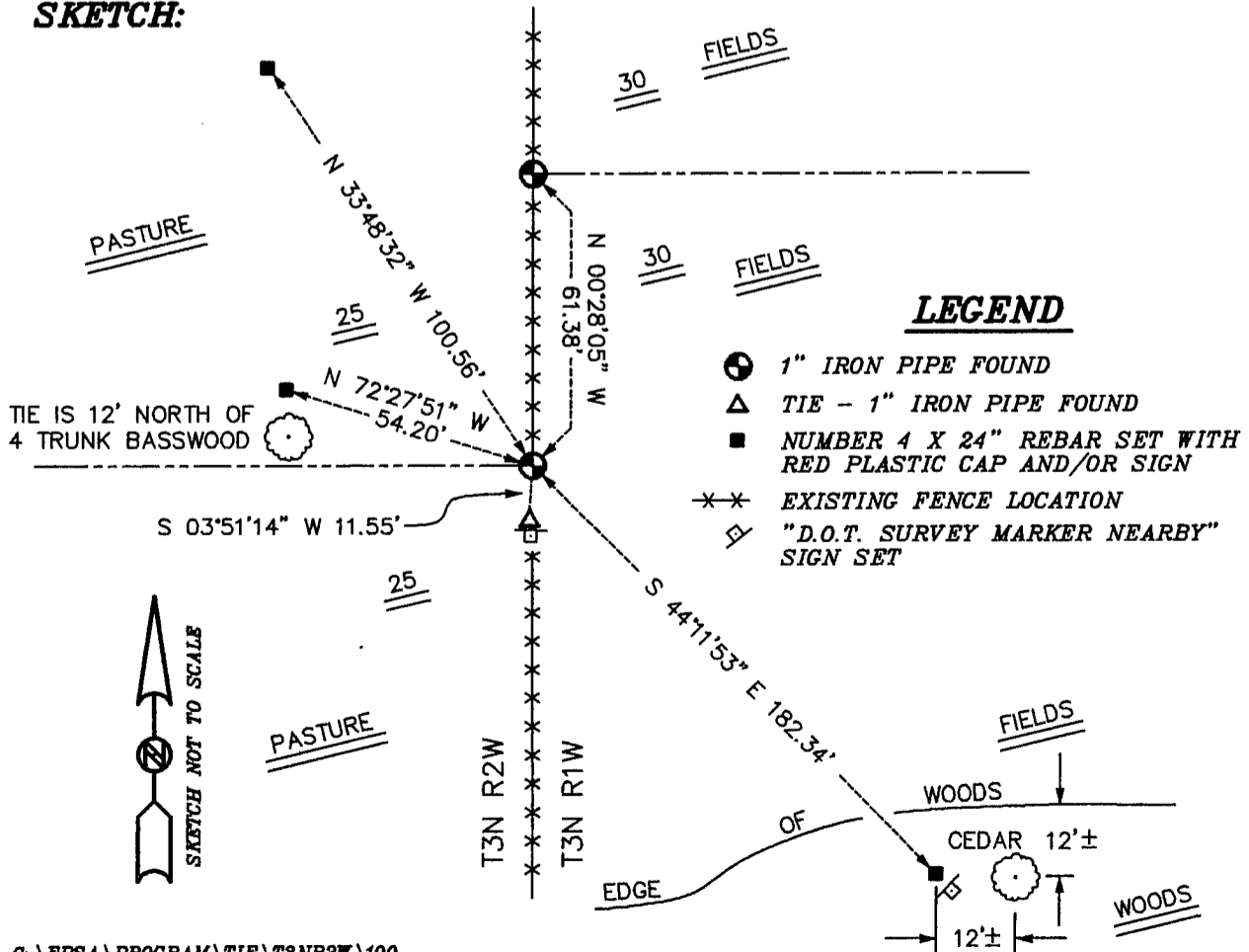
CORNER WAS SET IN 1832 BY LUCIUS LYON.
IN 1984 JOHN HALVERSON SET A 1" IRON PIPE.

DESCRIPTION OF CORNER EVIDENCE FOUND:

I FOUND THE 1" IRON PIPE AND ACCEPTED THIS LOCATION AFTER AN E.D.M. AND G.P.S. TRAVERSE OF THE AREA.

DESCRIPTION OF CORNER AND WITNESS MONUMENTS, REFERENCES AND ACCESSORIES USED TO PERPETUATE THE ORIGINAL OR RE-ESTABLISHED LOCATION OF THIS CORNER:
WITNESS TO THE CORNER LOCATION: BOBBY SEDGWICK ; SHELBY BLINDERT

SKETCH:



LEGEND

- 1" IRON PIPE FOUND
- △ TIE - 1" IRON PIPE FOUND
- NUMBER 4 X 24" REBAR SET WITH RED PLASTIC CAP AND/OR SIGN
- *-* EXISTING FENCE LOCATION
- "D.O.T. SURVEY MARKER NEARBY" SIGN SET

GRANT COUNTY CERTIFIED LAND CORNER

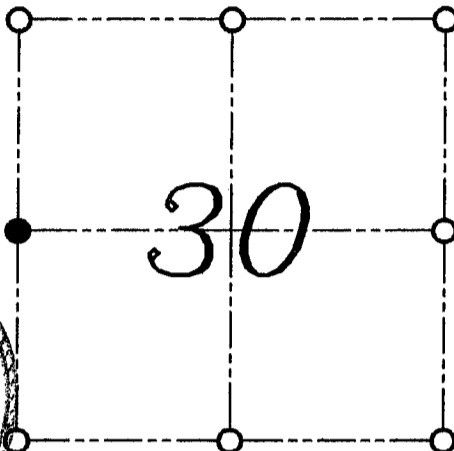
CERTIFICATE:

I, LARRY L. AUSTIN, DO HEREBY CERTIFY THAT ON THIRTIETH DAY OF APRIL, 1999, I FOUND MONUMENTED EVIDENCE OF THE WEST 1/4 CORNER SECTION 30, TOWN 3 NORTH, RANGE 1 WEST, OF THE FOURTH PRINCIPAL MERIDIAN, AND I RE-ESTABLISHED SAID CORNER ACCORDING TO THE WISCONSIN STATUTES AS SHOWN AND DESCRIBED HEREON.

CORNER NUMBER 94

DATED THIS TWENTY-SECOND DAY OF MAY, 1999

Larry L. Austin
LARRY L. AUSTIN S-1903



● = CORNER LOCATION
WEST 1/4 CORNER OF
SECTION 30, T 3 N R 1 W
TOWN OF PLATTEVILLE

SEAL

HISTORY OF ORIGINAL CORNER ESTABLISHMENT:

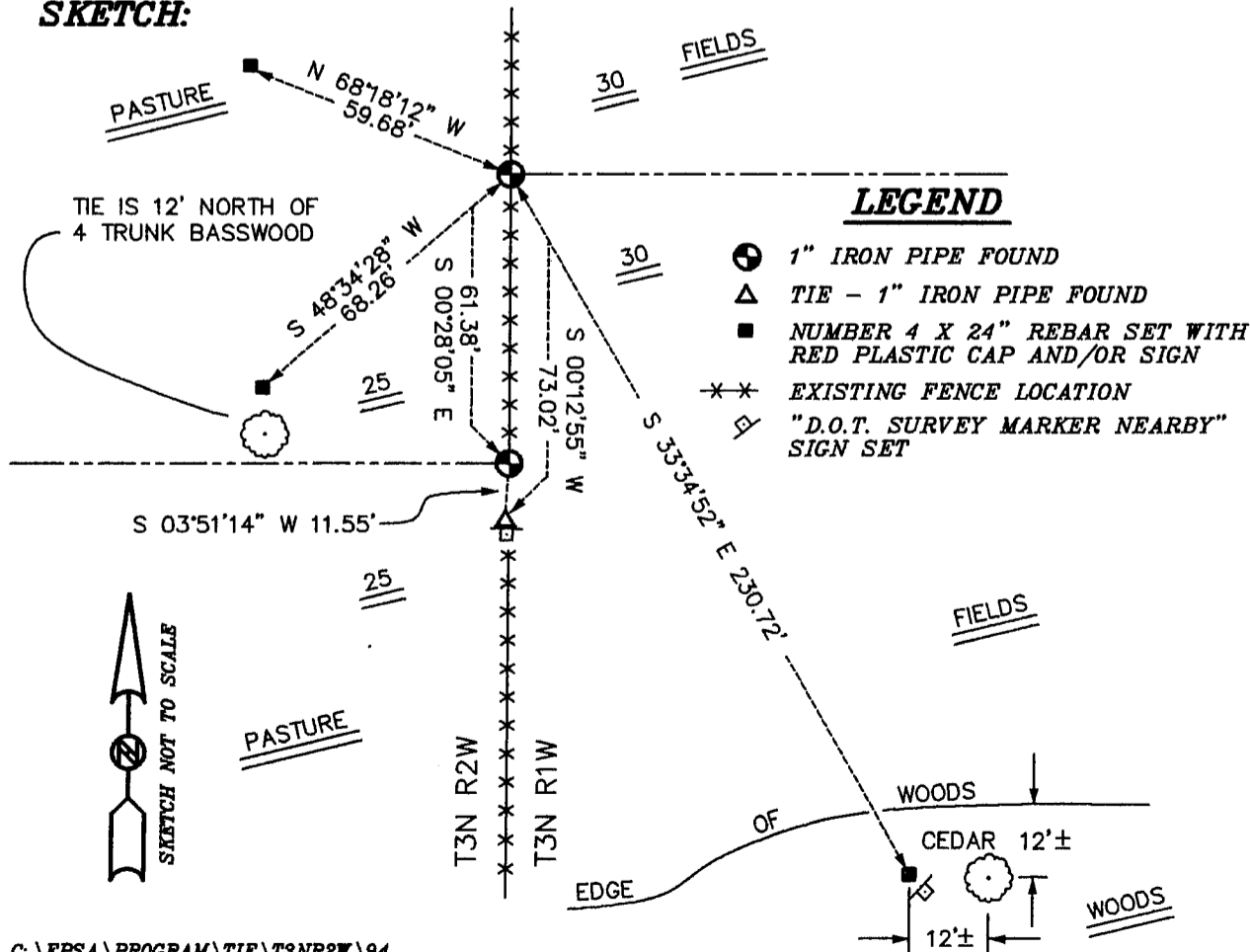
CORNER WAS NEVER ORIGINALLY SET. I SET THE CORNER IN 1992 AT THE PROPORTIONED OFFSET ON THE EAST LINE OF THE NORTHEAST 1/4 OF SECTION 25, T3N R2W.

DESCRIPTION OF CORNER EVIDENCE FOUND:

I FOUND THE EXISTING 1" IRON PIPE AND ACCEPTED THIS LOCATION AFTER AN E.D.M. TRAVERSE OF THE AREA.

**DESCRIPTION OF CORNER AND WITNESS MONUMENTS, REFERENCES AND ACCESSORIES USED TO PERPETUATE THE ORIGINAL OR RE-ESTABLISHED LOCATION OF THIS CORNER:
WITNESS TO THE CORNER LOCATION: BOBBY SEDGWICK ; SHELBY BLINDERT**

SKETCH:



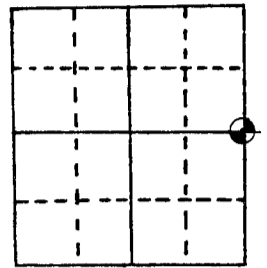
U.S. PUBLIC LAND SURVEY MONUMENT RECORD

Note: This form is intended and designed to fulfill all requirements of Wisconsin Administrative Code, Chapter A-E 5.02, U.S. Public Land Survey Monument Record (3) (a) (b) (c) (d) (e) (f) (g) (h) (i). An additional sheet may be added if necessary to conform with said requirements.

(a) Corner location: Township 3 North
 Range 2 ~~East~~ West

Town/City/Village HARRISON

County GRANT



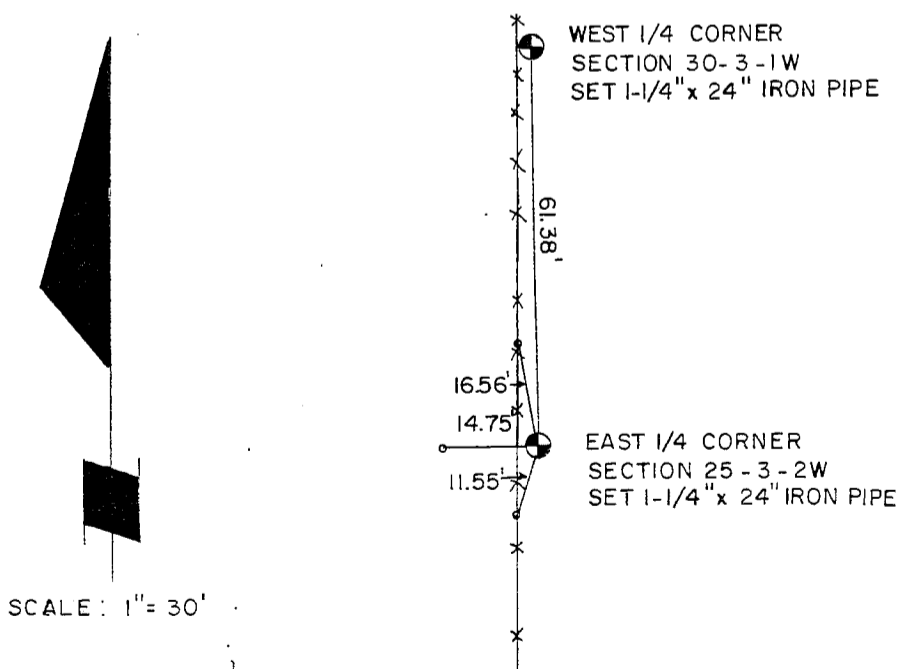
Section 25

(b) (f) (g) (h) Description of monument found at this corner and if it was accepted, state all evidence (material, testimonial, occupational, plats, records, other monuments) used as a basis for accepting. If not accepted or if nothing was found, state evidence used as basis for establishing location. If reestablished through lost corner proportionate methods, indicate all monuments, distances and directions used to establish.

Found two stones buried 12" below surface with a iron angle post set between them at the West 1/4 corner of Section 30, Town 3 North, Range 1 West, Town of Platteville. Also found stone at the West 1/8 corner of the SW 1/4 of Section 30. Set the East 1/4 corner of Section 25, Town 3 North, Range 2 West, Town of Harrison, at a point 61.38 feet South of the West 1/4 corner of Section 30-3-2W.

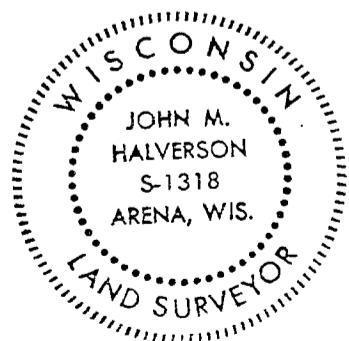
Located an existing old set post at the Southwest corner of Section 30. The distance from the West 1/4 corner to the stone at the West 1/8 corner of Section 30 is 1326.22 feet and the distance from the West 1/4 corner of Section 30 to the Southwest corner of Section 30 as occupied is 2650.59 feet.

(c) (d) (e) Plan view of corner with ties to at least 4 witness monuments. If in disagreement with previously established corner, show the distances between the two corners and also indicate the ties to the disputed corner.



SCALE: 1" = 30'

LEGEND
 ○ SET 1-1/4" IRON PIPE



(i) I, John M. HALVERSON
 (type or print name) certify that the corner location on this record was determined by me or under my direction and control and that this U.S. Public Land Survey Monument Record is correct and complete to the best of my knowledge and belief.

Affix seal here

John M. Halverson Signature June 20, 1984 Date

0109