

GRANT COUNTY CERTIFIED LAND CORNER

CORNER NUMBER 93

CERTIFICATE:

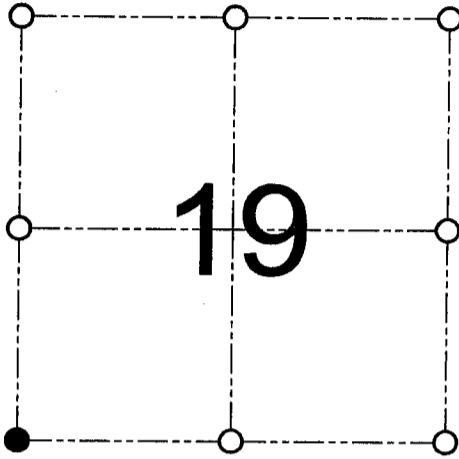
I, Larry L. Austin, do hereby certify that on the 6th day of September, 2000, I found evidence of the Southwest corner of Section 19, Town 3 North, Range 1 West, of the 4th Principal Meridian, and I re-established said corner according to the Wisconsin statutes as shown and described hereon.

Dated this 8th day of November, 2000

Larry L. Austin
Larry L. Austin S-1903



SEAL



● = CORNER LOCATION

SOUTHWEST CORNER OF
SECTION 19, T 3 N R 1 W
TOWN OF PLATTEVILLE

HISTORY OF ORIGINAL CORNER ESTABLISHMENT:

Corner was originally set in 1833 by Clark. In 1851 Everett tied to the corner. In 1877 Barber tied to the corner. In 1993 I set a 1" iron bar.

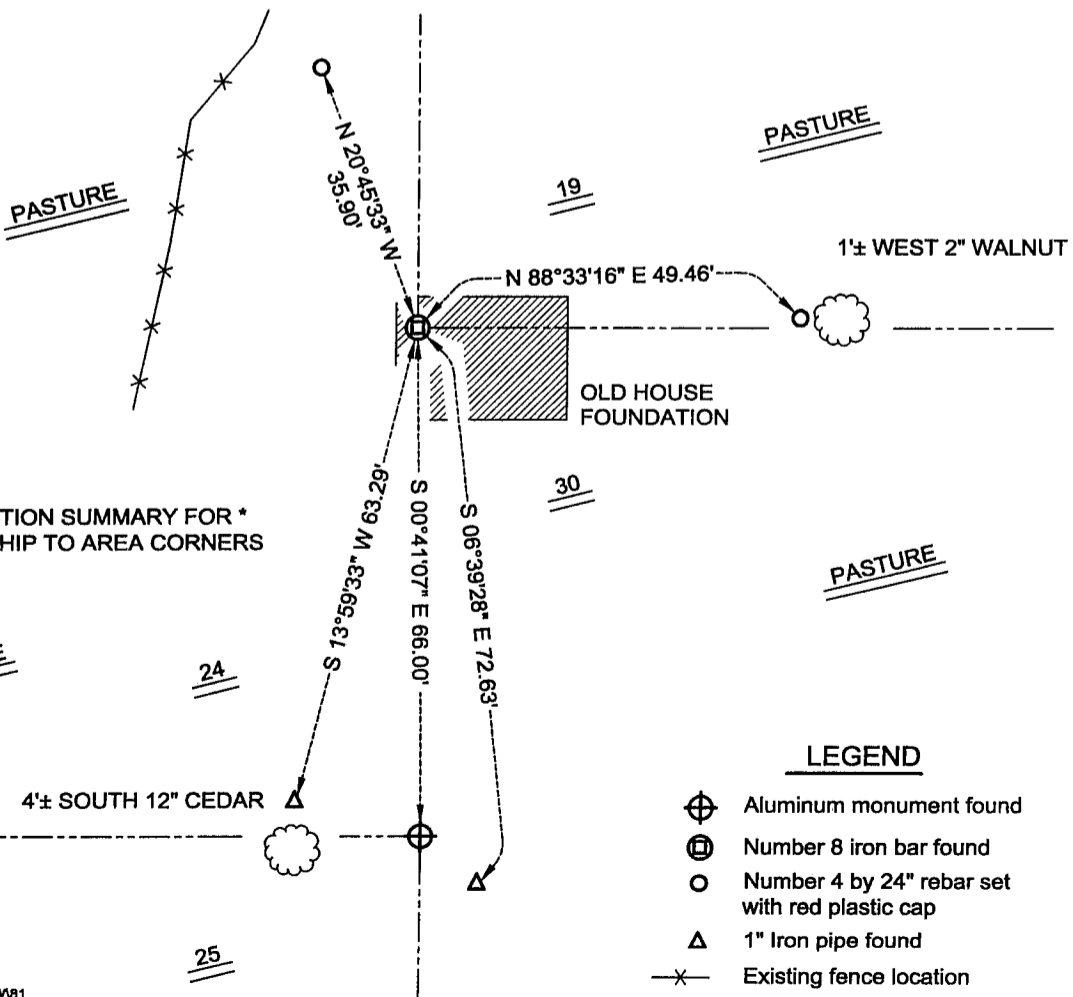
DESCRIPTION OF CORNER EVIDENCE FOUND:

I found the 1" iron bar and accepted it's location after an EDM & GPS traverse of the area.

DESCRIPTION OF CORNER AND WITNESS MONUMENTS, references and accessories used to perpetuate the original or re-established location of this corner

WITNESS TO THE CORNER LOCATION: SHANE AUSTIN & SHELBY BLINDERT & BOBBY SEDGWICK

SKETCH:



* SEE SECTION SUMMARY FOR *
RELATIONSHIP TO AREA CORNERS

LEGEND

- ⊕ Aluminum monument found
- ⊙ Number 8 iron bar found
- Number 4 by 24" rebar set with red plastic cap
- △ 1" Iron pipe found
- x- Existing fence location

GRANT COUNTY CERTIFIED LAND CORNER

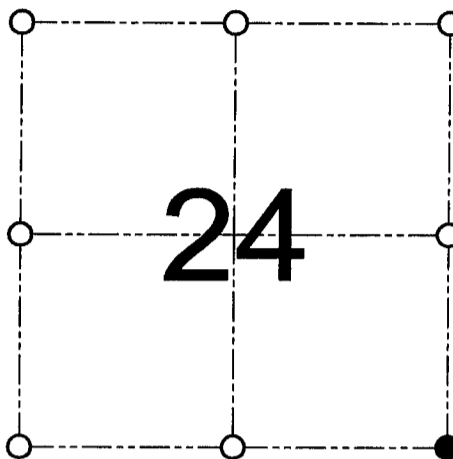
CORNER NUMBER 81

CERTIFICATE:

I, Larry L. Austin, do hereby certify that on the 6th day of September, 2000, I found evidence of the Southeast corner of Section 24, Town 3 North, Range 2 West, of the 4th Principal Meridian, and I re-established said corner according to the Wisconsin statutes as shown and described hereon.

Dated this 8th day of November, 2000

Larry L. Austin
Larry L. Austin S-1903



● = CORNER LOCATION

SOUTHEAST CORNER OF SECTION 24, T 3 N R 2 W TOWN OF HARRISON

HISTORY OF ORIGINAL CORNER ESTABLISHMENT:

Corner was originally set in 1832 by Lucius Lyon.
In 1987 John Halverson tied to the corner and set a 1 1/4" iron pipe.
In 1993 I set an Aluminum monument at this location.

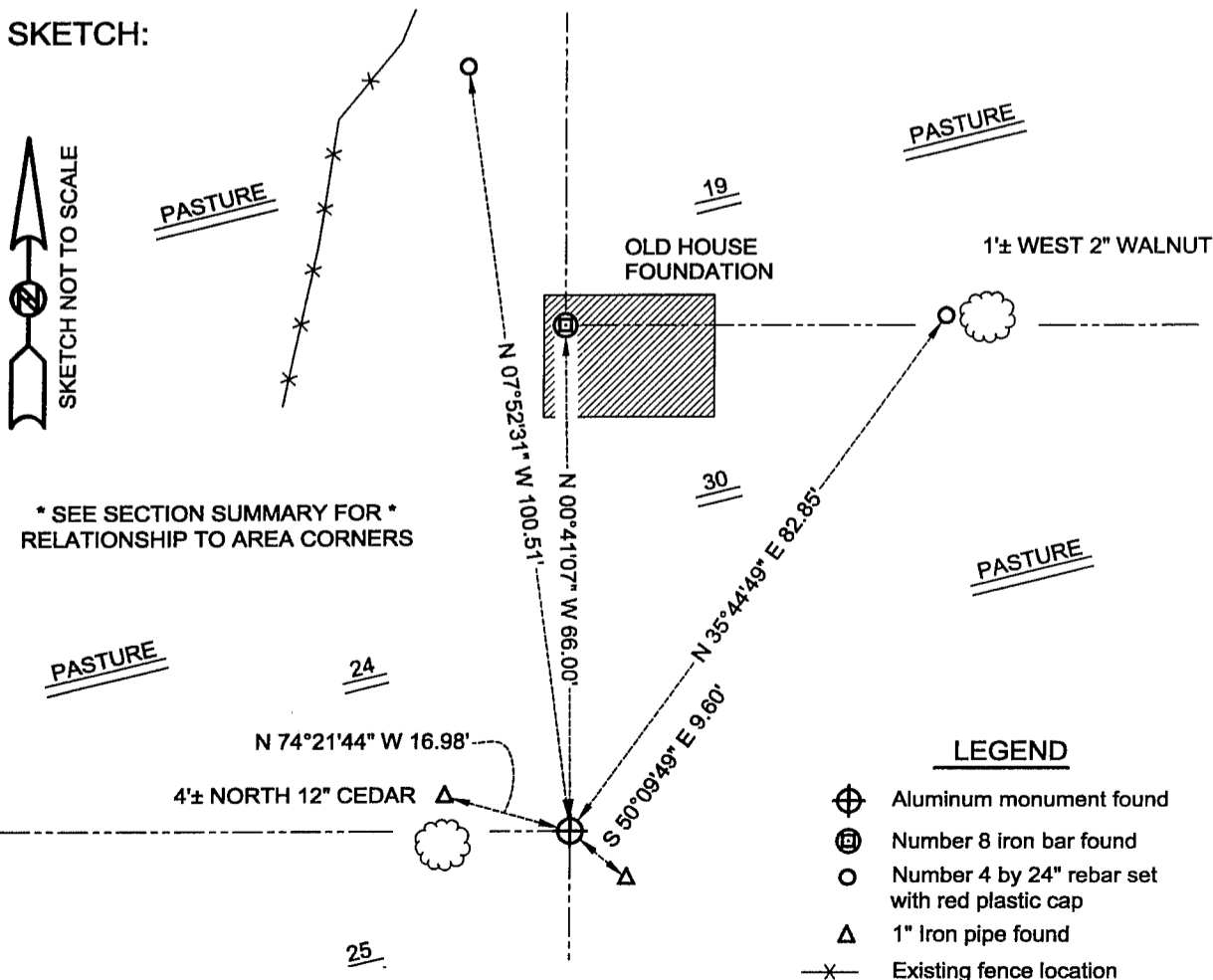
DESCRIPTION OF CORNER EVIDENCE FOUND:

I found the existing Aluminum monument and accepted it's location after an EDM & GPS traverse of the area.

DESCRIPTION OF CORNER AND WITNESS MONUMENTS, references and accessories used to perpetuate the original or re-established location of this corner

WITNESS TO THE CORNER LOCATION: SHANE AUSTIN & SHELBY BLINDERT & BOBBY SEDGWICK

SKETCH:



* SEE SECTION SUMMARY FOR *
RELATIONSHIP TO AREA CORNERS

LEGEND

- ⊕ Aluminum monument found
- ⊗ Number 8 iron bar found
- Number 4 by 24" rebar set with red plastic cap
- △ 1" Iron pipe found
- x— Existing fence location