

# GRANT COUNTY CERTIFIED LAND CORNER

CORNER NUMBER 79

**CERTIFICATE:**

I, Larry L. Austin, do hereby certify that on the 6th day of August, 2000, I found evidence of the West 1/4 corner of Section 24, Town 3 North, Range 2 West, of the 4th Principal Meridian, and I re-established said corner according to the Wisconsin statutes as shown and described hereon.

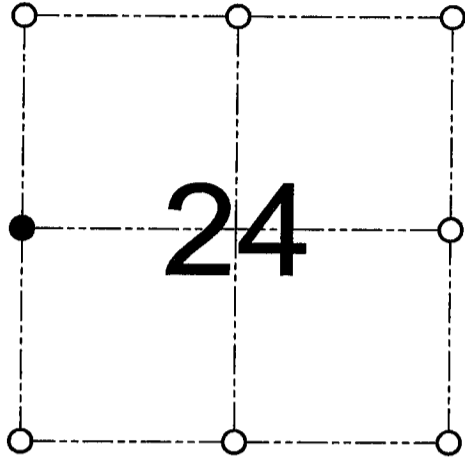
Dated this 8th day of November, 2000

*Larry L. Austin*  
 Larry L. Austin S-1903  
 Grant County Coop.



N. 476441.5  
 E 858478.2

SEAL



● = CORNER LOCATION  
 WEST 1/4 CORNER OF  
 SECTION 24, T 3 N R 2 W  
 TOWN OF HARRISON

**HISTORY OF ORIGINAL CORNER ESTABLISHMENT:**

Corner was originally set in 1833 by Clark.  
 In 1873 McFall found the original corner.

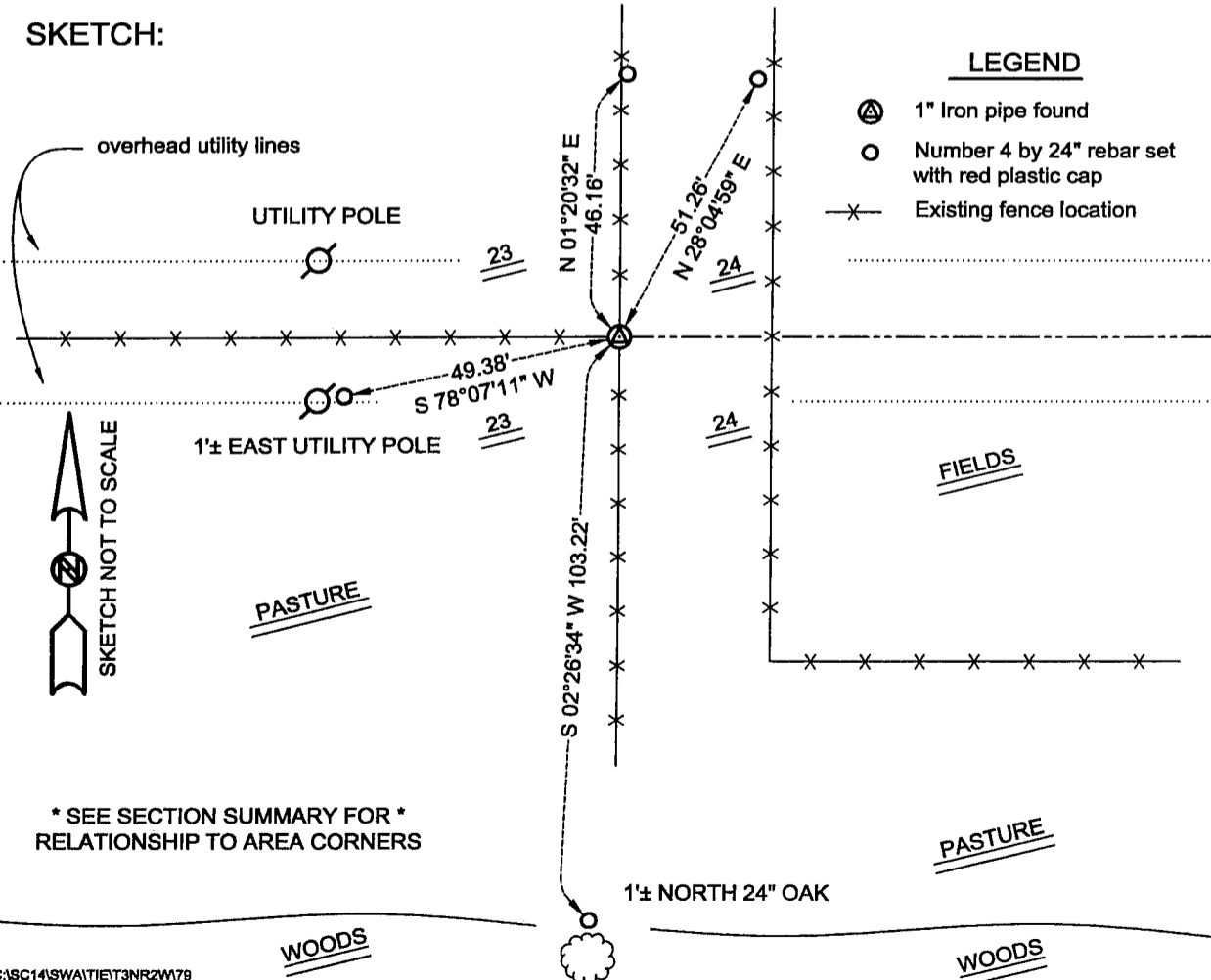
**DESCRIPTION OF CORNER EVIDENCE FOUND:**

I found an existing 1" iron pipe at this location. I accepted it's location after an EDM & GPS traverse of the area.

**DESCRIPTION OF CORNER AND WITNESS MONUMENTS, references and accessories used to perpetuate the original or re-established location of this corner**

WITNESS TO THE CORNER LOCATION: SHANE AUSTIN & SHELBY BLINDERT & BOBBY SEDGWICK

**SKETCH:**



LEGEND

- Ⓐ 1" Iron pipe found
- Number 4 by 24" rebar set with red plastic cap
- ✕ Existing fence location

\* SEE SECTION SUMMARY FOR \*  
 RELATIONSHIP TO AREA CORNERS