

# U. S. PUBLIC LAND SURVEY MONUMENT RECORD

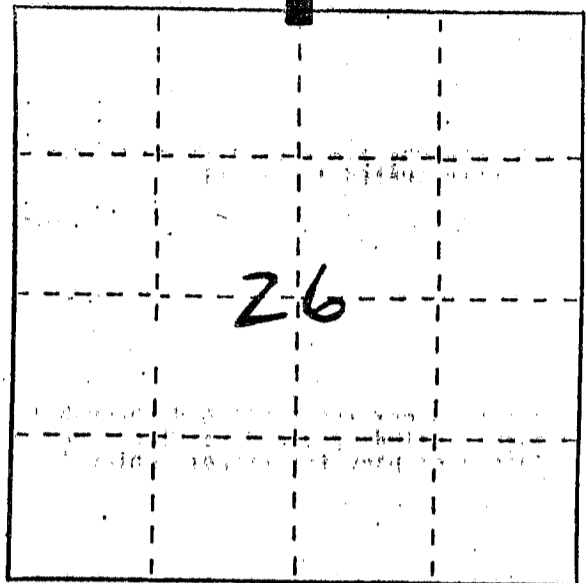
**INSTRUCTIONS :**

This record shall show the location of the corner and shall include all of the following nine elements (a through i).

- (a) Identify the corner by reference to the U.S. public land survey system.

■ = Corner monument restored.

*N 1/4 COR SEC 26, T3N, R2W  
OF THE 4TH PM., GRANT CO.,  
WISCONSIN*



*T3N, R2W*

*MAR 10 1993*

- (b) Describe any record evidence, monument evidence, occupational evidence, testimonial evidence or any other material evidence you considered, and whether the monument was found or placed.

*MONUMENT WAS PLACED BASED ON OCCUPIED  
LINES & VERIFIED BY EDM TRAVERSE OF THE  
AREA.*

- (c) In the plan view drawing below, provide reference ties to at least 4 witness monuments, or, if the location is within a municipality, to at least 2 witness monuments. (Witness monuments shall be made of concrete, natural stone, iron or other equally durable material.) Describe witness monuments.

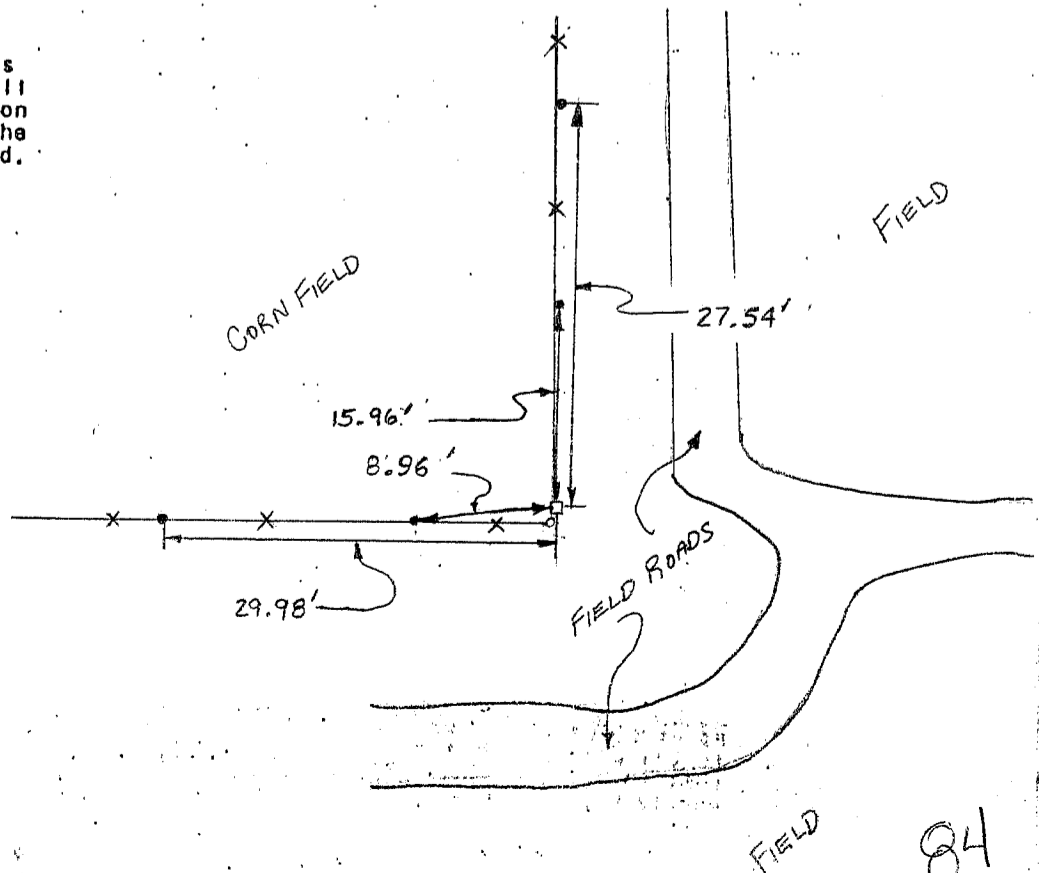
- (d) Show a plan view drawing depicting the relevant monuments and reference ties which is sufficient in detail to enable accurate relocation of the corner monument if the corner monument is disturbed. Indicate north.



NO SCALE

LEGEND

- 3/4" x 24" SMOOTH BAR
- 3/8" x 12" PEGS
- CORNER POST OF FENCE
- x EXISTING FENCELINE



(e) Describe any material discrepancy between the location of the corner as restored or reestablished and the location of that corner as previously restored or reestablished by distance and direction. Show the discrepancy on the plan view drawing under (d) above. Show the distances between the corner as previously restored or reestablished and (1) the corner as restored or reestablished, and (2) to at least 2 of the witness monuments shown on the drawing in (d), above.

No.

(f) Was the corner restored through acceptance of (1) an obliterated evidence location, or, (2) a found perpetuated location?

(2) FOUND PERPETUATED LOCATION

(g&h) Was the corner reestablished through lost corner proportionate methods? If so, show the method, including the directions and distances to other public land survey corners used as evidence or used for proportioning in determining the corner location?

No.

Affix Land Surveyor Seal

(i) I, LARRY L. AUSTIN  
(type or print name) certify that the corner location shown on this record was determined by me or under my direction and control and that this U.S. Public Land Survey Monument Record is correct and complete to the best of my knowledge and belief.

Larry L. Austin

5-19-72

**Grant County**  
**Real Property Lister's Office**

111 South Jefferson Street, P.O. Box 529  
Lancaster, WI 53813

July 30, 1999

Stan King  
Blackhawk Engineering LTD.  
2 Insight Drive  
Platteville, WI 53818

Dear Stan:

We received two tie sheets from you a couple of days ago. One for the NW corner and one for the N1/4 corner of Section 26 T3N R2W. We have an existing tie sheet, which was received from Larry Austin in 1992 for the N ¼ corner of Section 26 T 3 N R 2 W. It appears that there may be two monuments for that corner. To avoid problems in the future I thought I would inform you of this. Enclosed are copies of the tie sheets from you and Larry.

For your information, I have enclosed a copy of the Wisconsin Administrative Code A-E 7.08, which deals with public land survey monument records.

If you have any questions give me a call at 608-723-2666.

Sincerely,

John Anderson

cc: Larry Austin, Grant County Surveyor

# CERTIFIED LAND CORNER

( STATE OF WISCONSIN ) S.S.  
 ( COUNTY OF GRANT )

## CERTIFICATE

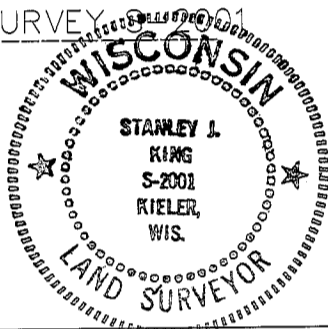
I, Stanley King, do hereby certify that on the 10 TH day of MAY 1999, I found (evidence) (no evidence) of the N 1/4 corner of SECTION 26 T 3 N, R 2 W, Fourth Principal Meridian, and I re-established said corner according to the Wisconsin Statutes as shown and described hereon.

Dated this 26 TH day of JULY 1999

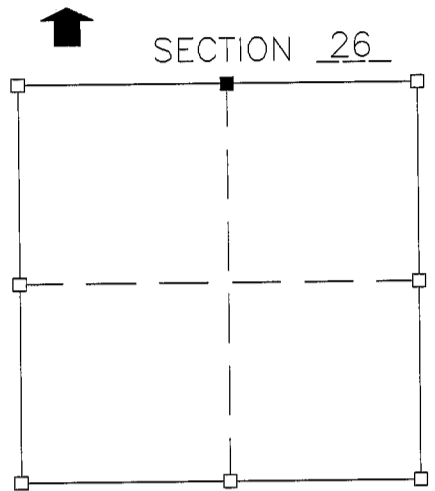
Stanley King

REGISTERED LAND SURVEYOR 8-2001

Title



Seal



■ = corner location  
 T 3 N R 2 W  
 Town of : HARRISON

History of original corner establishment:

Description of corner evidence found: No record found since original survey Set corner by proportioning the East-West location verified by EDM Traverse of the area

Description of corner and witness monuments, references and accessories used to perpetuate the original or re-established location of this corner:

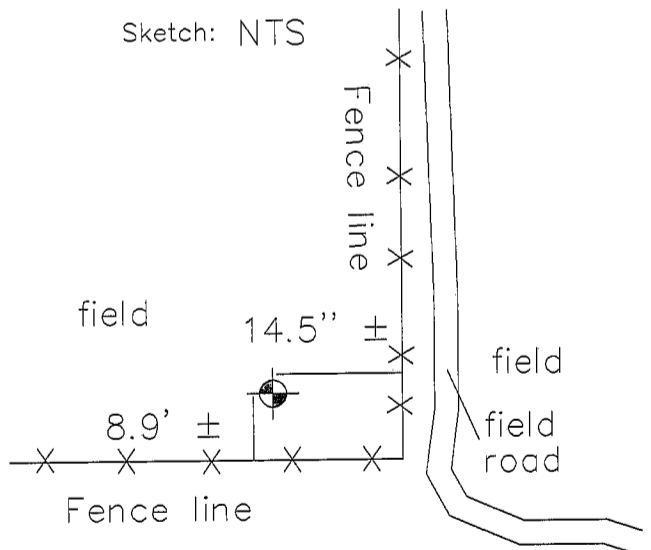
Witnesses to corner location:

BRAD J. HAZEN

MICHAEL M. MILLER

SET A 3/4" X 24"  
 SOLID ROUND IRON ROD AT THE CORNER  
 AND 18" DEPTH

Sketch: NTS



### SURVEY CONTROL ORDER

Horizontal				
Vertical				
Corner	East (X)	North (Y)	Elevation (Z)	Zone
Control sta. Name				