

# GRANT COUNTY

## Survey Monument Record

TYPE OF MONUMENT RAILROAD SPIKE FND.

STATE PLANE COORDINATES: N \_\_\_\_\_  
E \_\_\_\_\_

ELEVATION - M.S.L. DATUM: \_\_\_\_\_

THETA ANGLE: \_\_\_\_\_

FIELD BOOK: 96-05

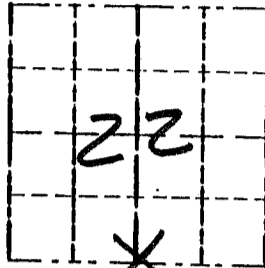
PAGE: 22

CORNER NO. 86

SECTION 22

TOWN 3N

RANGE 2W



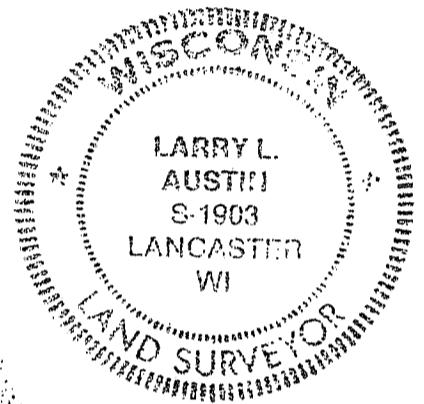
LOCATION  
(Indicated by "X")



### BASIS FOR MONUMENT LOCATION

(Use reverse side if necessary)

CORNER SET IN 1833 BY ROBERT CLARK... IN 1898 SEAL: CHARLES SAMPSON LOCATED THE BEARING TREES NO MONUMENT PLACED. IN 1989 I SET A RAILROAD SPIKE BASED UPON OCCUPIED EVIDENCE; IN 1994 LARRY SCHMIT FOUND AN ACCEPTED THE RAILROAD SPIKE. I ACCEPTED THE RAILROAD SPIKE AFTER VERIFYING ITS LOCATION USING EDM METHODS.



CERTIFIED CORRECT

Registered Land Surveyor

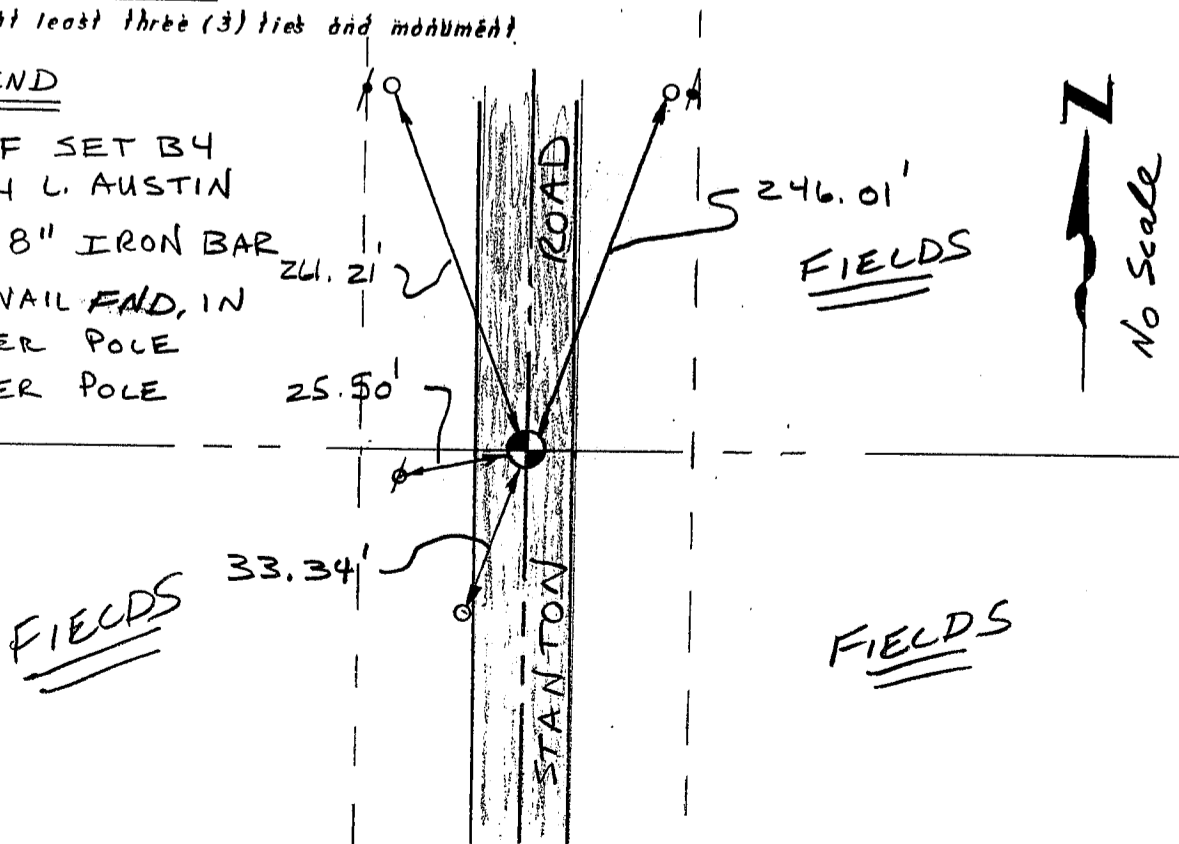
DATE: 2/21/96

### TIE SKETCH

Show at least three (3) ties and monument

#### LEGEND

- ⊕ RRSF SET BY LARRY L. AUSTIN
- 1/2" x 18" IRON BAR
- ⊙ P.K. NAIL FND, IN POWER POLE
- ⊙ POWER POLE



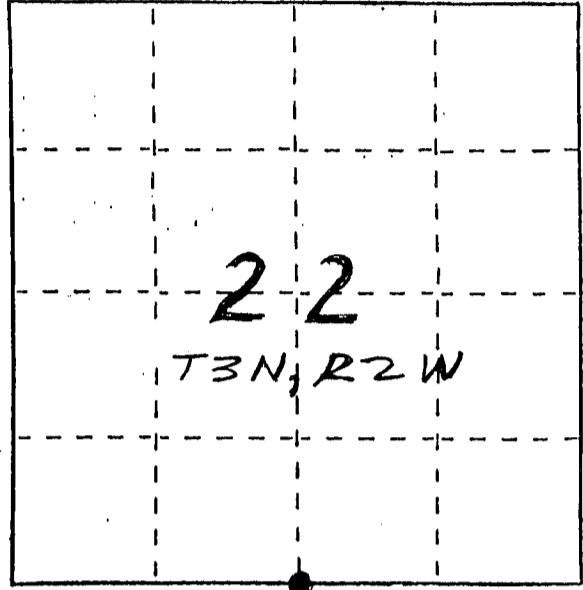
Harrison

# U. S. PUBLIC LAND SURVEY MONUMENT RECORD

INSTRUCTIONS: This record shall show the location of the corner and shall include all of the following nine elements (a through i).

- (a) Identify the corner by reference to the U.S. public land survey system.
- = Corner monument restored.

SOUTH 1/4 CORNER OF  
SECTION 22, T3N, R2W  
HARRISON TWP., GRANT  
CO., WISCONSIN



- (b) Describe any record evidence, monument evidence, occupational evidence, testimonial evidence or any other material evidence you considered, and whether the monument was found or placed.  
MONUMENT WAS PLACED BASED UPON OCCUPIED EVIDENCE;  
NO OTHER EVIDENCE SINCE ORIGINAL SURVEYS.

- (c) In the plan view drawing below, provide reference ties to at least 4 witness monuments, or, if the location is within a municipality, to at least 2 witness monuments. (Witness monuments shall be made of concrete, natural stone, iron or other equally durable material.)  
Describe witness monuments.

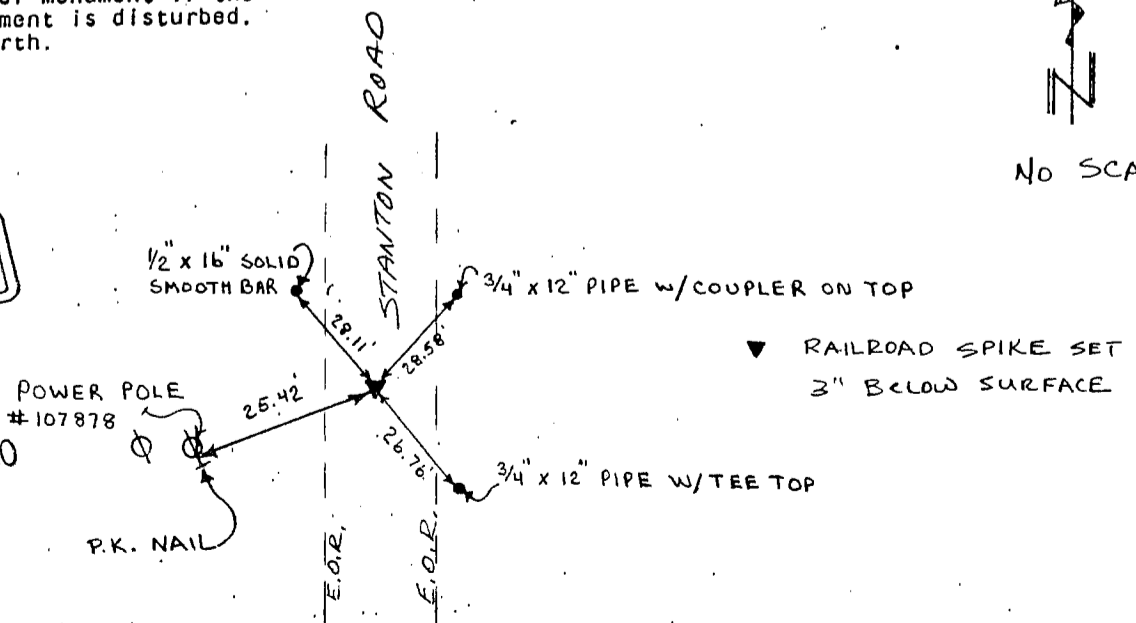
- (d) Show a plan-view drawing depicting the relevant monuments and reference ties which is sufficient in detail to enable accurate relocation of the corner monument if the corner monument is disturbed. Indicate north.



NO SCALE

GRANT COUNTY CLERK  
**RECEIVED**

SEP 20 1990



(e) Describe any material discrepancy between the location of the corner as restored or reestablished and the location of that corner as previously restored or reestablished by distance and direction. Show the discrepancy on the plan view drawing under (d), above. Show the distances between the corner as previously restored or reestablished and (1) the corner as restored or reestablished, and (2) to at least 2 of the witness monuments shown on the drawing in (d), above.

NONE

(f) Was the corner restored through acceptance of (1) an obliterated evidence location, or, (2) a found perpetuated location?

(2) FOUND PERPETUATED LOCATION.

(g&h) Was the corner reestablished through lost corner proportionate methods? If so, show the method, including the directions and distances to other public land survey corners used as evidence or used for proportioning in determining the corner location?

N.A.

(i) I, LARRY L. AUSTIN  
(type or print name) certify that the corner location shown on this record was determined by me or under my direction and control and that this U.S. Public Land Survey Monument Record is correct and complete to the best of my knowledge and belief.

Signature

Date

