

CERTIFIED LAND CORNER

(STATE OF WISCONSIN)
 (COUNTY OF GRANT) S.S.

CERTIFICATE

I, Stanley King, do hereby certify that on the 10TH day of MAY 1999, I found (evidence) (no evidence) of the NW corner of SECTION 26 T 3 N, R 2 W, Fourth Principal Meridian, and I re-established said corner according to the Wisconsin Statutes as shown and described hereon.

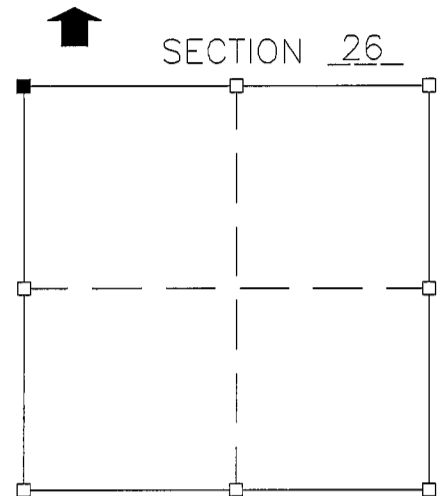
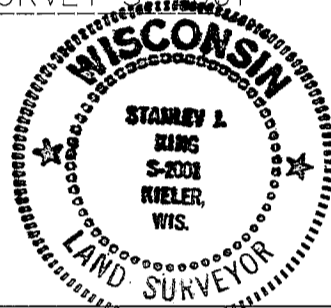
Dated this 26TH day of JULY 1999

Stanley King

REGISTERED LAND SURVEY S-2001

Title

Seal



■ = corner location
 T 3 N R 2 W
 Town of : HARRISON

History of original corner establishment:

Description of corner evidence found: No record found since original survey Set corner by proportioning the North-South location verified by EDM Traverse of the area

Description of corner and witness monuments, references and accessories used to perpetuate the original or re-established location of this corner:

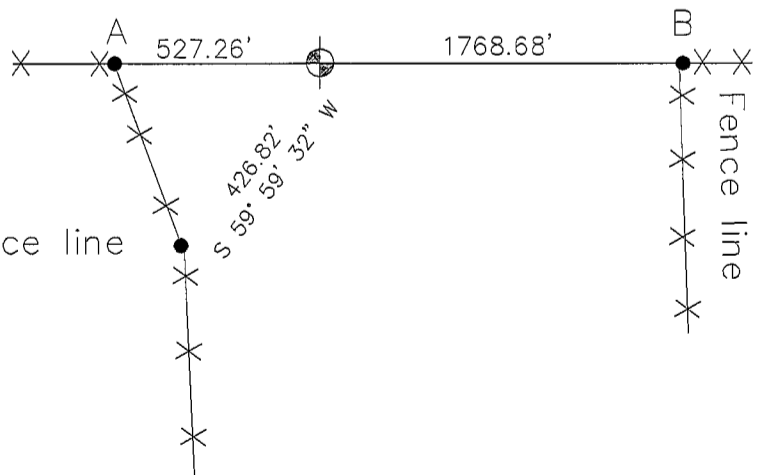
Witnesses to corner location:

BRAD J. HAZEN

MICHAEL M. MILLER

Sketch: NTS

Fence line to be removed by the farmer from point A to B



SET A 3/4" X 24" SOLID ROUND IRON ROD AT THE CORNER AND 18" DEPTH

SURVEY CONTROL ORDER

Horizontal

Vertical

Corner	East (X)	North (Y)	Elevation (Z)	Zone
Control sta. Name				