

GRANT COUNTY

Survey Monument Record

TYPE OF MONUMENT 3/4" X 24" IRON BAR SET

STATE PLANE COORDINATES: N _____
E _____

ELEVATION — M.S.L. DATUM: _____

THETA ANGLE: _____

FIELD BOOK: 96-05

PAGE: 22

CORNER NO. 87

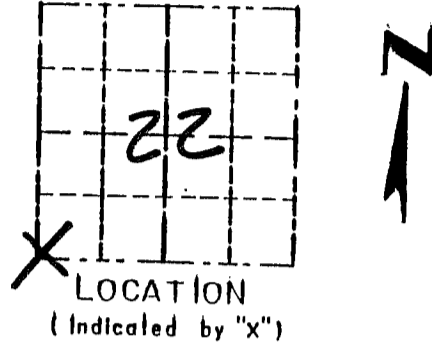
SECTION 22

TOWN 32

RANGE 2W

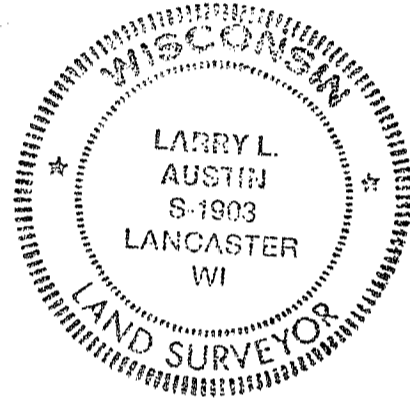
BASIS FOR MONUMENT LOCATION

(Use reverse side if necessary)



CORNER SET IN 1833 BY ROBERT CLARK. IN 1898 CHARLES SAMPSON SET A ROCK AT THIS LOCATION. I WAS UNABLE TO LOCATE THE ROCK. I USED THE DISTANCES OFF THE PLAT TO RESET THE CORNER. VERIFIED ITS LOCATION USING EDM METHODS.

SEAL:



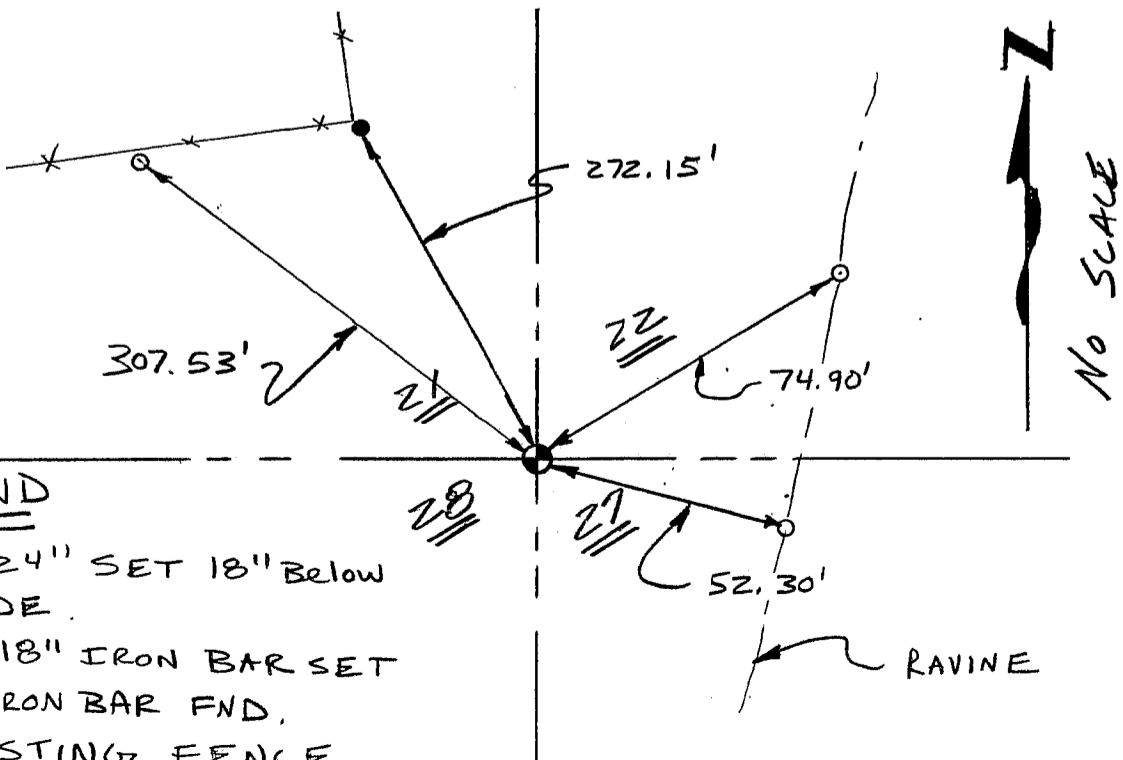
CERTIFIED CORRECT

Larry L. Austin
Registered Land Surveyor

DATE: 8/21/96

TIE SKETCH

Show at least three (3) ties and monument



LEGEND

- ⊙ 3/4" X 24" SET 18" BELOW GRADE
- 1/2" X 18" IRON BAR SET
- 3/4" IRON BAR FND.
- XX EXISTING FENCE