

RECEIVED MAR 26 1999

# GRANT COUNTY CERTIFIED LAND CORNER

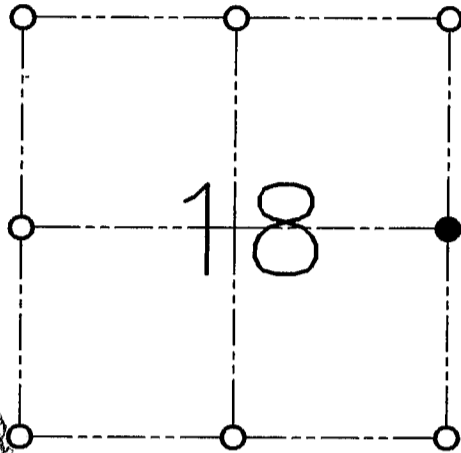
CORNER NO. 55

**CERTIFICATE:**

I, LARRY L. AUSTIN, DO HEREBY CERTIFY THAT ON FIFTEENTH DAY OF SEPTEMBER, 1998, I FOUND OCCUPATIONAL EVIDENCE OF THE EAST 1/4 OF SECTION 18, TOWN 3 NORTH, RANGE 2 WEST, OF THE FOURTH PRINCIPAL MERIDIAN, AND I RE-ESTABLISHED SAID CORNER ACCORDING TO THE WISCONSIN STATUTES AS SHOWN AND DESCRIBED HEREON.

DATED THIS FIFTEENTH DAY OF OCTOBER, 1998

*Larry L. Austin*  
LARRY L. AUSTIN S-1903



● = CORNER LOCATION

**EAST 1/4 OF SECTION 18  
T 3 N R 2 W  
TOWN OF HARRISON**



**HISTORY OF ORIGINAL CORNER ESTABLISHMENT:**

CORNER SET IN 1833 BY ROBERT CLARK.

**DESCRIPTION OF CORNER EVIDENCE FOUND:**

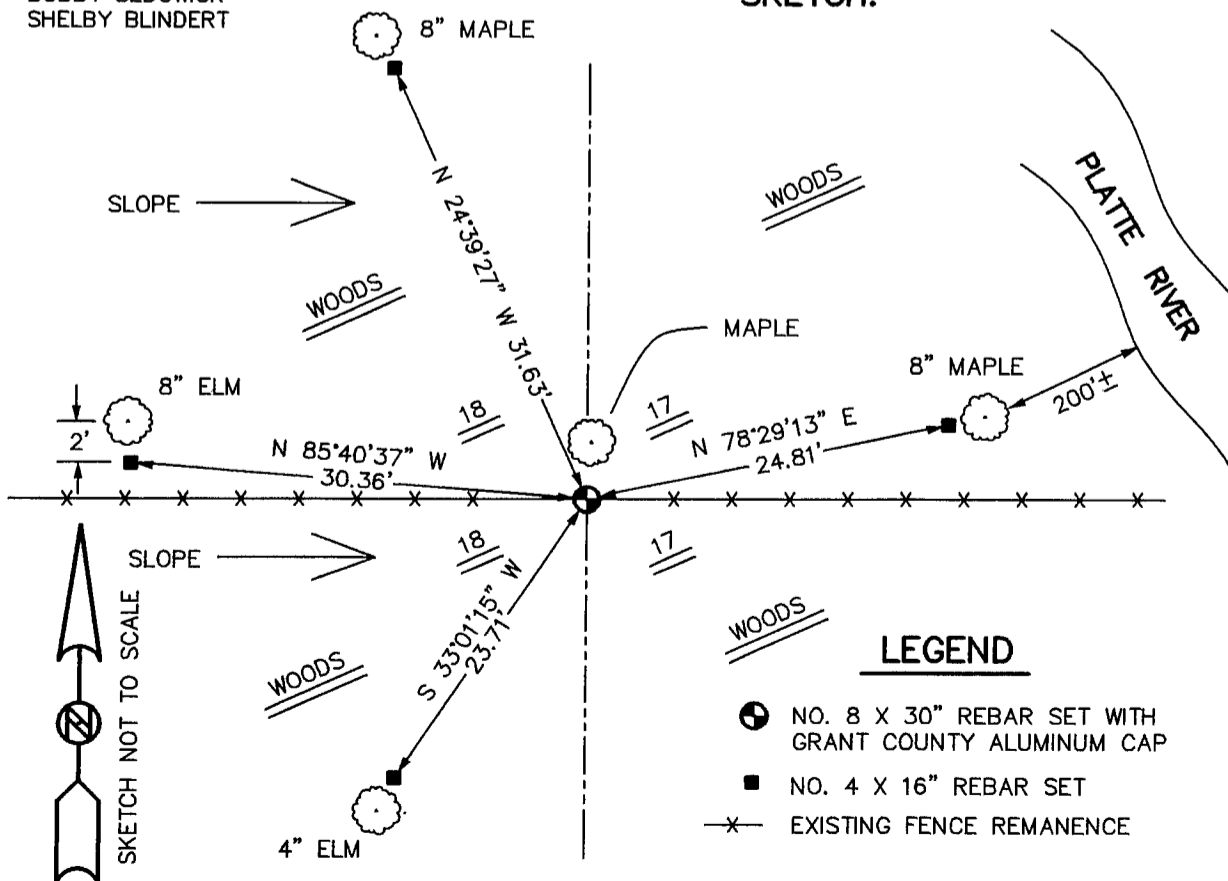
I RESET THE CORNER IN AN EAST-WEST FENCE FOR NORTHING. THE EASTING WAS SET BY PROJECTING OCCUPATIONAL EVIDENCE FROM THE SOUTH. VERIFIED THIS LOCATION USING E.D.M. AND G.P.S. METHODS.

**DESCRIPTION OF CORNER AND WITNESS MONUMENTS, REFERENCES AND ACCESSORIES USED TO PERPETUATE THE ORIGINAL OR RE-ESTABLISHED LOCATION OF THIS CORNER:**

**WITNESS TO THE CORNER LOCATION:**

BOBBY SEDGWICK  
SHELBY BLINDERT

**SKETCH:**



**LEGEND**

- NO. 8 X 30" REBAR SET WITH GRANT COUNTY ALUMINUM CAP
- NO. 4 X 16" REBAR SET
- x— EXISTING FENCE REMANENCE