

# GRANT COUNTY CERTIFIED LAND CORNER

CORNER NUMBER 70

**CERTIFICATE:**

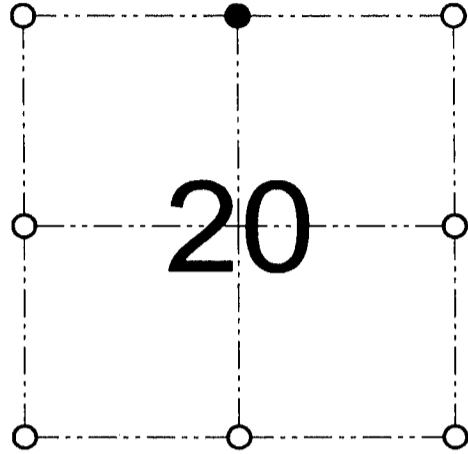
I, Larry L. Austin, do hereby certify that on the 4th day of January, 2001, I found no evidence of the North 1/4 corner of Section 20, Town 3 North, Range 2 West, of the 4th Principal Meridian, and I re-established said corner according to the Wisconsin statutes as shown and described hereon.

Dated this 16th day of February, 2001

*Larry L. Austin*  
Larry L. Austin S-1903



SEAL



● = CORNER LOCATION

NORTH 1/4 CORNER OF  
SECTION 20, T 3 N R 2 W  
TOWN OF HARRISON

**HISTORY OF ORIGINAL CORNER ESTABLISHMENT:**

Corner was originally set in 1832 by Robert Clark.  
No other record of the corner was found.

**DESCRIPTION OF CORNER EVIDENCE FOUND:**

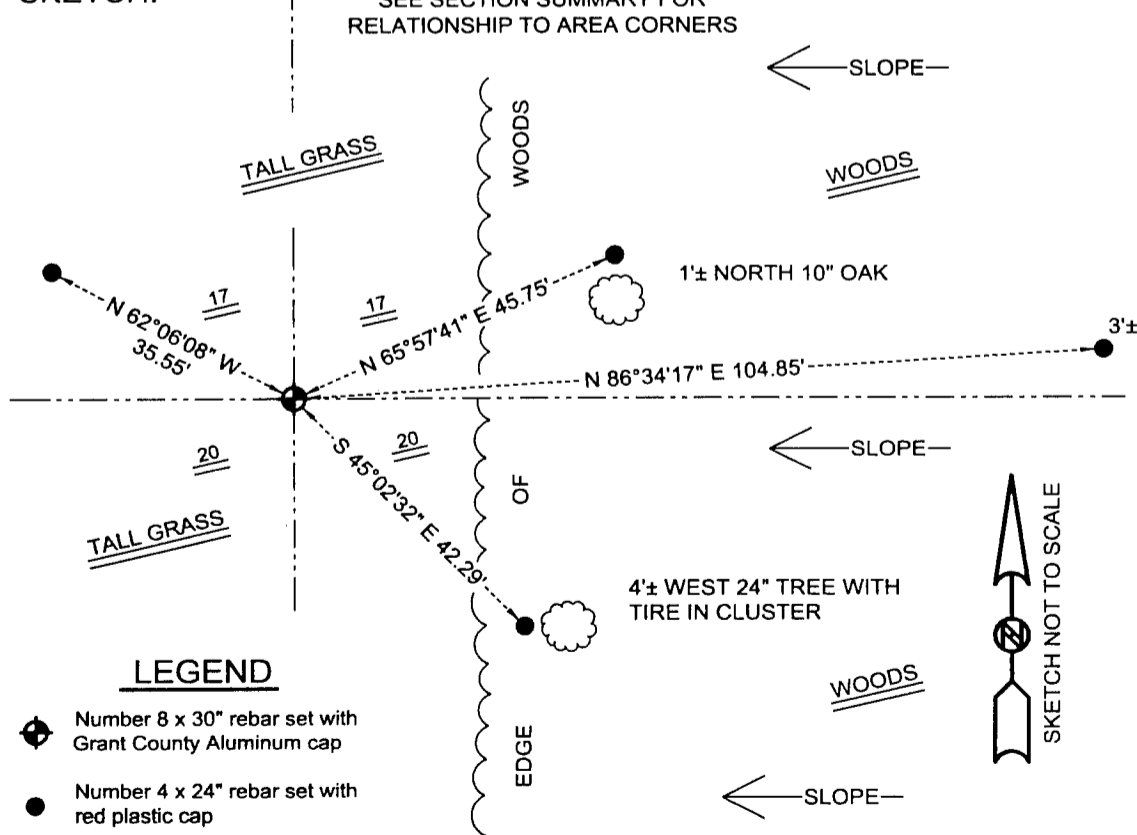
I found no evidence to the location of the corner. I reset the corner based on a straight line proportion between the Northwest and Northeast corners of Section 20. Verified it's location using EDM & GPS traverse of the area.

**DESCRIPTION OF CORNER AND WITNESS MONUMENTS, references and accessories used to perpetuate the original or re-established location of this corner**

WITNESS TO THE CORNER LOCATION: SHANE AUSTIN & TIM FAUVER & BOBBY SEDGWICK

**SKETCH:**

\* SEE SECTION SUMMARY FOR \*  
RELATIONSHIP TO AREA CORNERS



**LEGEND**

- Number 8 x 30" rebar set with Grant County Aluminum cap
- Number 4 x 24" rebar set with red plastic cap

**AUSTIN ENGINEERING, LLC**  
4211 HWY 81 E, LANCASTER, WI 53813  
PHONE 608-723-6363 FAX 608-723-6702

FIELDBOOK: SDR33, 2045  
G:\T3NR2W\18  
C:\SC14\SWA\TIE\T3NR2W\70

DRAWN BY: SW AUSTIN  
APPROVED: LL AUSTIN  
CREW: BS - SB - SA - TF

JUN 14 2001