

# GRANT COUNTY CERTIFIED LAND CORNER

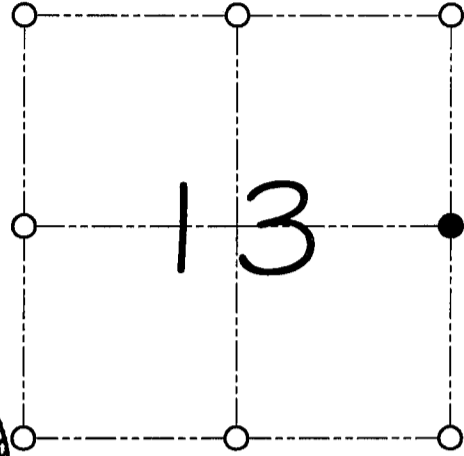
CORNER NUMBER 60

**CERTIFICATE:**

I, Larry L. Austin, do hereby certify that on the 16th day of March, 2000, I found evidence of the East 1/4 corner of Section 13, Town 3 North, Range 2 West, of the 4th Principal Meridian, and I re-established said corner according to the Wisconsin statutes as shown and described hereon.

Dated this 16th day of April, 2000

*Larry L. Austin*  
Larry L. Austin S-1903



● = CORNER LOCATION

EAST 1/4 CORNER OF SECTION 13, T 3 N R 2 W TOWN OF HARRISON

**HISTORY OF ORIGINAL CORNER ESTABLISHMENT:**

Corner was originally set in 1832 by Lucius Lyon.  
In 1898 Sampson found substantial evidence of the corner.

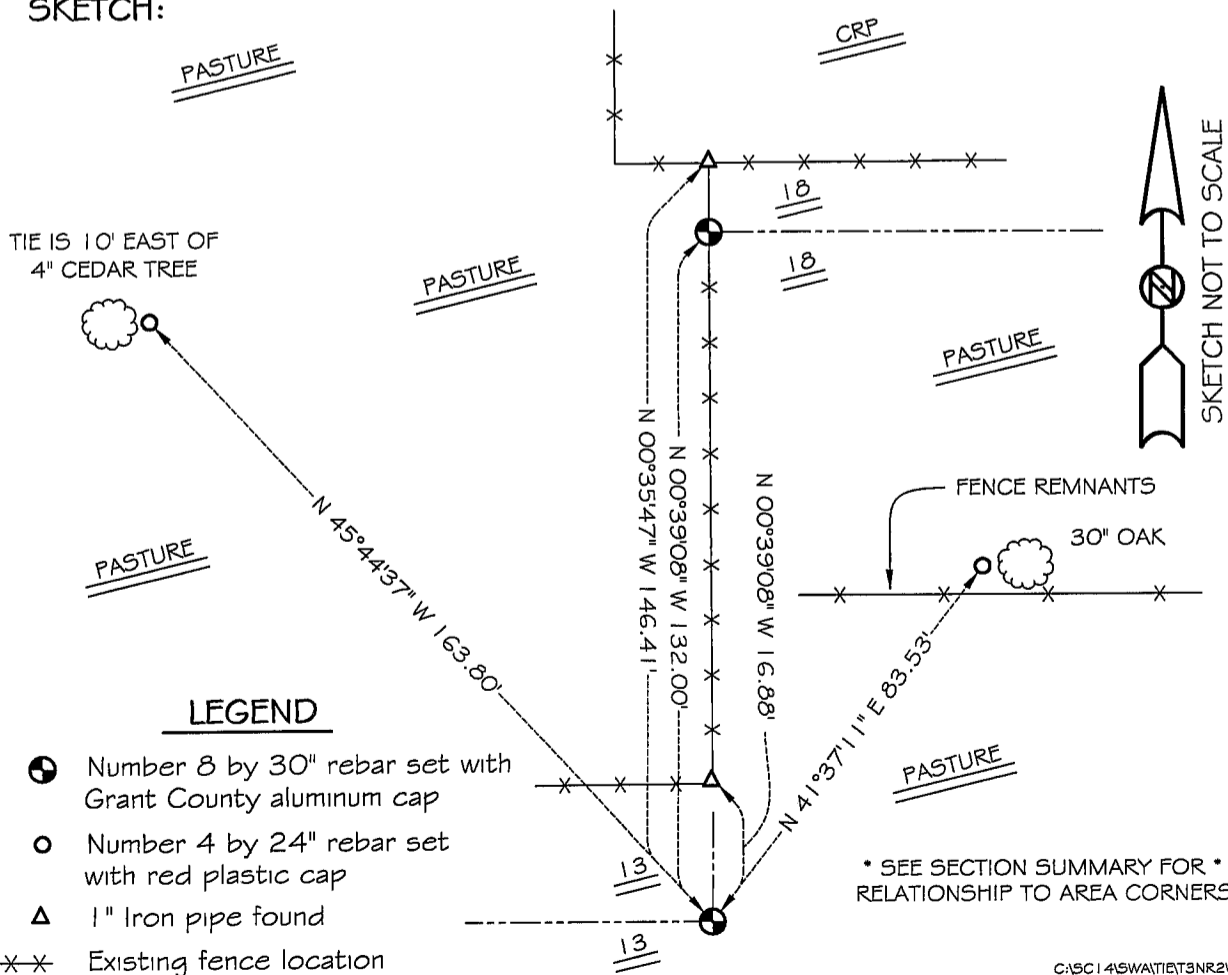
**DESCRIPTION OF CORNER EVIDENCE FOUND:**

I found an existing 1" iron pipe at this location and did not accept it's location. I reset the corner based on proportioned offset from the West 1/4 of Section 18. Verified this location using E.D.M. & G.P.S. methods.

**DESCRIPTION OF CORNER AND WITNESS MONUMENTS, references and accessories used to perpetuate the original or re-established location of this corner**

WITNESS TO THE CORNER LOCATION: BOBBY SEDGWICK & SHELBY BLINDERT

**SKETCH:**



**LEGEND**

- Number 8 by 30" rebar set with Grant County aluminum cap
- Number 4 by 24" rebar set with red plastic cap
- △ 1" Iron pipe found
- ×× Existing fence location

\* SEE SECTION SUMMARY FOR \*  
RELATIONSHIP TO AREA CORNERS

# GRANT COUNTY CERTIFIED LAND CORNER

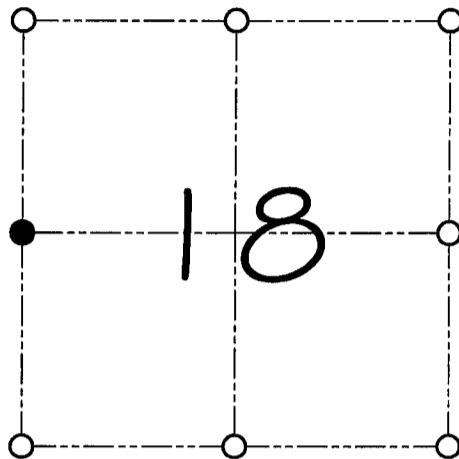
CORNER NUMBER 54

**CERTIFICATE:**

I, Larry L. Austin, do hereby certify that on the 16th day of March, 2000, I found no evidence of the West 1/4 corner of Section 18, Town 3 North, Range 1 West, of the 4th Principal Meridian, and I re-established said corner according to the Wisconsin statutes as shown and described hereon.

Dated this 16th day of April, 2000

*Larry L. Austin*  
Larry L. Austin S-1903



● = CORNER LOCATION

WEST 1/4 CORNER OF  
SECTION 18, T 3 N R 1 W  
TOWN OF PLATTEVILLE

**HISTORY OF ORIGINAL CORNER ESTABLISHMENT:**

Corner was never originally set.  
In 1854 Overton set the corner. (Unknown monument & ties)

**DESCRIPTION OF CORNER EVIDENCE FOUND:**

I found a 1" iron pipe and did not accept its location. I reset the corner based on evidence of the survey by Overton. Verified this location using E.D.M. & G.P.S. methods.

**DESCRIPTION OF CORNER AND WITNESS MONUMENTS, references and accessories used to perpetuate the original or re-established location of this corner**  
WITNESS TO THE CORNER LOCATION: BOBBY SEDGWICK & SHELBY BLINDERT

**SKETCH:**

