

GRANT COUNTY CERTIFIED LAND CORNER

CORNER NUMBER 62

CERTIFICATE:

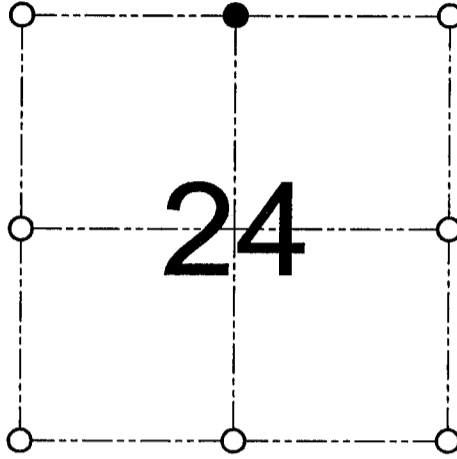
I, Larry L. Austin, do hereby certify that on the 12th day of August, 2000, I found evidence of the North 1/4 corner of Section 24, Town 3 North, Range 2 West, of the 4th Principal Meridian, and I re-established said corner according to the Wisconsin statutes as shown and described hereon.

Dated this 8th day of November, 2000

Larry L. Austin
 Larry L. Austin S-1903
 Grant County Coop.



N 478998.8
 E 861090.0



● = CORNER LOCATION
 NORTH 1/4 CORNER OF SECTION 24, T 3 N R 2 W TOWN OF HARRISON

SEAL

HISTORY OF ORIGINAL CORNER ESTABLISHMENT:

Corner was originally set in 1833 by Clark. In 1856 Overton tied to the corner. In 1897 Sampson also tied to the corner.

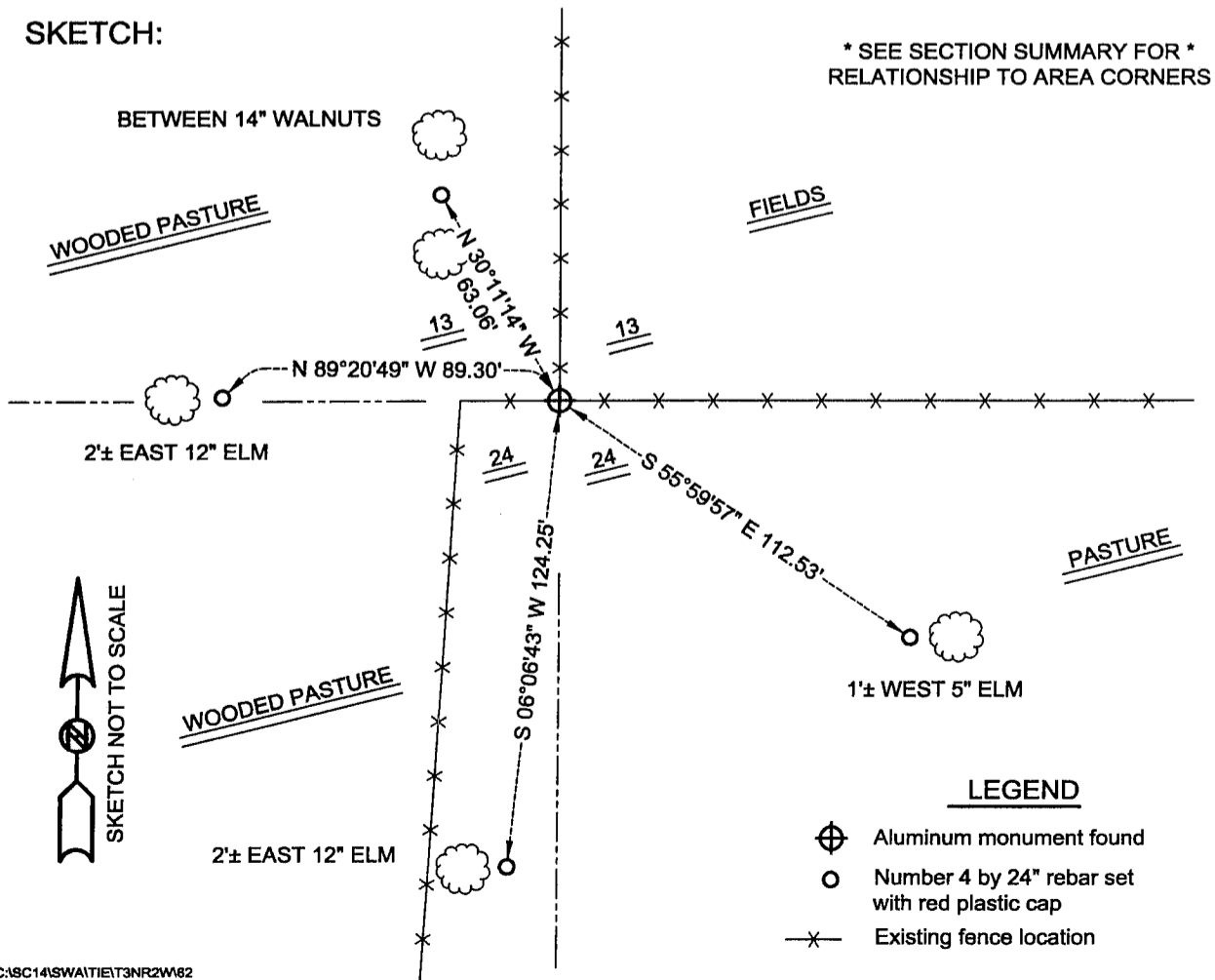
DESCRIPTION OF CORNER EVIDENCE FOUND:

Burbach set an Aluminum monument at this location. I found and accepted the aluminum monument after an EDM & GPS traverse of the area.

DESCRIPTION OF CORNER AND WITNESS MONUMENTS, references and accessories used to perpetuate the original or re-established location of this corner

WITNESS TO THE CORNER LOCATION: SHANE AUSTIN & JASON MILES & BOBBY SEDGWICK

SKETCH:



* SEE SECTION SUMMARY FOR *
RELATIONSHIP TO AREA CORNERS

LEGEND

- ⊕ Aluminum monument found
- Number 4 by 24" rebar set with red plastic cap
- x— Existing fence location