

# GRANT COUNTY CERTIFIED LAND CORNER

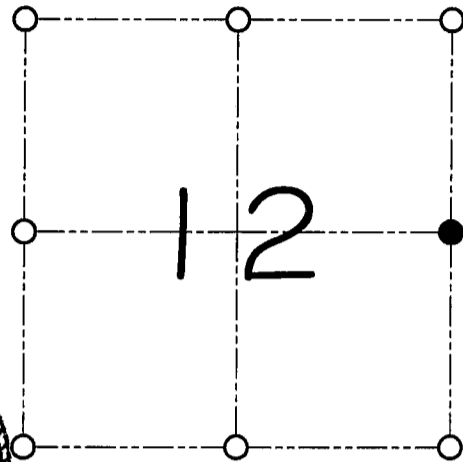
CORNER NUMBER 40

**CERTIFICATE:**

I, Larry L. Austin, do hereby certify that on the 16th day of March, 2000, I found no evidence of the East 1/4 corner of Section 12, Town 3 North, Range 2 West, of the 4th Principal Meridian, and I re-established said corner according to the Wisconsin statutes as shown and described hereon.

Dated this 16th day of April, 2000

*Larry L. Austin*  
Larry L. Austin S-1903



● = CORNER LOCATION  
EAST 1/4 CORNER OF SECTION 12, T 3 N R 2 W TOWN OF HARRISON

**HISTORY OF ORIGINAL CORNER ESTABLISHMENT:**

Corner was originally set in 1832 by Lucuis Lyon.  
No other record of the corner was found.

**DESCRIPTION OF CORNER EVIDENCE FOUND:**

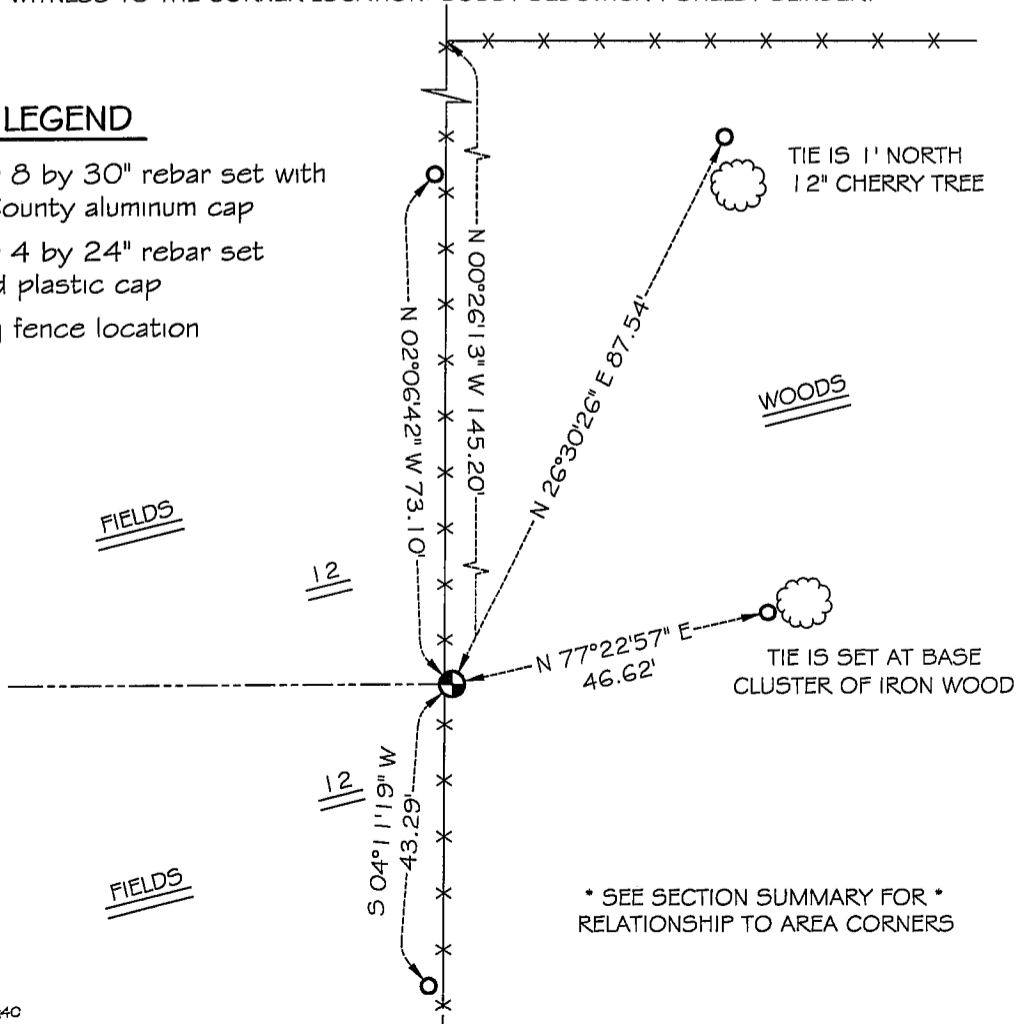
I reset the corner at the proportioned offset from the occupied West 1/4 of Section 7. Verified this location using E.D.M. & G.P.S. methods.

**DESCRIPTION OF CORNER AND WITNESS MONUMENTS, references and accessories used to perpetuate the original or re-established location of this corner**  
WITNESS TO THE CORNER LOCATION: BOBBY SEDGWICK & SHELBY BLINDERT

**SKETCH:**

LEGEND

- Number 8 by 30" rebar set with Grant County aluminum cap
- Number 4 by 24" rebar set with red plastic cap
- ×× Existing fence location



\* SEE SECTION SUMMARY FOR \*  
RELATIONSHIP TO AREA CORNERS

# GRANT COUNTY CERTIFIED LAND CORNER

CORNER NUMBER 34

**CERTIFICATE:**

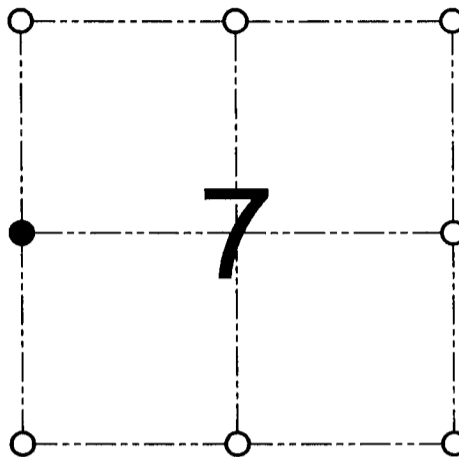
I, Larry L. Austin, do hereby certify that on the 14th day of November, 2000, I found evidence of the West 1/4 corner of Section 7, Town 3 North, Range 1 West, of the 4th Principal Meridian, and I re-established said corner according to the Wisconsin statutes as shown and described hereon.

Dated this 12th day of December, 2000

*Larry L. Austin*  
\_\_\_\_\_  
Larry L. Austin S-1903



SEAL



● = CORNER LOCATION

WEST 1/4 CORNER OF  
SECTION 7, T 3 N R 1 W  
TOWN OF PLATTEVILLE

**HISTORY OF ORIGINAL CORNER ESTABLISHMENT:**

Corner was never originally set.  
No other record of the corner was found.

**DESCRIPTION OF CORNER EVIDENCE FOUND:**

I found a fence East and accepted it for Northing. Easting is online between the East 1/4 corner and the Northeast corner of Section 12. Verified this location using EDM & GPS methods.

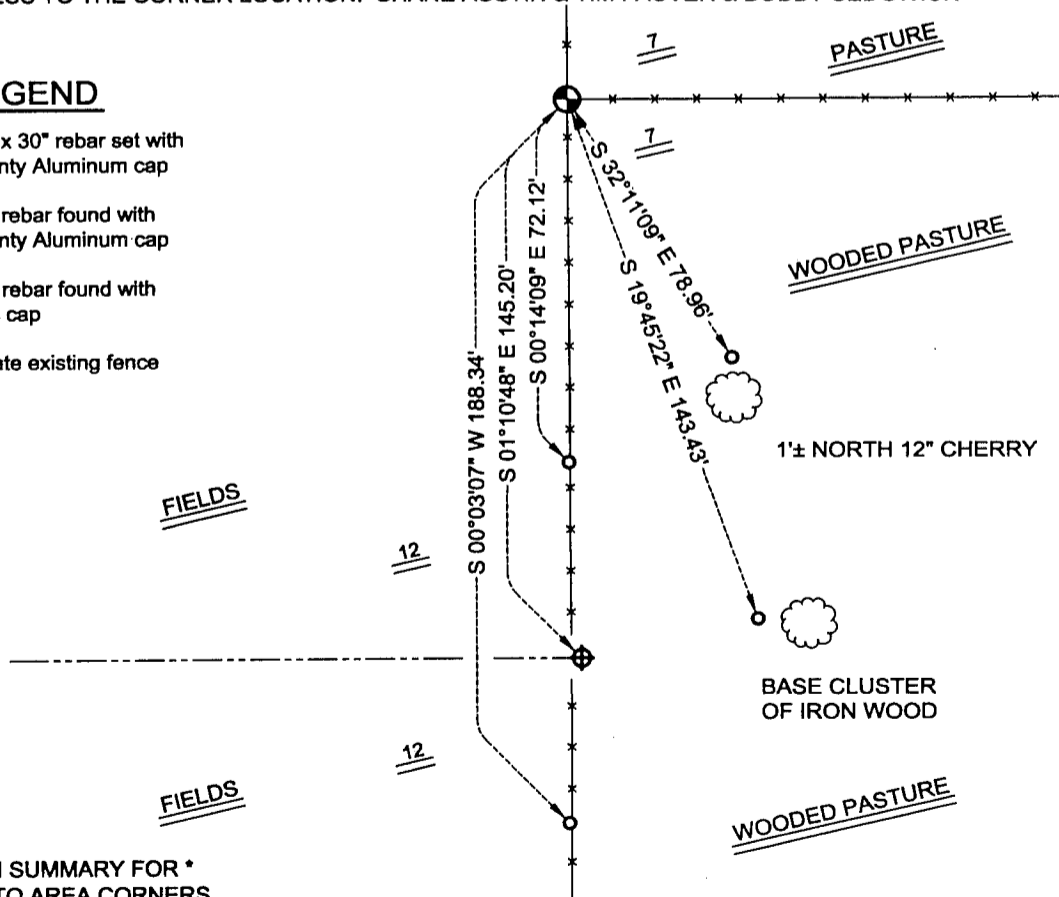
**DESCRIPTION OF CORNER AND WITNESS MONUMENTS, references and accessories used to perpetuate the original or re-established location of this corner**

WITNESS TO THE CORNER LOCATION: SHANE AUSTIN & TIM FAUVER & BOBBY SEDGWICK

**SKETCH:**

LEGEND

- Number 8 x 30" rebar set with Grant County Aluminum cap
- ⊕ Number 8 rebar found with Grant County Aluminum cap
- Number 4 rebar found with red plastic cap
- \*— Approximate existing fence



\* SEE SECTION SUMMARY FOR \*  
RELATIONSHIP TO AREA CORNERS

**AUSTIN ENGINEERING, LLC**  
4211 HWY 81 E, LANCASTER, WI 53813  
PHONE 608-723-6363 FAX 608-723-6702

FIELDBOOK: SDR33, 2001  
G:\T3NR1W\18  
C:\SC14\SWA\TIE\T3NR1W\34

DRAWN BY: SW AUSTIN  
APPROVED: LL AUSTIN  
CREW: BS - SB - SA - TF

JUN 14 2001