

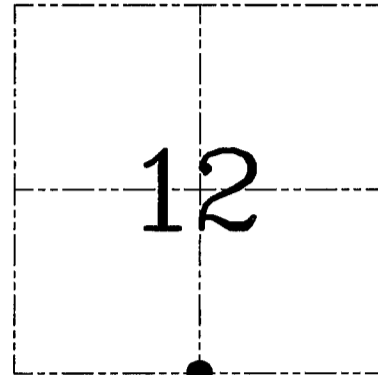
U.S. PUBLIC LAND SURVEY MONUMENT RECORD – GRANT COUNTY, WI

Section 12, Town 3 North Range 2 West, Town of Harrison

CERTIFICATE

I, Larry L. Austin, do hereby certify that the corner location on this record was determined by me and/or under my direct supervision and that this U.S. public land survey monument record is correct and complete to the best of my knowledge and belief.

Larry L. Austin
 Larry L. Austin, S-1903



● = CORNER LOCATION

HISTORY OF CORNER ESTABLISHMENT

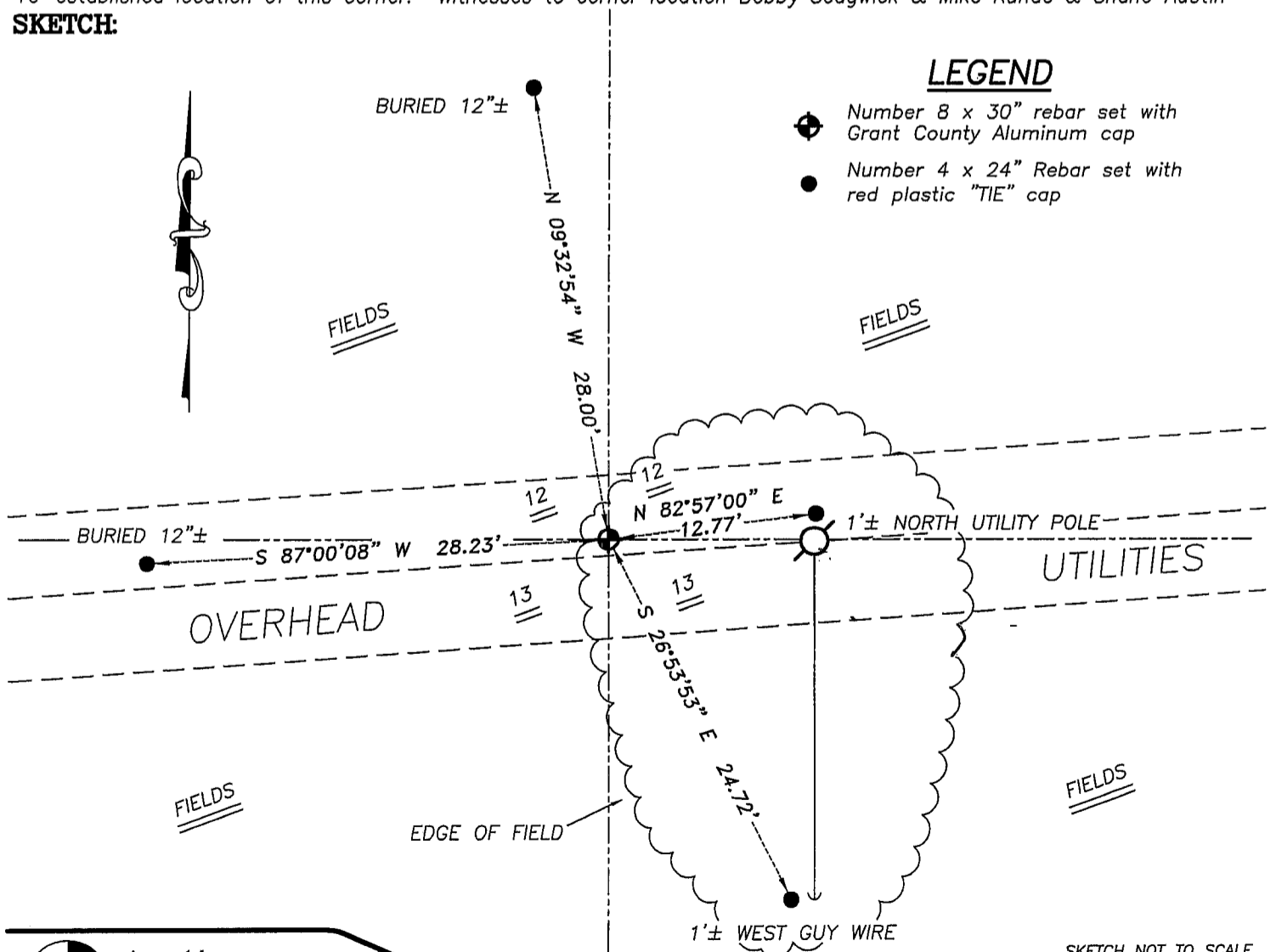
Corner was originally set in 1833 by Clark. In 1897 Sampson found one of the original bearing trees. No other record of the corner was found.

DESCRIPTION OF CORNER EVIDENCE FOUND

I found no evidence of the original corner. - I reset the corner proportionately and on-line between the Southwest and Southeast corners of Section 12. Verified this corner using EDM & GPS methods.

DESCRIPTION OF CORNER AND WITNESS MONUMENTS, references and accessories used to perpetuate the original or re-established location of this corner. Witnesses to corner location Bobby Sedgwick & Mike Runde & Shane Austin

SKETCH:



SKETCH NOT TO SCALE



Austin Engineering LLC

4211 HWY 81 E, LANCASTER, WI 53813
 PHONE 608-723-6363 FAX 608-723-6702

JOB NUMBER 07S139
 FIELDBOOK: TDSR, 2612
 G:\T3NR1W\18
 H:\TIE\T3NR2W\42

DRAWN BY: SW AUSTIN
 APPROVED: LL AUSTIN