

# GRANT COUNTY CERTIFIED LAND CORNER

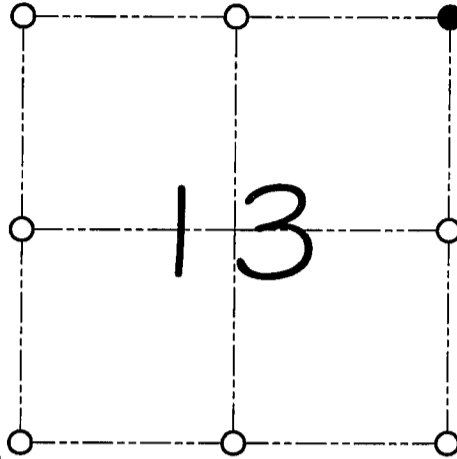
CORNER NUMBER 41

**CERTIFICATE:**

I, Larry L. Austin, do hereby certify that on the 16th day of March, 2000, I found evidence of the Northeast corner of Section 13, Town 3 North, Range 3 West, of the 4th Principal Meridian, and I re-established said corner according to the Wisconsin statutes as shown and described hereon.

Dated this 16th day of April, 2000

*Larry L. Austin*  
Larry L. Austin S-1903



● = CORNER LOCATION

NORTHEAST CORNER OF  
SECTION 13, T 3 N R 3 W  
TOWN OF ~~ROSEMOUNT~~  
HARRISON

**HISTORY OF ORIGINAL CORNER ESTABLISHMENT:**

Corner was originally set in 1832 by Lucius Lyon.  
In 1898 Sampson found evidence of the corner.

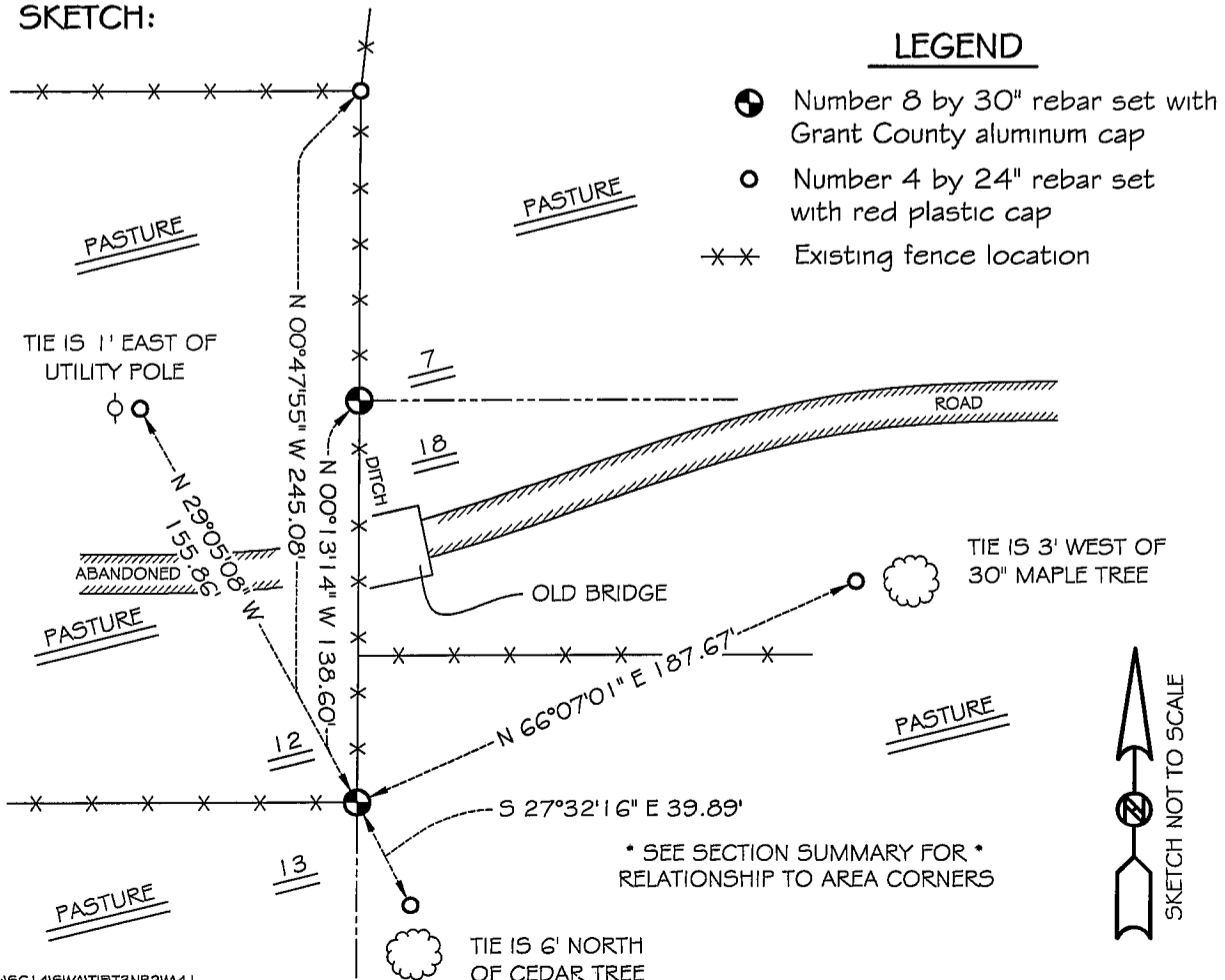
**DESCRIPTION OF CORNER EVIDENCE FOUND:**

I found an occupied fence corner and accepted its location after an E.D.M. & G.P.S. traverse of the area.

**DESCRIPTION OF CORNER AND WITNESS MONUMENTS, references and accessories used to perpetuate the original or re-established location of this corner**

WITNESS TO THE CORNER LOCATION: BOBBY SEDGWICK & SHELBY BLINDERT

**SKETCH:**



# GRANT COUNTY CERTIFIED LAND CORNER

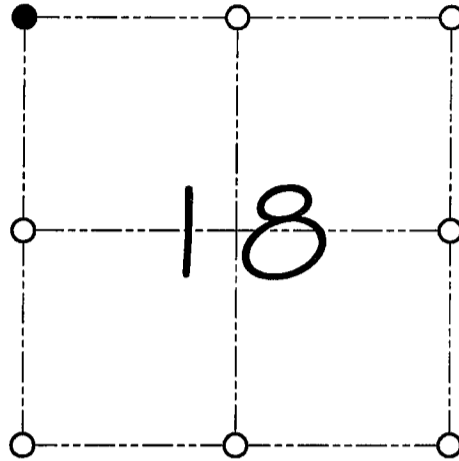
CORNER NUMBER 53

**CERTIFICATE:**

I, Larry L. Austin, do hereby certify that on the 16th day of March, 2000, I found no evidence of the Northwest corner of Section 18, Town 3 North, Range 1 West, of the 4th Principal Meridian, and I re-established said corner according to the Wisconsin statutes as shown and described hereon.

Dated this 16th day of April, 2000

*Larry L. Austin*  
Larry L. Austin S-1903



● = CORNER LOCATION

NORTHWEST CORNER OF SECTION 18, T 3 N R 1 W TOWN OF PLATTEVILLE

**HISTORY OF ORIGINAL CORNER ESTABLISHMENT:**

Corner was originally set in 1833 by Robert Clark.  
In 1898 Sampson tied to the corner.

**DESCRIPTION OF CORNER EVIDENCE FOUND:**

I found no evidence to the location of the corner. I reset the corner at the recorded offset from the Northeast corner of Section 13. Verified this location using E.D.M. & G.P.S. methods.

**DESCRIPTION OF CORNER AND WITNESS MONUMENTS, references and accessories used to perpetuate the original or re-established location of this corner**

WITNESS TO THE CORNER LOCATION: BOBBY SEDGWICK & SHELBY BLINDERT

**SKETCH:**

