

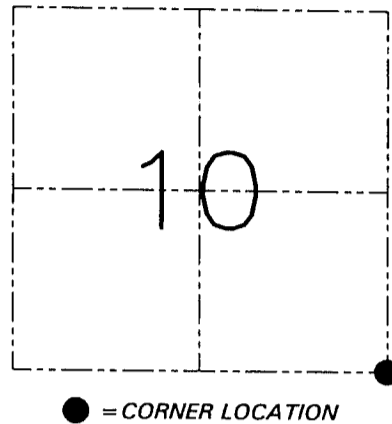
U.S. PUBLIC LAND SURVEY MONUMENT RECORD - GRANT COUNTY, WI
 Section 10, Town 3 North Range 2 West, Town of Harrison

CERTIFICATE

I, Larry L. Austin, do hereby certify that the corner location on this record was determined by me and/or under my direct supervision and that this U.S. public land survey monument record is correct and complete to the best of my knowledge and belief.

Dated this 16th day of February, 2009

Larry L. Austin
 Larry L. Austin S-1903



HISTORY OF CORNER ESTABLISHMENT

Corner was originally set in 1833 by Robert Clark.
 In 1985 Malliet tied out an existing 2" pipe post.

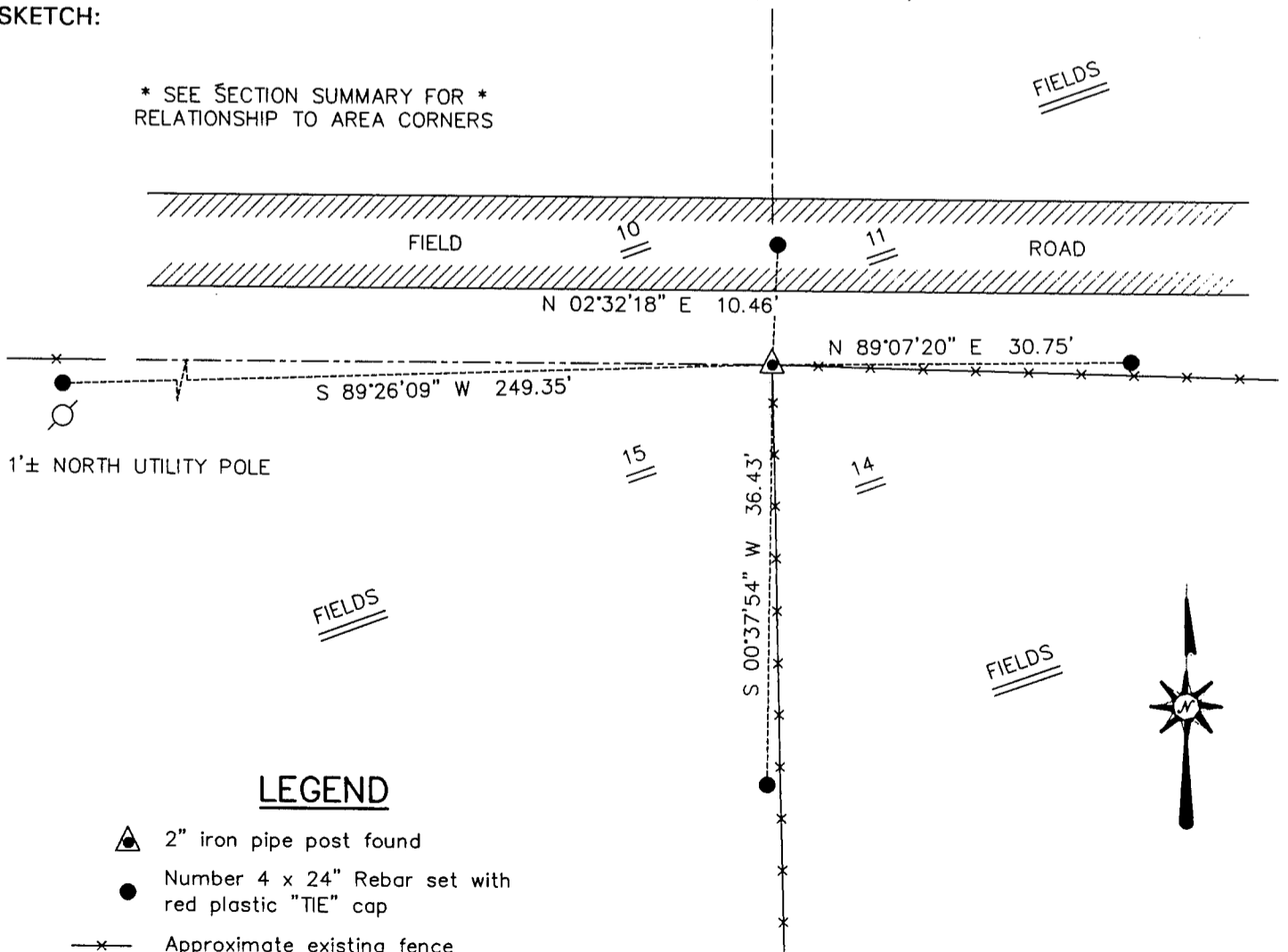
DESCRIPTION OF CORNER EVIDENCE FOUND

I found the existing pipe post and set new ties.
 Verified this location using EDM & GPS methods.

DESCRIPTION OF CORNER AND WITNESS MONUMENTS, references and accessories used to perpetuate the original or re-established location of this corner. Witnesses to the corner location Bobby Sedgwick & Shelby Blindert & Kelly Wolf

SKETCH:

* SEE SECTION SUMMARY FOR *
 RELATIONSHIP TO AREA CORNERS



SKETCH NOT TO SCALE

AUSTIN ENGINEERING, LLC

4211 HWY 81 EAST, LANCASTER, WI 53813
 PHONE 608-723-6363 FAX 608-723-6702

FIELDBOOK: SDR33, 2135

G: \T3NR2W\09
 C: \SWA\TIE\T3NR2W\45
 CREW: BS-SB-KW

DRAWN BY: SW AUSTIN
 APPROVED: LL AUSTIN

CORNER NUMBER 45

Harrison
TOP

NER DESCRIPTION: NE CORNER, SECTION 15, T 3 N, R 2 W

DATE PLANE COORDINATES: N _____, E _____

THETA ANGLE: _____

HORIZONTAL DATUM: WISCONSIN STATE PLANE COORDINATE SYSTEM, SOUTH ZONE

EVIDENCE: FOUND 2" IRON PIPE CORNER POST SET IN CONCRETE, FENCE TO SOUTH,
EAST AND WEST, PIPE LEANING TO SOUTH - USED NORTH FACE OF PIPE AT CONC. BASE

MONUMENT: FOUND , PLACED

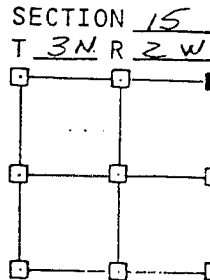
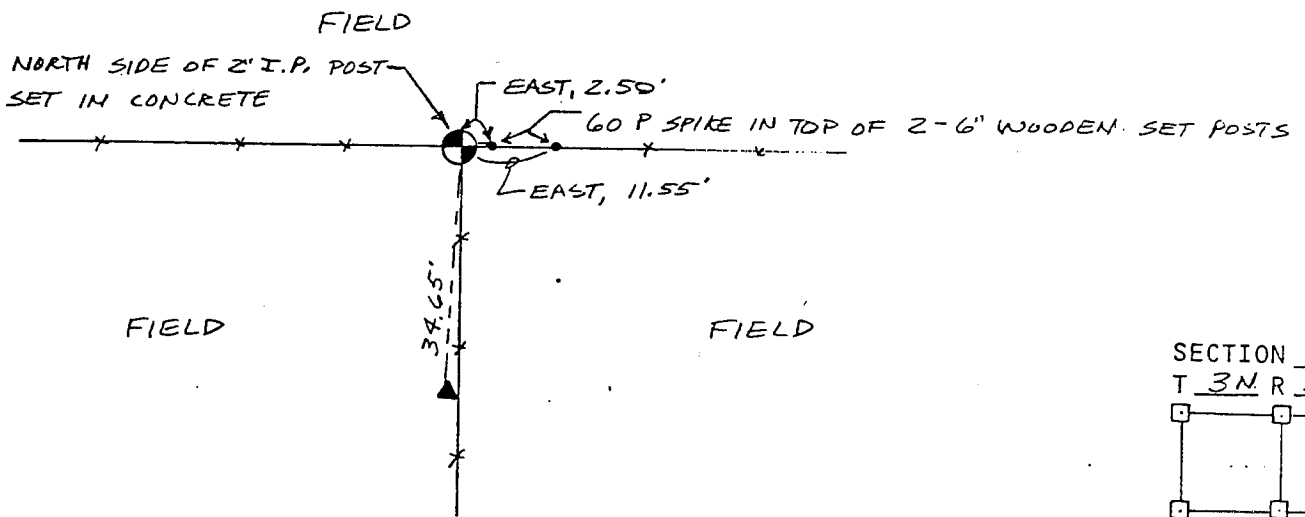
METHOD OF RESTORATION (RE-ESTABLISHMENT):

- ACCEPTED EXISTING MONUMENT
- ACCEPTED OCCUPATION
- LOST CORNER PROPORTIONATE METHODS

DATE CORNER SET: _____

LEGEND

- ▲ SET #6 REBAR, 1.13 LBS PER LINEAL FT. MIN WT
- SET 1" X 24" IRON PIPE, 1.13 LBS PER LINEAL FT. MIN WT
- SET 2" X 30" IRON PIPE, 3.65 LBS PER LINEAL FT. MIN WT
- FOUND 1" IRON PIPE
- FOUND 2" IRON PIPE
- FOUND R/R SPIKE
- SET R/R SPIKE
- ⊙ GOVERNMENT CORNER
- EXISTING FENCE



NOT TO SCALE THIS CONFORMS TO WISCONSIN ADMINISTRATIVE CODE A-E 5.02

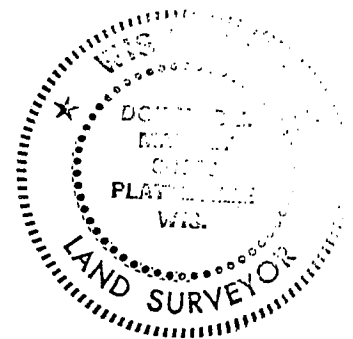
SURVEYOR'S AFFIDAVIT:

STATE OF WISCONSIN) SS
GRANT COUNTY)

I hereby certify that I, _____, have complied with the Wisconsin State Statutes, Statutes of the United States, and the rules and regulations made by the Secretary of the Interior in the location of the corner shown above.

DATE OF SURVEY: 12/17/85

Douglas J. Malliet
REGISTERED LAND SURVEYOR
1266



D. F. BURBACH MUNICIPAL & CIVIL ENGINEERS

410 NORTH SECOND STREET • PLATTEVILLE, WISCONSIN 53818 • (608) 348-3282

12/17/85