

GRANT COUNTY CERTIFIED LAND CORNER

CORNER NUMBER 51

CERTIFICATE:

I, Larry L. Austin, do hereby certify that on the 14th day of June, 2000, I found evidence of the Northeast corner of Section 18, Town 3 North, Range 2 West, of the 4th Principal Meridian, and I re-established said corner according to the Wisconsin statutes as shown and described hereon.

Dated this 13th day of October, 2000

Larry L. Austin
Larry L. Austin S-1903

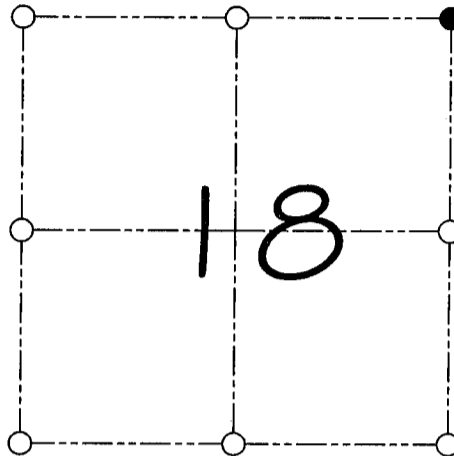
Grant County Cook.

N 484296.9

E 837304.9



SEAL



● = CORNER LOCATION

NORTHEAST CORNER OF
SECTION 18, T 3 N R 2 W
TOWN OF HARRISON

HISTORY OF ORIGINAL CORNER ESTABLISHMENT:

Corner was set in 1833 by Robert Clark.
In 1985 Douglas Malliet found the corner to be in the river.

DESCRIPTION OF CORNER EVIDENCE FOUND:

I found the corner to be in the river based on Malliet's survey.
I set ties and accepted it's location using E.D.M. & G.P.S. methods.

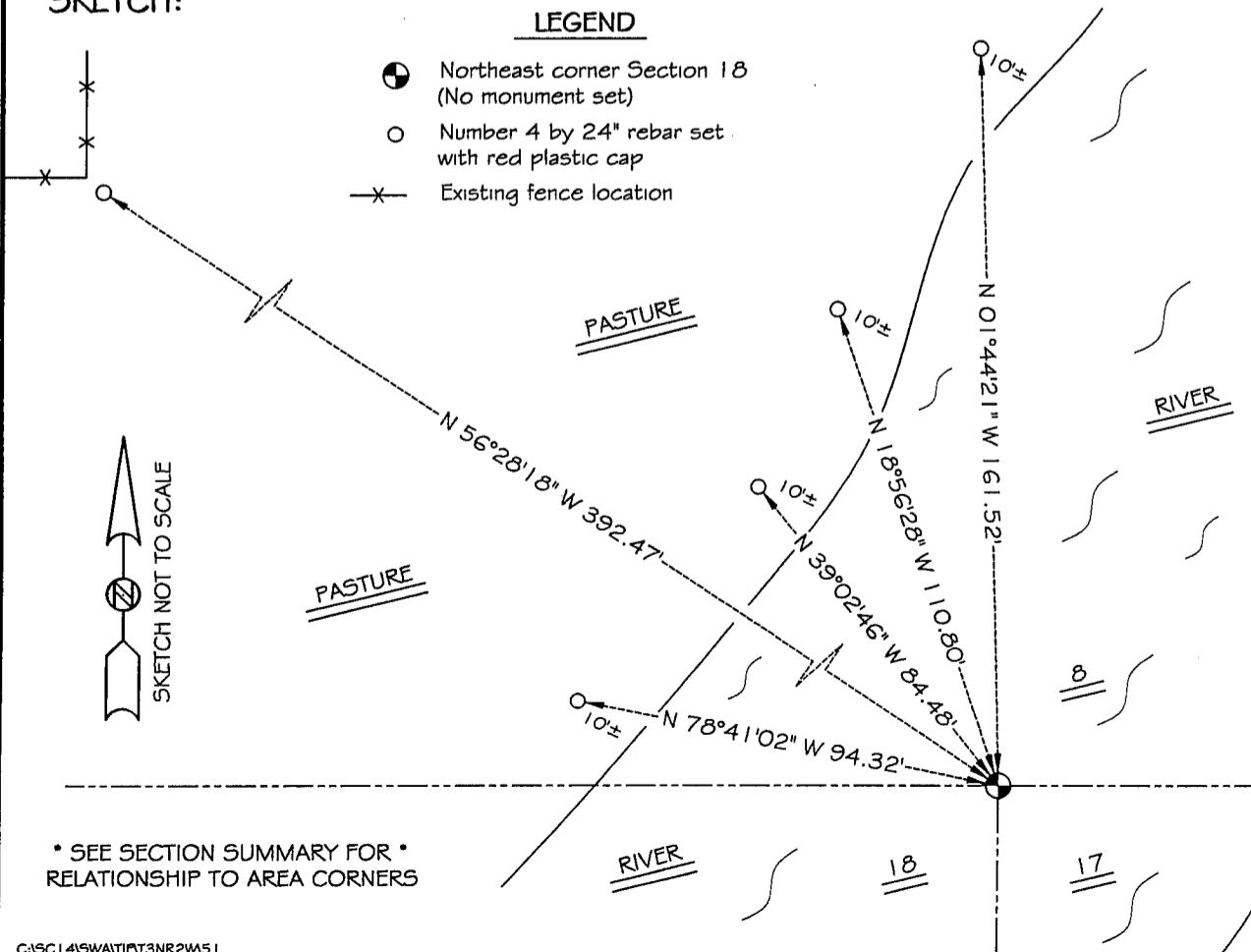
DESCRIPTION OF CORNER AND WITNESS MONUMENTS, references and accessories used to perpetuate the original or re-established location of this corner

WITNESS TO THE CORNER LOCATION: SHELBY BLINDERT & JERRY SPEILMAN

SKETCH:

LEGEND

- Northeast corner Section 18 (No monument set)
- Number 4 by 24" rebar set with red plastic cap
- x— Existing fence location



* SEE SECTION SUMMARY FOR *
RELATIONSHIP TO AREA CORNERS

C:\SC14\SWATT\T3NR2W51