

U.S. PUBLIC LAND SURVEY MONUMENT RECORD - GRANT COUNTY, WI

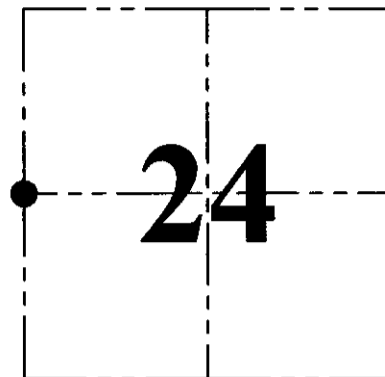
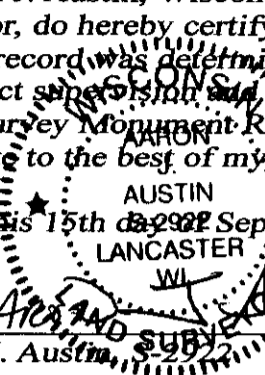
Section 24, Town 3 North Range 2 West, Town of Harrison

CERTIFICATE:

I, Aaron J. Austin, Wisconsin Professional Land Surveyor, do hereby certify that the corner location on this record was determined by me and/or under my direct supervision and that this U.S. Public Land Survey Monument Record is correct and complete to the best of my knowledge and belief.

Dated this 15th day of September, 2015.

Aaron J. Austin
 Wisconsin Professional Land Surveyor
 License No. 3-2932



● = CORNER LOCATION

HISTORY OF CORNER ESTABLISHMENT:

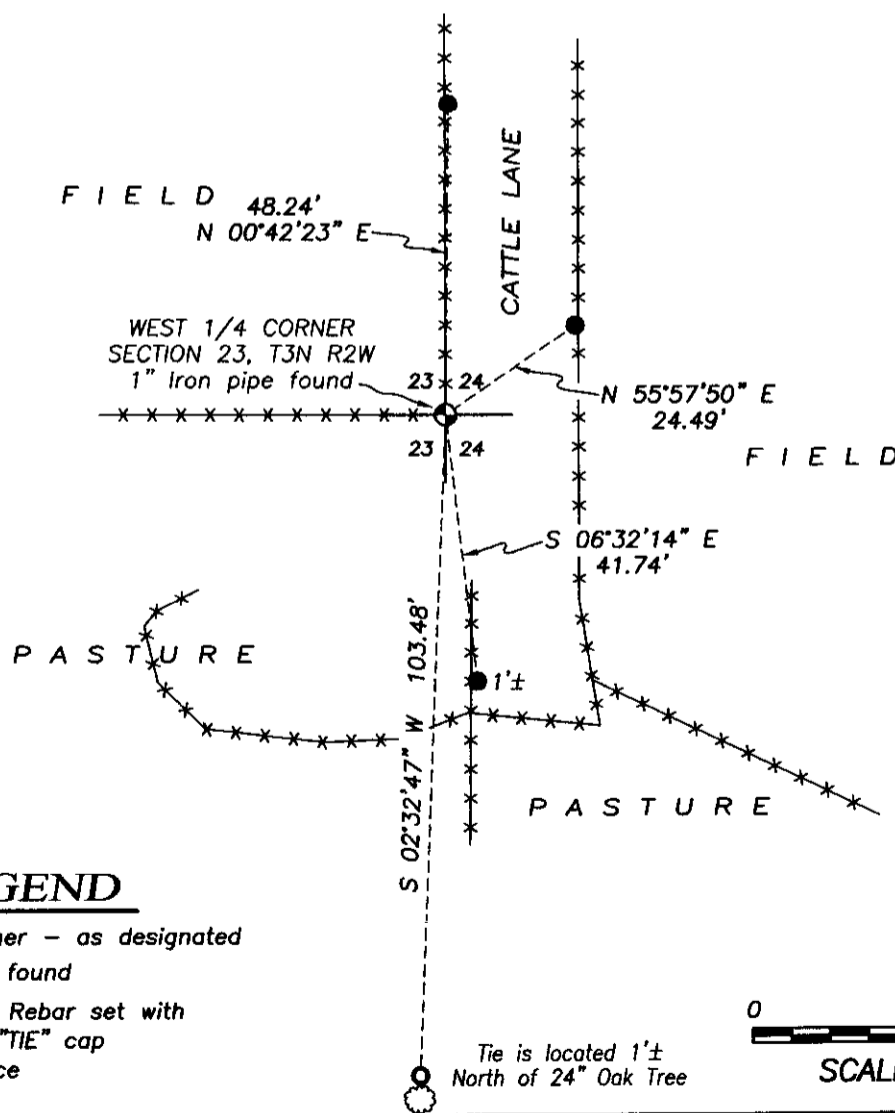
- 1833-Clark set original corner.
- 1846-Wiltse tied to the corner on a Survey in Book B, Page 36.
- 1873-McFall tied to the corner on a Survey in Book C, Page 255.
- 2000-Larry Austin tied to the corner on a Survey in Book 8, Page 16.
- 2000-Larry Austin prepared a Certified Land Corner record for this corner.
- 2005-Larry Austin tied to the corner on a Survey in Book 17, Page 99 and Book 18, Page 40.
- 2013-Aaron Austin tied to the corner on a Survey in Book 33, Page 69.

DESCRIPTION OF CORNER EVIDENCE FOUND:

I found the 1" iron pipe in place and one witness corner. I set 3 additional witness corners after verifying this location with E.D.M. and G.P.S. methods.

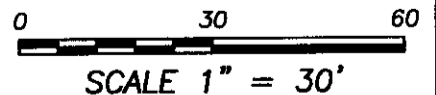
DESCRIPTION OF CORNER AND WITNESS MONUMENTS, references and accessories used to perpetuate the original or re-established location of this corner. Witnesses to corner location Shane Austin.

SKETCH:



LEGEND

- ⊕ Section Corner - as designated
- 1/2" Rebar found
- 1/2" x 12" Rebar set with red plastic "TIE" cap
- *- Existing fence



Austin Engineering LLC
 austinengineeringllc.com

4211 HWY 81 E, LANCASTER, WI 53813
 PHONE: 608-723-6363 FAX: 608-723-6702

JOB NO: 15s173
 H:\CRD\15s173
 H:\TIE\T3NR2W\79(2)

FIELDBOOK: TDSR
 DRAWN BY: AJ AUSTIN
 CREW: BS-SB

CERTIFIED LAND CORNER

Sec. 4, Town 3 N, Range 2 W

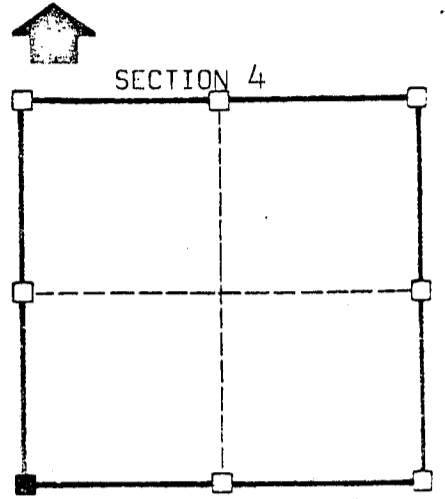
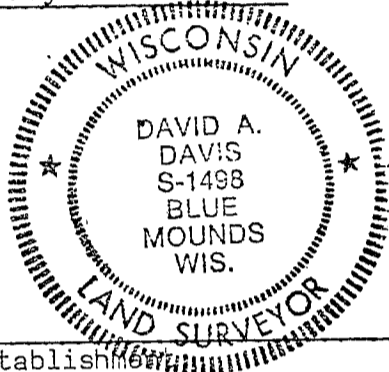
STATE OF WISCONSIN)
COUNTY OF GRANT) S.S.

CERTIFICATE

I, David A. Davis, do hereby certify that on the 10th day of June 1981, I found ~~(evidence)~~ (no evidence) of the Southwest corner of Section 4, T 3 N, R 2 W, Fourth Principal Meridian, and I re-established said corner according to the Wisconsin Statutes as shown and described hereon.

Dated this 11 day of June 1981

David A. Davis
registered land surveyor.
Title



SECTION 4
T 3 N R 2 W
Town of: Harrison

Seal

History of original corner establishment:
None since original government survey.

Description of corner evidence found:
Fence north-south on line with fence to west.

Description of corner and witness monuments, references and accessories used to perpetuate the original or re-established location of this corner:

Witnesses to corner location:
Jim Olson
Garth Althaus

Sketch:

26" WHITE OAK

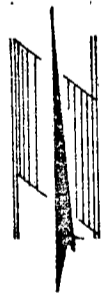


40.11'

33.17'

20.90'

32" BURR OAK



Legend

- x-x- Fenceline
- o No. 6 (3/4" Ø) Rebar
- Railroad Spike

SURVEY CONTROL ORDER

Horizontal				
Vertical				
Corner	East (X)	North (Y)	Elevation (Z)	Zone
Control Sta. Name				

WISCONSIN COORDINATE SYSTEM