

GRANT COUNTY CERTIFIED LAND CORNER

CORNER NUMBER 27

CERTIFICATE:

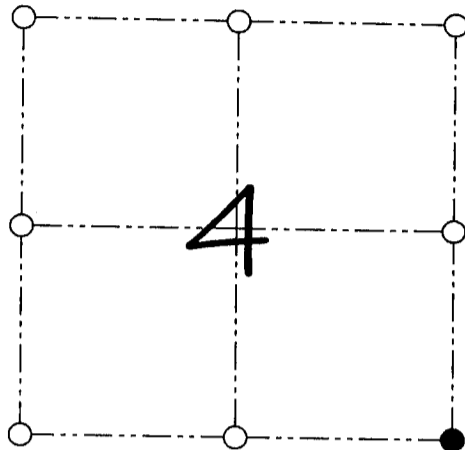
I, Larry L. Austin, do hereby certify that on the 11th day of November, 1995, I found no evidence of the Southeast corner of Section 04, Town 3 North, Range 2 West, of the 4th Principal Meridian, and I re-established said corner according to the Wisconsin statutes as shown and described hereon.

Dated this 1st day of August, 2000

Larry L. Austin
Larry L. Austin S-1903



SEAL



● = CORNER LOCATION

SOUTHEAST CORNER OF
SECTION 4, T 3 N R 2 W
TOWN OF HARRISON

HISTORY OF ORIGINAL CORNER ESTABLISHMENT:

Corner was originally set in 1833 by Robert Clark.
Geo Stuntz tied to the corner in 1847. No mention of findings.

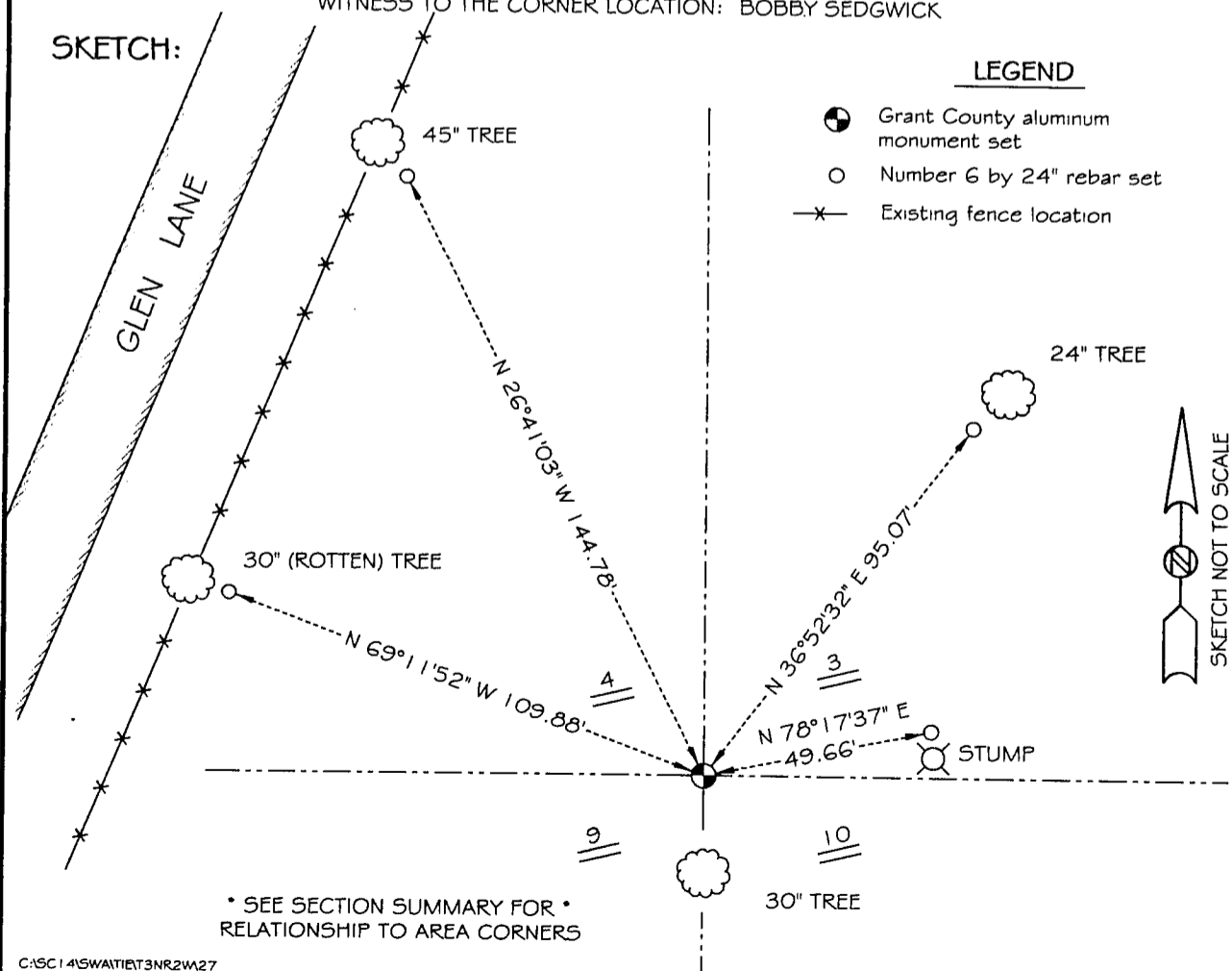
DESCRIPTION OF CORNER EVIDENCE FOUND:

I found no evidence to the location of the corner. I reset
the corner by proportioning North - South.
Verified this location using E.D.M. methods.

DESCRIPTION OF CORNER AND WITNESS MONUMENTS, references and accessories used to perpetuate the original or re-established location of this corner

WITNESS TO THE CORNER LOCATION: BOBBY SEDGWICK

SKETCH:



LEGEND

- Grant County aluminum monument set
- Number 6 by 24" rebar set
- *— Existing fence location



* SEE SECTION SUMMARY FOR *
RELATIONSHIP TO AREA CORNERS