

GRANT COUNTY CERTIFIED LAND CORNER

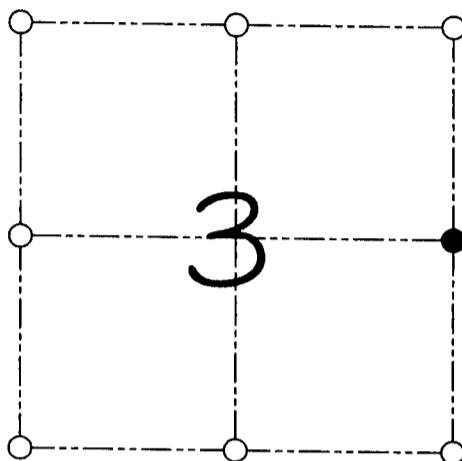
CORNER NUMBER 18

CERTIFICATE:

I, Larry L. Austin, do hereby certify that on the 11th day of November, 1995, I found evidence of the East 1/4 corner of Section 3, Town 3 North, Range 2 West, of the 4th Principal Meridian, and I re-established said corner according to the Wisconsin statutes as shown and described hereon.

Dated this 9th day of June, 2000

Larry L. Austin
Larry L. Austin S-1903



● = CORNER LOCATION

EAST 1/4 CORNER OF SECTION 03, T 3 N R 2 W TOWN OF HARRISON

HISTORY OF ORIGINAL CORNER ESTABLISHMENT:

Corner was originally set in 1833 by Robert Clark. In 1847 Geo Stuntz found the original corner, In 1885 Overton tied to the corner.

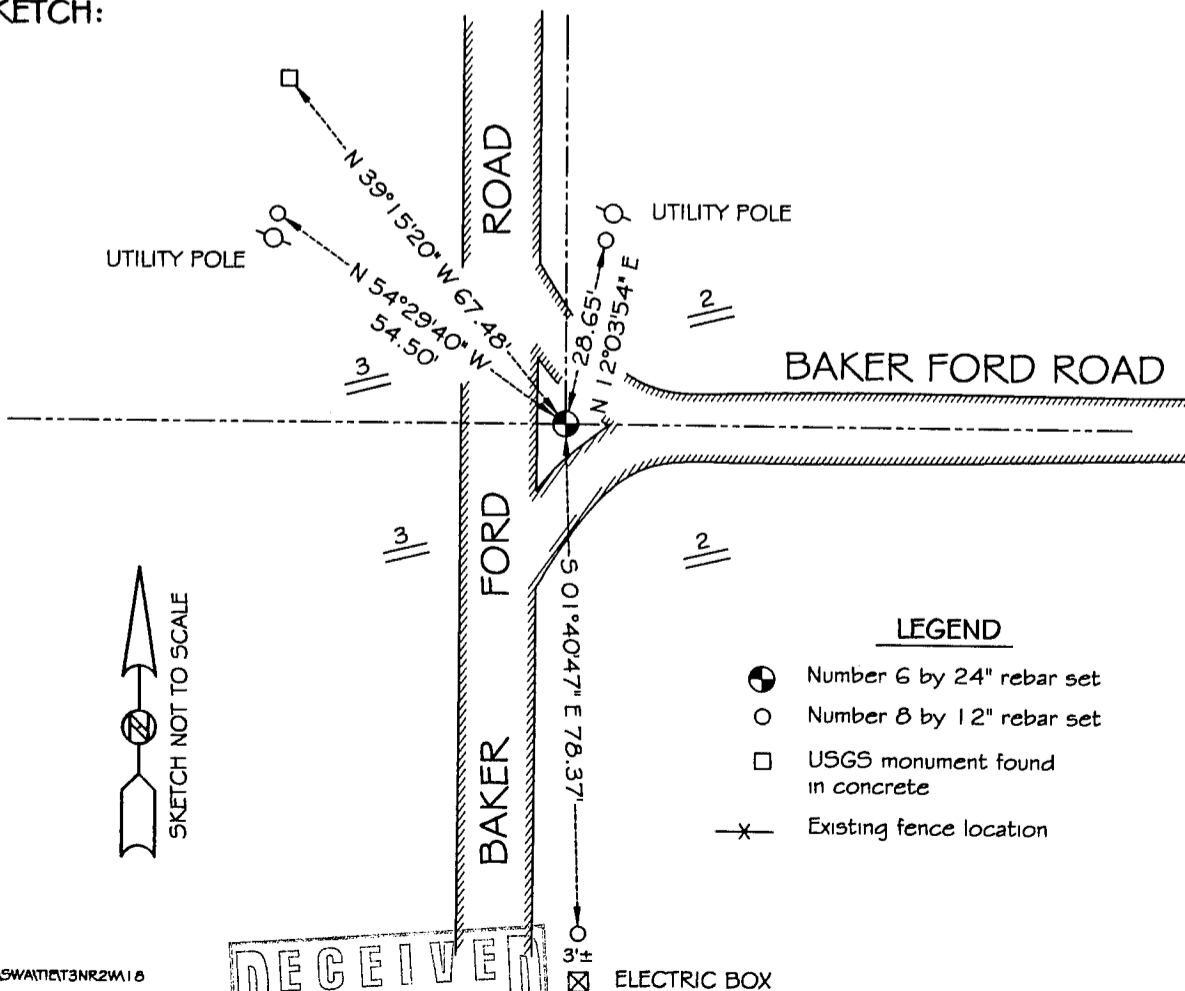
DESCRIPTION OF CORNER EVIDENCE FOUND:

I reset the corner based on proportionate measurements on the East line of Section 3. Verified this location using E.D.M. methods.

DESCRIPTION OF CORNER AND WITNESS MONUMENTS, references and accessories used to perpetuate the original or re-established location of this corner

WITNESS TO THE CORNER LOCATION: BOBBY SEDGWICK

SKETCH:



RECEIVED
FEB 27 2002
JA

FEB 27 2002