

GRANT COUNTY CERTIFIED LAND CORNER

CORNER NUMBER 23

CERTIFICATE:

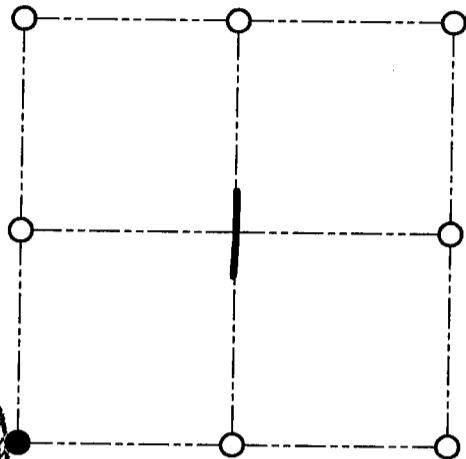
I, Larry L. Austin, do hereby certify that on the 3rd day of August, 2000, I found evidence of the Southwest corner of Section 1, Town 3 North, Range 2 West, of the 4th Principal Meridian, and I re-established said corner according to the Wisconsin statutes as shown and described hereon.

Dated this 25th day of September, 2000

Larry L. Austin
Larry L. Austin S-1903



SEAL



● = CORNER LOCATION
SOUTHWEST CORNER OF SECTION 1, T 3 N R 2 W TOWN OF HARRISON

HISTORY OF ORIGINAL CORNER ESTABLISHMENT:

Corner was originally set in 1833 by Robert Clark.
No other record of the corner was found.

DESCRIPTION OF CORNER EVIDENCE FOUND:

I found an existing nail at an occupied location.
I accepted this location after an E.D.M. & G.P.S. traverse of the area.

DESCRIPTION OF CORNER AND WITNESS MONUMENTS, references and accessories used to perpetuate the original or re-established location of this corner

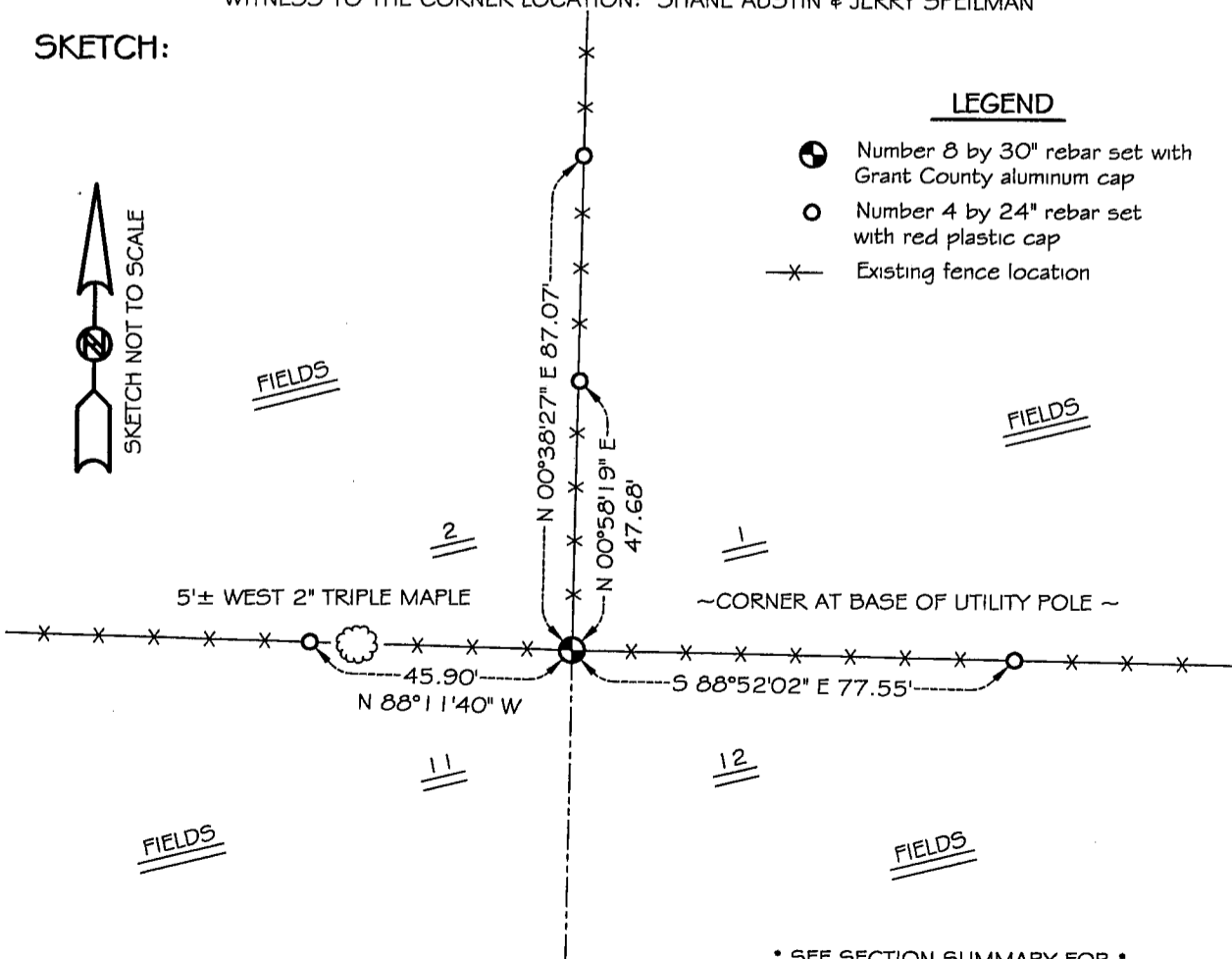
WITNESS TO THE CORNER LOCATION: SHANE AUSTIN & JERRY SPEILMAN

SKETCH:



LEGEND

- Number 8 by 30" rebar set with Grant County aluminum cap
- Number 4 by 24" rebar set with red plastic cap
- X— Existing fence location



• SEE SECTION SUMMARY FOR •
RELATIONSHIP TO AREA CORNERS