

GRANT COUNTY CERTIFIED LAND CORNER

CORNER NUMBER 20

CERTIFICATE:

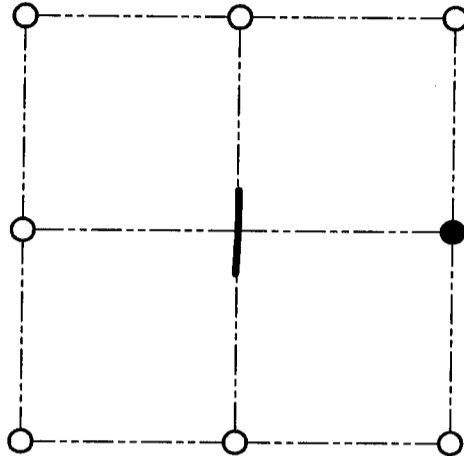
I, Larry L. Austin, do hereby certify that on the 3rd day of August, 2000, I found evidence of the East 1/4 corner of Section 1, Town 3 North, Range 2 West, of the 4th Principal Meridian, and I re-established said corner according to the Wisconsin statutes as shown and described hereon.

Dated this 22nd day of September, 2000

Larry L. Austin
Larry L. Austin S-1903



SEAL



● = CORNER LOCATION

EAST 1/4 CORNER OF
SECTION 1, T 3 N R 2 W
TOWN OF HARRISON

HISTORY OF ORIGINAL CORNER ESTABLISHMENT:

Corner was originally set in 1832 by Lucius Lyon.
Geo Stunts tied to the corner and found the original.
In 1988 I set a 1" iron bar at this location.

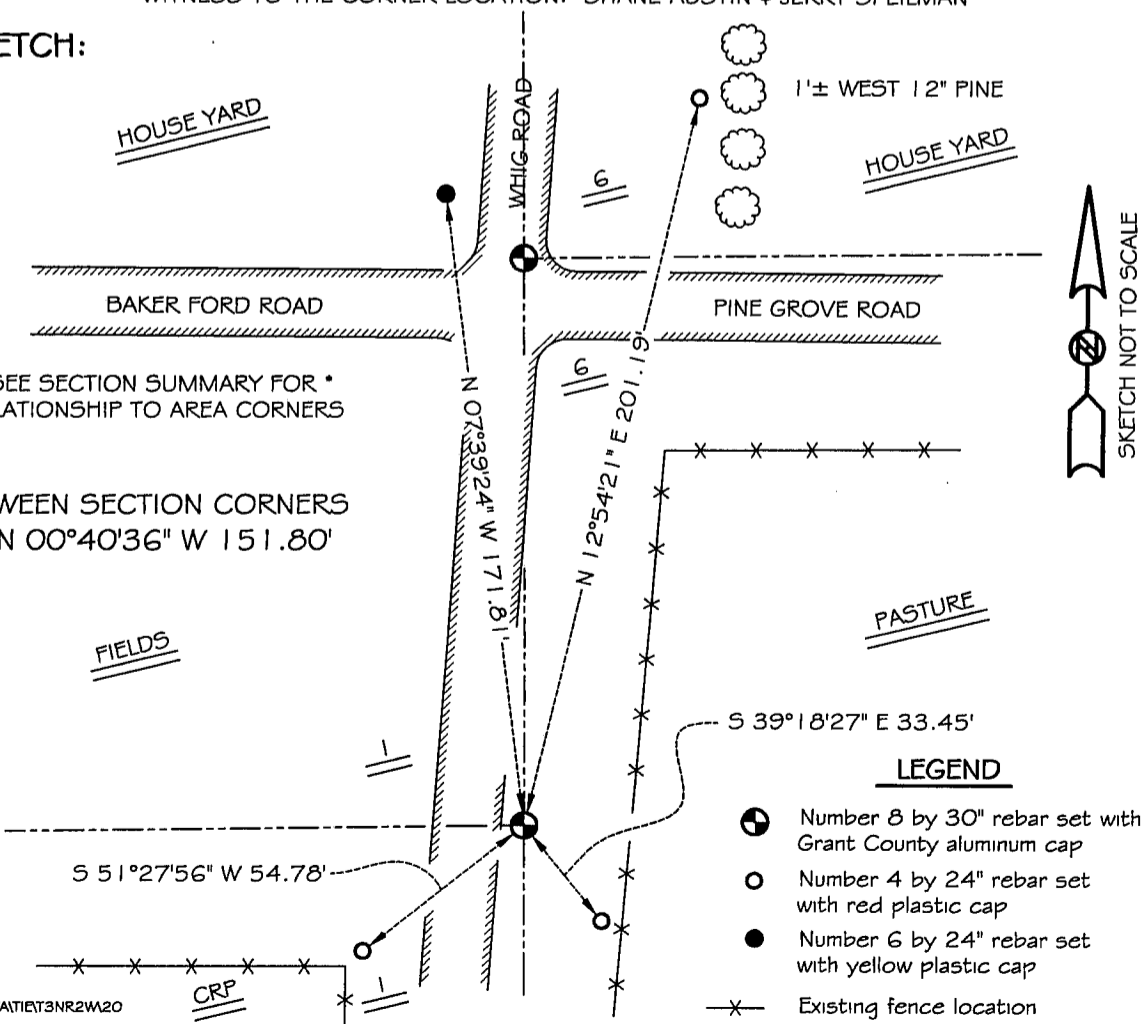
DESCRIPTION OF CORNER EVIDENCE FOUND:

I was unable to locate the iron bar. I reset
it based on evidence of the survey. Verified this location using E.D.M. & G.P.S. methods.

DESCRIPTION OF CORNER AND WITNESS MONUMENTS, references and accessories used to perpetuate the original or re-established location of this corner

WITNESS TO THE CORNER LOCATION: SHANE AUSTIN & JERRY SPEILMAN

SKETCH:



LEGEND

- Number 8 by 30" rebar set with Grant County aluminum cap
- Number 4 by 24" rebar set with red plastic cap
- Number 6 by 24" rebar set with yellow plastic cap
- x— Existing fence location

GRANT COUNTY CERTIFIED LAND CORNER

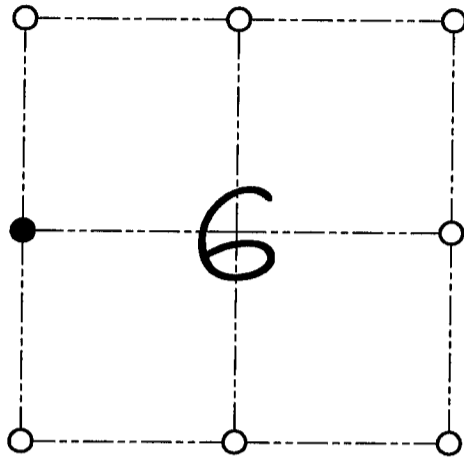
CORNER NUMBER 14

CERTIFICATE:

I, Larry L. Austin, do hereby certify that on the 3rd day of August, 2000, I found evidence of the West 1/4 corner of Section 6, Town 3 North, Range 1 West, of the 4th Principal Meridian, and I re-established said corner according to the Wisconsin statutes as shown and described hereon.

Dated this 22nd day of September, 2000

Larry L. Austin S-1903



● = CORNER LOCATION

WEST 1/4 CORNER OF SECTION 6, T 3 N R 1 W TOWN OF PLATTEVILLE

HISTORY OF ORIGINAL CORNER ESTABLISHMENT:

In 1988 I set a 1" iron bar at this location.

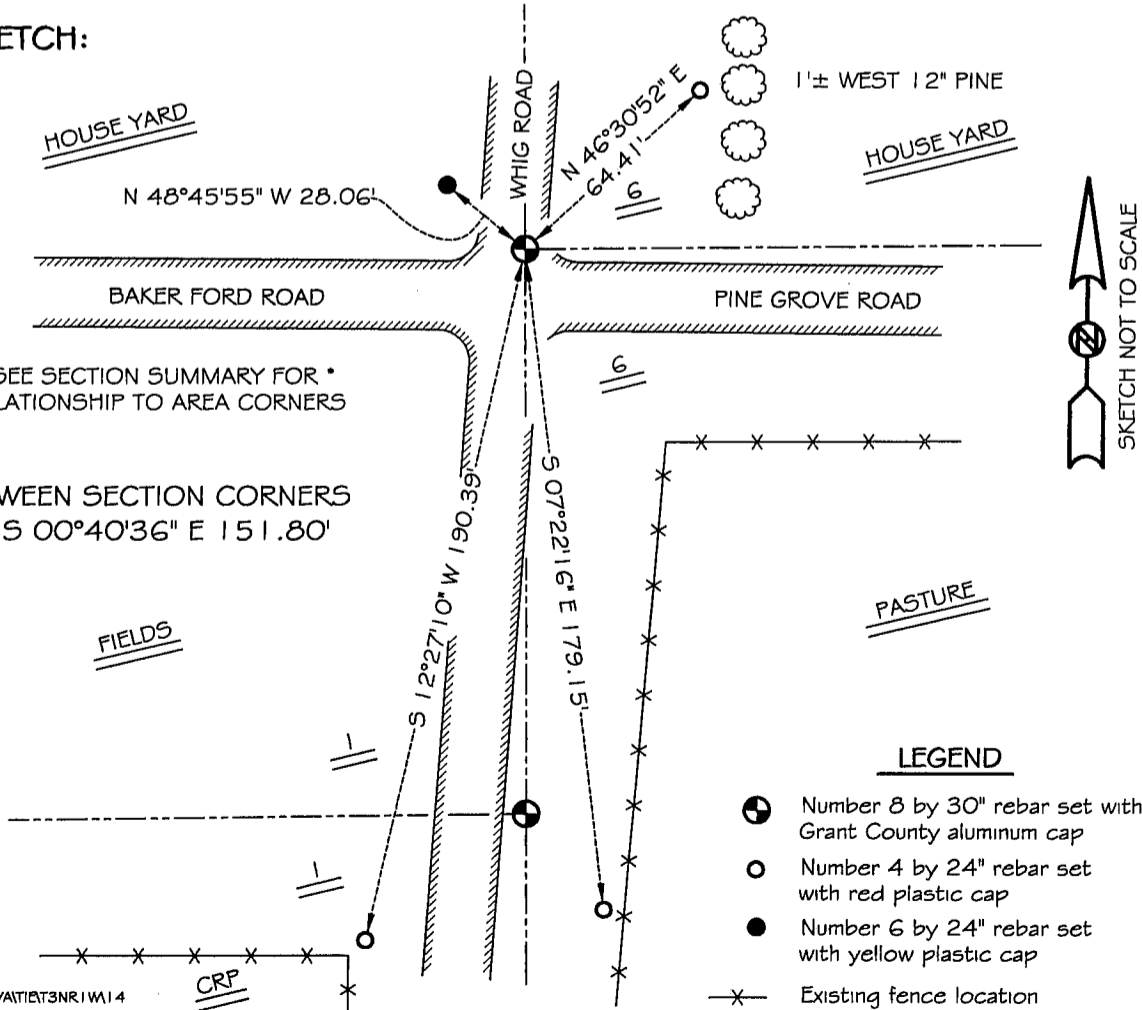
DESCRIPTION OF CORNER EVIDENCE FOUND:

I was unable to locate the 1" iron bar do to road construction. I reset the corner based on evidence of the survey. Verified this location using E.D.M. & G.P.S. methods.

DESCRIPTION OF CORNER AND WITNESS MONUMENTS, references and accessories used to perpetuate the original or re-established location of this corner

WITNESS TO THE CORNER LOCATION: SHANE AUSTIN & JERRY SPEILMAN

SKETCH:



CASC14SWAITIET3NR1W14