

# GRANT COUNTY CERTIFIED LAND CORNER

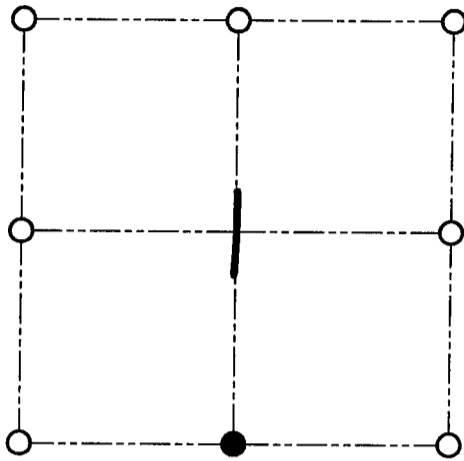
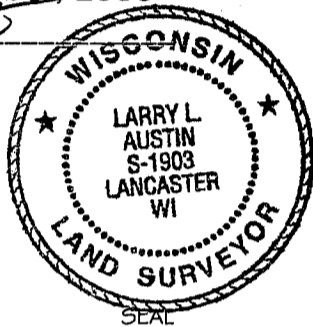
CORNER NUMBER 22

**CERTIFICATE:**

I, Larry L. Austin, do hereby certify that on the 3rd day of August, 2000, I found evidence of the South 1/4 corner of Section 1, Town 3 North, Range 2 West, of the 4th Principal Meridian, and I re-established said corner according to the Wisconsin statutes as shown and described hereon.

Dated this 22nd day of September, 2000

*Larry L. Austin*  
Larry L. Austin S-1903



● = CORNER LOCATION

SOUTH 1/4 CORNER OF SECTION 1, T 3 N R 2 W TOWN OF HARRISON

**HISTORY OF ORIGINAL CORNER ESTABLISHMENT:**

Corner was originally set in 1833 by Robert Clark.  
In 1840 Freeman tied to and found the original corner.

**DESCRIPTION OF CORNER EVIDENCE FOUND:**

I found an existing fence corner and accepted it's location after an E.D.M. & G.P.S. traverse of the area.

**DESCRIPTION OF CORNER AND WITNESS MONUMENTS, references and accessories used to perpetuate the original or re-established location of this corner**

WITNESS TO THE CORNER LOCATION: SHANE AUSTIN & SHELBY BLINDERT & BOBBY SEDGWICK

**SKETCH:**

