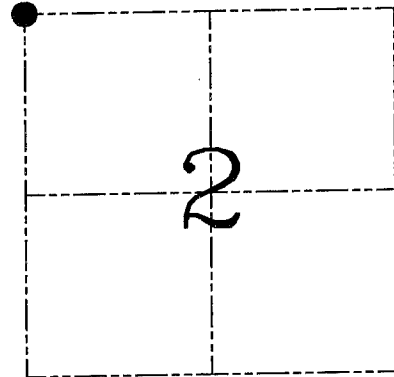
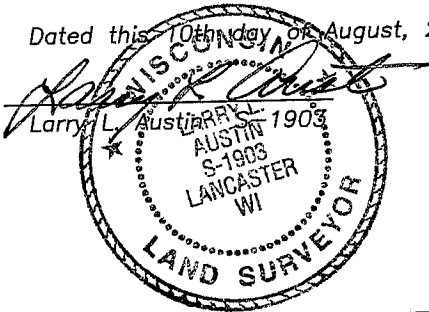


**U.S. PUBLIC LAND SURVEY MONUMENT RECORD – GRANT COUNTY, WI**  
**Section 2, Town 2 North Range 1 West, Town of Smelser**

CERTIFICATE

I, Larry L. Austin, do hereby certify that the corner location on this record was determined by me and/or under my direct supervision and that this U.S. public land survey monument record is correct and complete to the best of my knowledge and belief.

Dated this 10th day of August, 2004



● = CORNER LOCATION

HISTORY OF CORNER ESTABLISHMENT

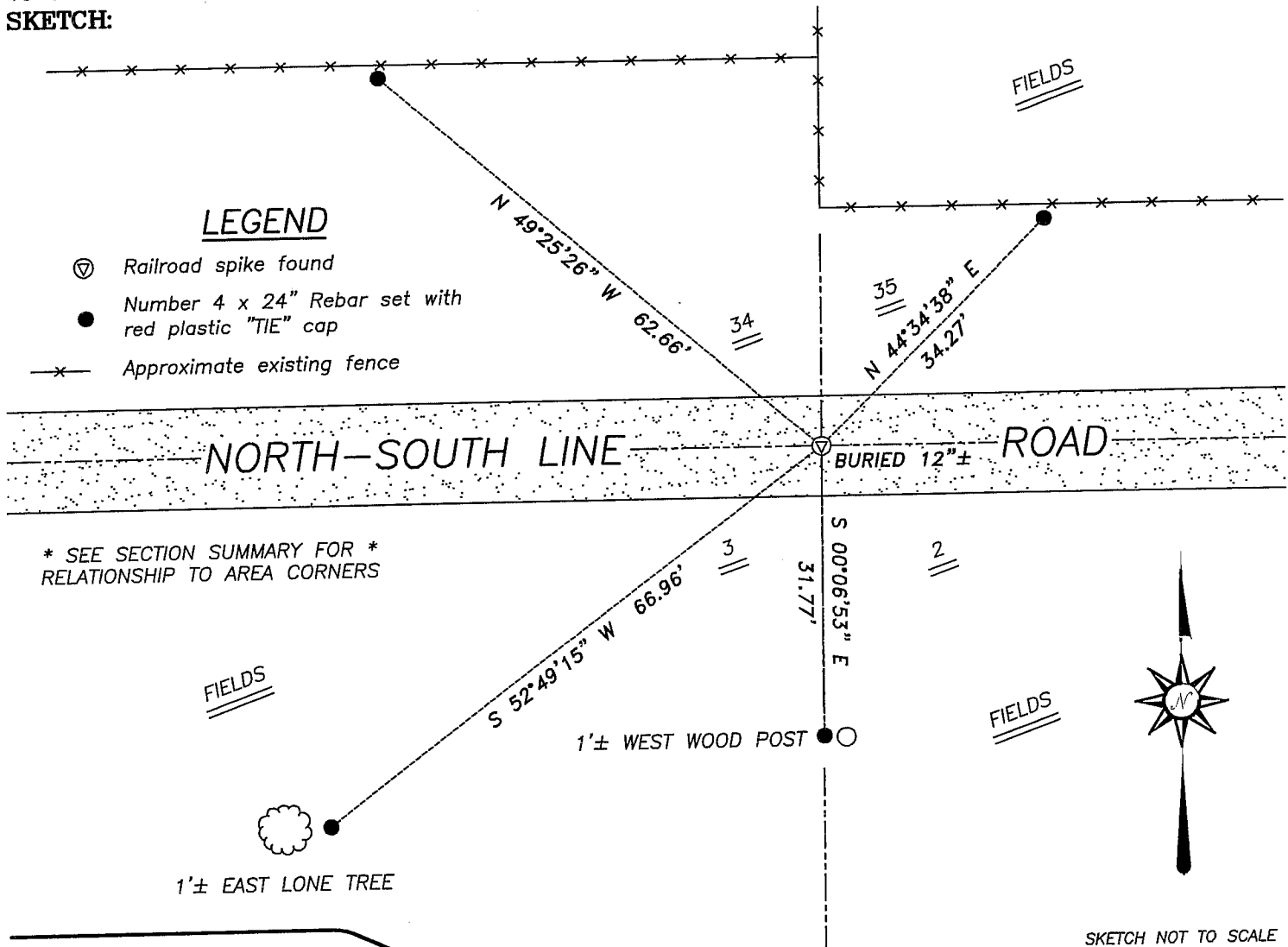
Corner was originally set in 1832 by Lucius Lyon. In 1855 Overton tied to the corner. No other record of the corner was found.

DESCRIPTION OF CORNER EVIDENCE FOUND

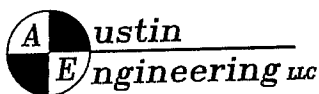
I was unable to locate evidence of the original corner. I found and accepted an existing railroad spike at an occupied location. Verified this location using EDM & GPS methods.

DESCRIPTION OF CORNER AND WITNESS MONUMENTS, references and accessories used to perpetuate the original or re-established location of this corner. Witnesses to corner location Bobby Sedgwick & Shelby Blindert & Brad Digman

**SKETCH:**



SKETCH NOT TO SCALE



4211 HWY 81 E, LANCASTER, WI 53813  
 PHONE 608-723-6363 FAX 608-723-6702

JOB NUMBER 04S148  
 FIELDBOOK: TSDR, 2406  
 G:\T3NR1W\23  
 H:\TIE\T2NR1W\05

DRAWN BY: SW AUSTIN  
 APPROVED: LL AUSTIN