

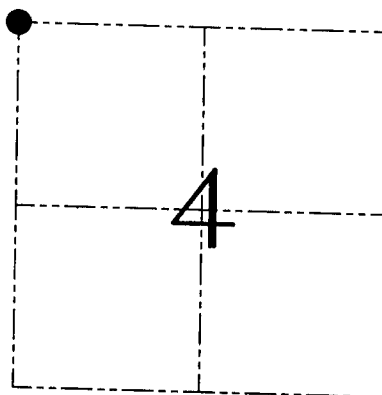
U.S. PUBLIC LAND SURVEY MONUMENT RECORD - GRANT COUNTY, WI
Section 4, Town 2 North Range 1 West, Town of Smelser

CERTIFICATE

I, Larry L. Austin, do hereby certify that the corner location on this record was determined by me and/or under my direct supervision and that this U.S. public land survey monument record is correct and complete to the best of my knowledge and belief.

Dated this 31st day of October, 2002

Larry L. Austin
 Larry L. Austin S-1903



● = CORNER LOCATION

HISTORY OF CORNER ESTABLISHMENT

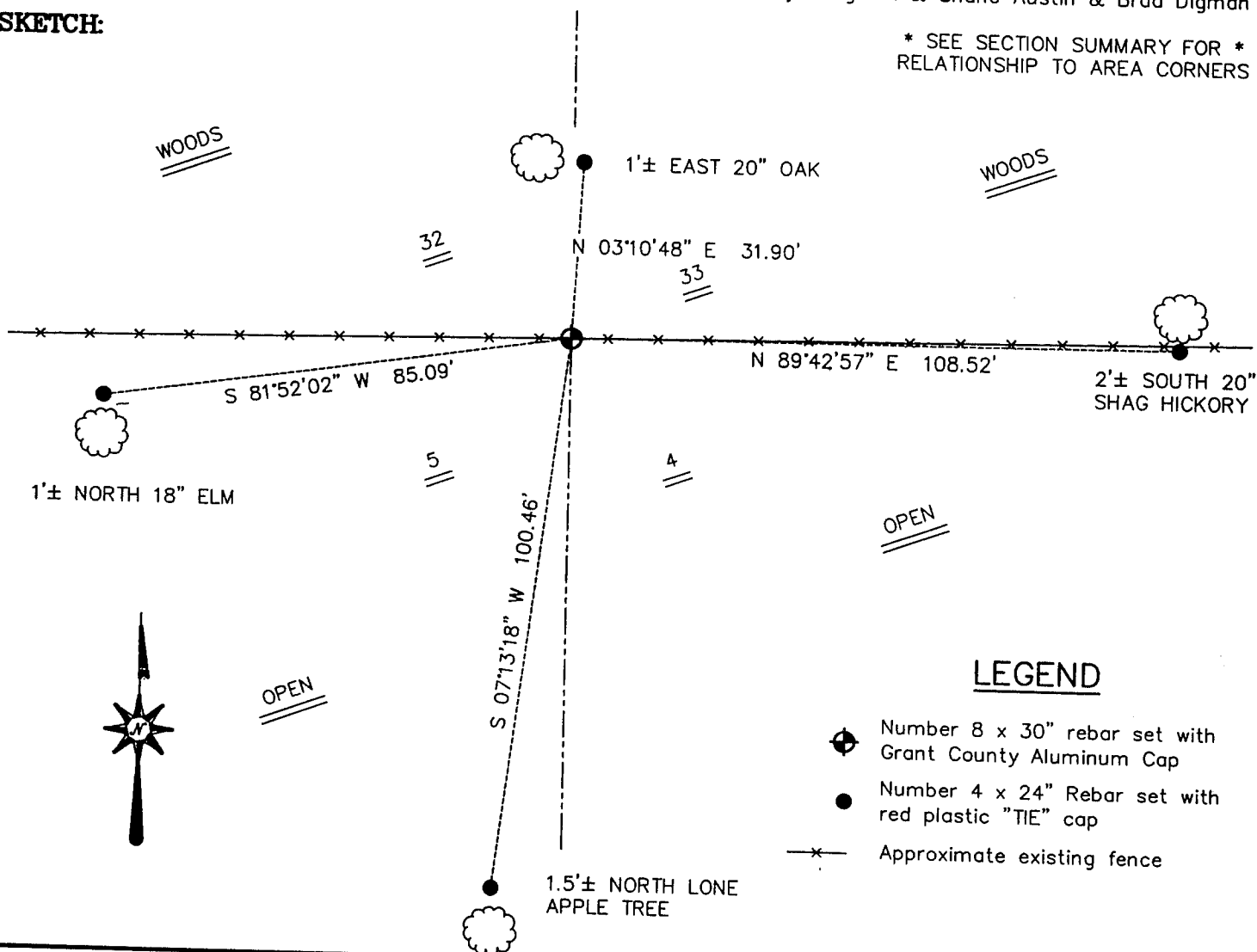
Corner was originally set in 1840 by Lucius Lyon. In 1840 Freeman tied to the original corner. No other record of the corner was found.

DESCRIPTION OF CORNER EVIDENCE FOUND

I reset the corner based on an East-West fence for Northing. I established the Easting by proportioning to the North 1/4 of Section 5 and the North 1/4 of Section 4. This location fits dimensions of a survey by Geo Stuntz in the East 1/2 of the Southwest 1/4 of Section 33, T3N T1W. Verified this location using EDM & GPS methods.

DESCRIPTION OF CORNER AND WITNESS MONUMENTS, references and accessories used to perpetuate the original or re-established location of this corner. Witnesses to corner location Bobby Sedgwick & Shane Austin & Brad Digman

SKETCH:



* SEE SECTION SUMMARY FOR *
 RELATIONSHIP TO AREA CORNERS

LEGEND

- Number 8 x 30" rebar set with Grant County Aluminum Cap
- Number 4 x 24" Rebar set with red plastic "TIE" cap
- x— Approximate existing fence

SKETCH NOT TO SCALE

AUSTIN ENGINEERING, LLC
 4211 HWY 81 EAST, LANCASTER, WI 53813
 PHONE 608-723-6363 FAX 608-723-6702

FIELDBOOK: SDR33, 2232
 G: \T2NR1W\04
 C: \SWA\TIE\T2NR1W\09
 JOB # 02S273

DRAWN BY: SW AUSTIN
 APPROVED: LL AUSTIN

CORNER NUMBER 09