

GRANT COUNTY CERTIFIED LAND CORNER

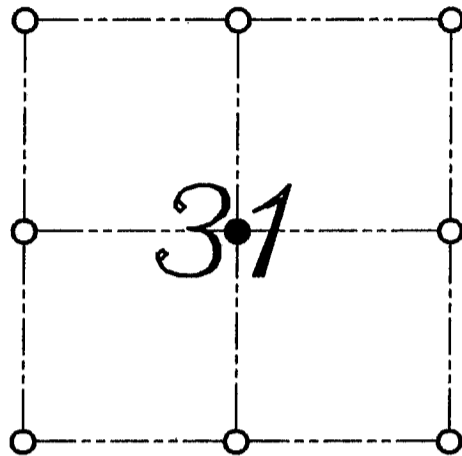
CERTIFICATE:

I, LARRY L. AUSTIN, DO HEREBY CERTIFY THAT ON THIRTIETH DAY OF APRIL, 1999, I FOUND MONUMENTED EVIDENCE OF THE CENTER OF SECTION 31, TOWN 3 NORTH, RANGE 1 WEST, OF THE FOURTH PRINCIPAL MERIDIAN, AND I RE-ESTABLISHED SAID CORNER ACCORDING TO THE WISCONSIN STATUTES AS SHOWN AND DESCRIBED HEREON.

DATED THIS TWENTY-SECOND DAY OF MAY, 1999

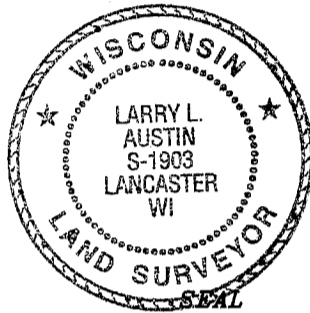
Larry L. Austin
LARRY L. AUSTIN S-1903

CORNER NUMBER 114.5



● = CORNER LOCATION

CENTER OF SECTION
SECTION 31, T 3 N R 1 W
TOWN OF PLATTEVILLE



HISTORY OF ORIGINAL CORNER ESTABLISHMENT:

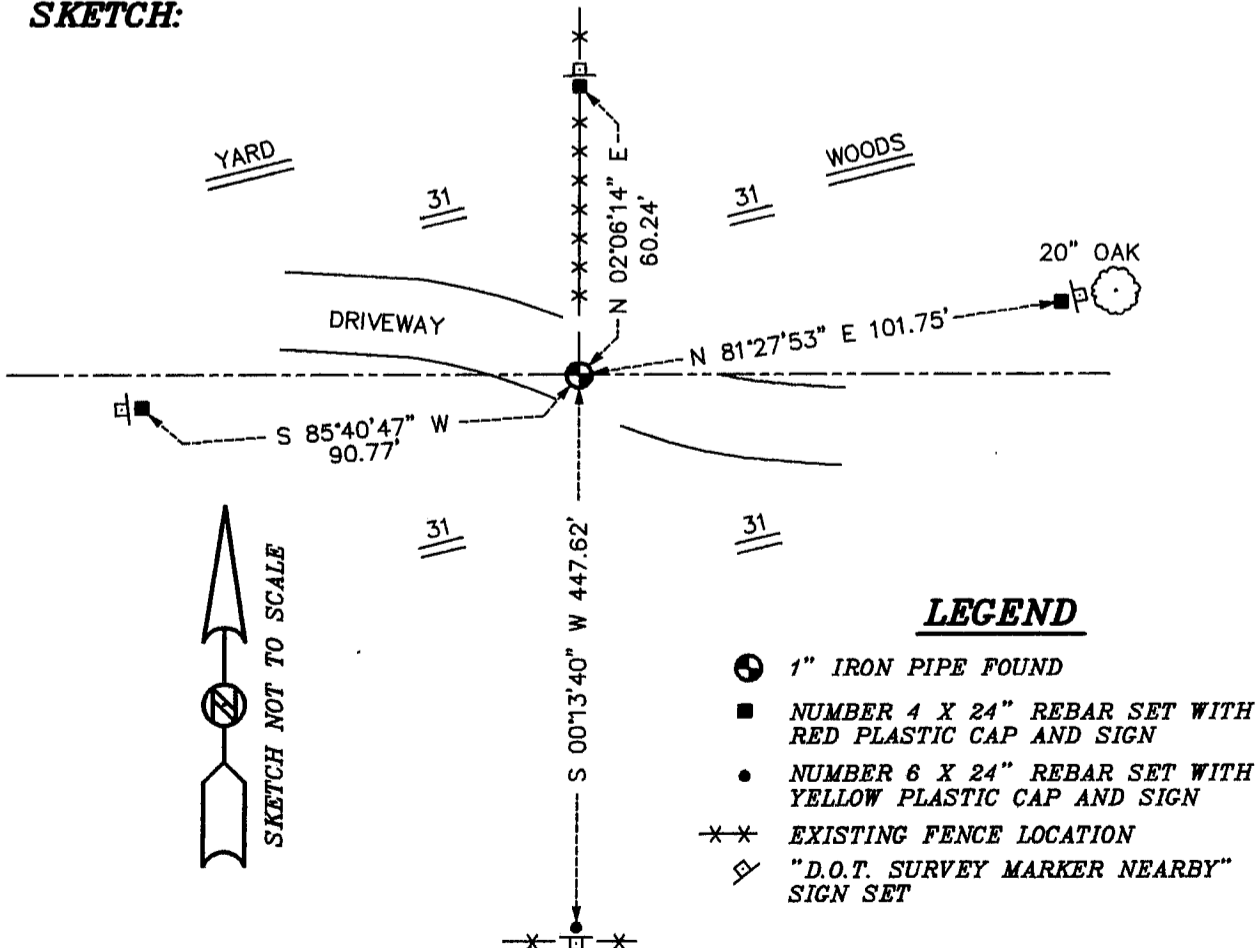
CORNER WAS NEVER ORIGINALLY SET.
JOHN ORTH SET A 1" IRON PIPE AT THIS LOCATION.

DESCRIPTION OF CORNER EVIDENCE FOUND:

I FOUND THE 1" IRON PIPE AS THE HISTORICAL LOCATION AND WAS USED FOR MANY AREA SURVEYS. VERIFIED THIS LOCATION USING E.D.M. AND G.P.S. METHODS.

DESCRIPTION OF CORNER AND WITNESS MONUMENTS, REFERENCES AND ACCESSORIES USED TO PERPETUATE THE ORIGINAL OR RE-ESTABLISHED LOCATION OF THIS CORNER:
WITNESS TO THE CORNER LOCATION: BOBBY SEDGWICK ; SHELBY BLINDERT

SKETCH:



LEGEND

- 1" IRON PIPE FOUND
- NUMBER 4 X 24" REBAR SET WITH RED PLASTIC CAP AND SIGN
- NUMBER 6 X 24" REBAR SET WITH YELLOW PLASTIC CAP AND SIGN
- *** EXISTING FENCE LOCATION
- "D.O.T. SURVEY MARKER NEARBY" SIGN SET