

GRANT COUNTY CERTIFIED LAND CORNER

CERTIFICATE:

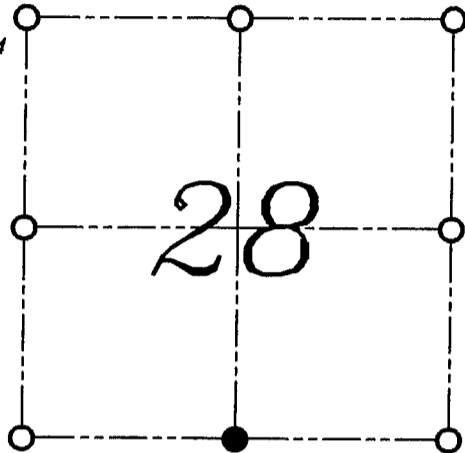
I, LARRY L. AUSTIN, DO HEREBY CERTIFY THAT ON TWELFTH DAY OF MAY, 1999, I FOUND OCCUPATIONAL EVIDENCE OF THE SOUTH 1/4 CORNER SECTION 28, TOWN 3 NORTH, RANGE 1 WEST, OF THE FOURTH PRINCIPAL MERIDIAN, AND I RE-ESTABLISHED SAID CORNER ACCORDING TO THE WISCONSIN STATUTES AS SHOWN AND DESCRIBED HEREON.

DATED THIS TWENTY-SECOND DAY OF MAY, 1999

Larry L. Austin
LARRY L. AUSTIN S-1903



CORNER NUMBER 108



● = CORNER LOCATION
SOUTH 1/4 CORNER OF SECTION 28, T 3 N R 1 W TOWN OF PLATTEVILLE

HISTORY OF ORIGINAL CORNER ESTABLISHMENT:

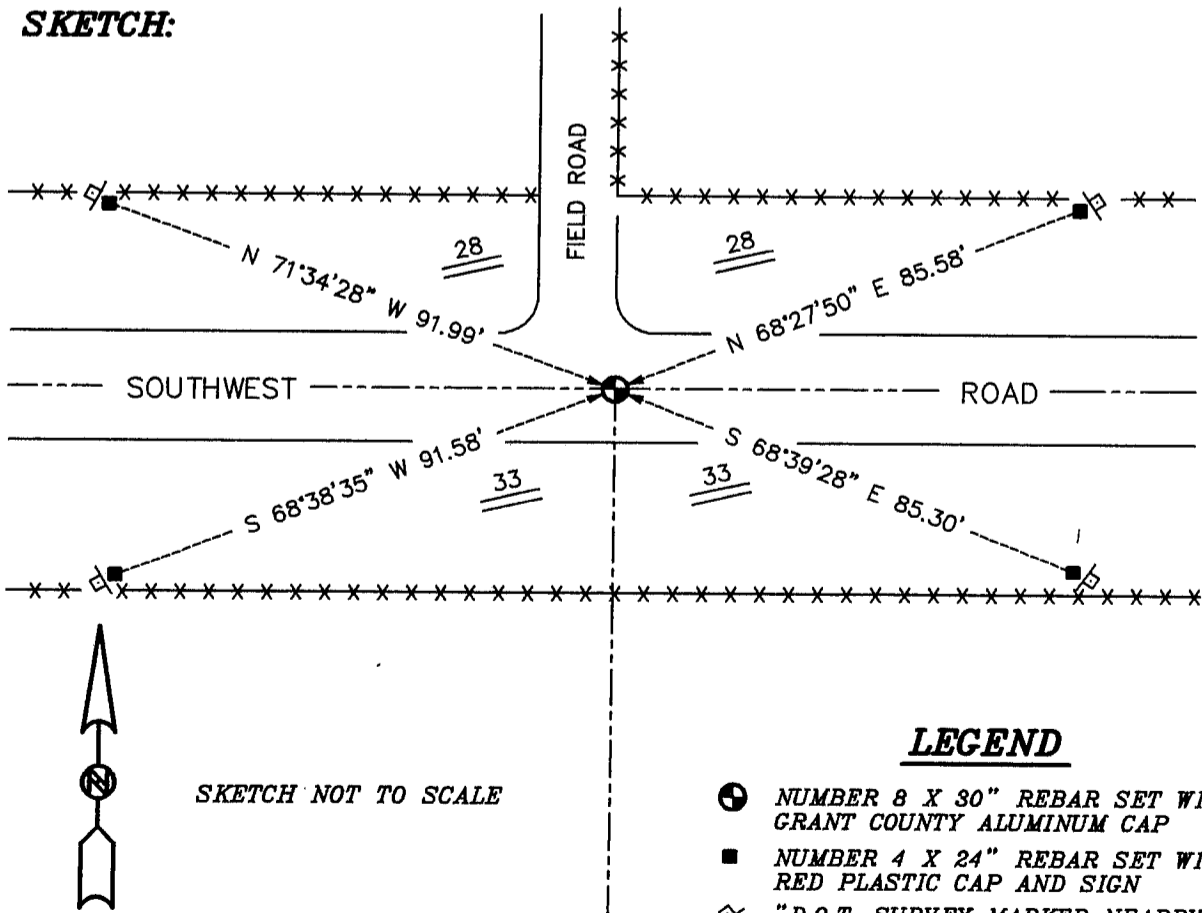
CORNER WAS SET IN 1832 BY ROBERT CLARK.

DESCRIPTION OF CORNER EVIDENCE FOUND:

I SET THE CORNER AT AN OCCUPIED LOCATION. (CENTERLINE OF ROAD AND FENCE NORTH) VERIFIED THIS LOCATION USING E.D.M. AND G.P.S. METHODS.

DESCRIPTION OF CORNER AND WITNESS MONUMENTS, REFERENCES AND ACCESSORIES USED TO PERPETUATE THE ORIGINAL OR RE-ESTABLISHED LOCATION OF THIS CORNER:
WITNESS TO THE CORNER LOCATION: BOBBY SEDGWICK ; SHELBY BLINDERT

SKETCH:



SKETCH NOT TO SCALE

LEGEND

- NUMBER 8 X 30" REBAR SET WITH GRANT COUNTY ALUMINUM CAP
- NUMBER 4 X 24" REBAR SET WITH RED PLASTIC CAP AND SIGN
- ⊠ "D.O.T. SURVEY MARKER NEARBY" SIGN SET
- **-** EXISTING FENCE LOCATION