

# GRANT COUNTY

## Survey Monument Record

TYPE OF MONUMENT 3/4" x 24" IRON BAR  
 STATE PLANE COORDINATES: N \_\_\_\_\_  
 E \_\_\_\_\_  
 ELEVATION — M.S.L. DATUM: \_\_\_\_\_  
 THETA ANGLE: \_\_\_\_\_  
 FIELD BOOK: 94-04  
 PAGE 6

CORNER NO. 107  
 SECTION 28  
 TOWN 3 N  
 RANGE 1 W  
 SE COR



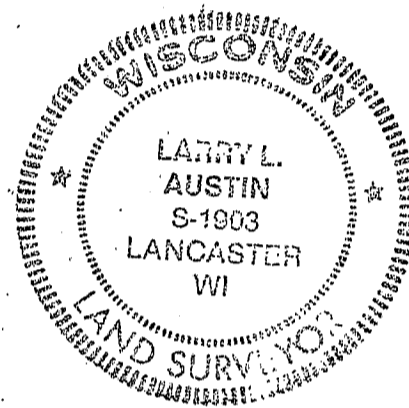
LOCATION  
 (Indicated by "●")

### BASIS FOR MONUMENT LOCATION

(Use reverse side if necessary)

Show info such as: History of corner, with reference to Vol. and pg., dates, surveyor; exact description of monument replaced; if location computed, by taped or EDM traverse; landowner, remarks, etc.

SEAL:



CORNER ORIGINALLY SET  
BY LUCIUS LYON IN 1832;  
NO RECORD OF THE CORNER  
FD SINCE ORIGINAL SURVEYS, EXCEPT  
THE LOCATION SHOWN C.T.H. "D"  
PLANS AT E OF TWP. ROAD & OCCUPATION  
TO THE SOUTH; THIS LOCATION  
VERIFIED BY EDM TRAVERSE  
OF THE AREA.

CERTIFIED CORRECT

*Larry L. Austin*  
 Registered Land Surveyor

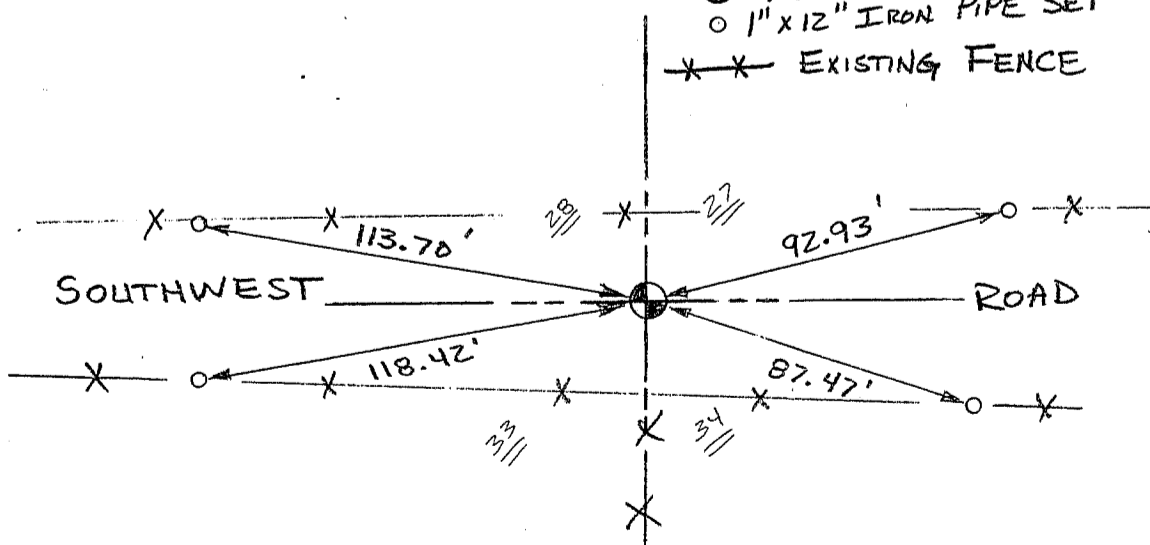
DATE: 2/7/94

### TIE SKETCH

Show at least three (3) ties and monument

### LEGEND

- ⊙ 3/4" x 24" IRON BAR SET
- 1" x 12" IRON PIPE SET
- X — X — EXISTING FENCE



NO SCALE