

**U.S. PUBLIC LAND SURVEY MONUMENT RECORD - GRANT COUNTY, WI**

Section 27, Town 3 North Range 1 West, Town of Platteville

**CERTIFICATE:**

I, Aaron J. Austin, do hereby certify that the corner location on this record was determined by me and/or under my direct supervision and that this U.S. Public Land Survey Monument Record is correct and complete to the best of my knowledge and belief.

Dated this 12th day of December, 2012.

Aaron J. Austin  
 Aaron J. Austin, S-2922



● = CORNER LOCATION

**HISTORY OF CORNER ESTABLISHMENT:**

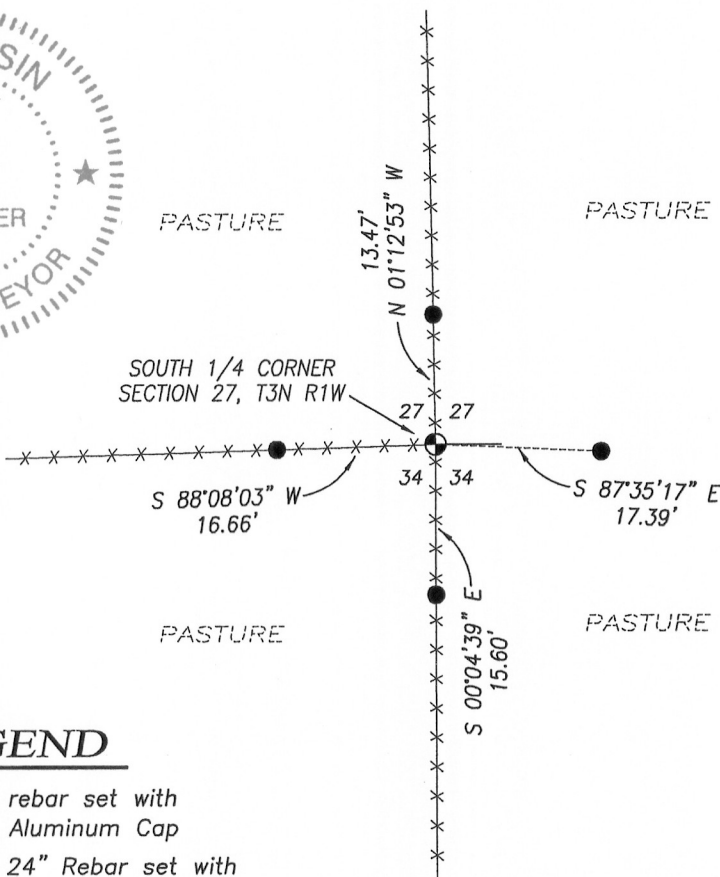
- In 1833, Lucius Lyon set the original corner.
- In 1849, Struntz measured to the corner on a Survey filed in Book "B", Page 154.
- In 1854, Overton reset the corner on a Survey filed in Book "B", Page 345.
- In 1855, Overton measured to the corner on a Survey filed in Book "B", Page 366.
- In 1892, Sampson measured to the corner on a Survey filed in Book "D", Page 230.
- No other record found for this corner.

**DESCRIPTION OF CORNER EVIDENCE FOUND:**

No evidence found of the corner or bearing trees. Corner was reset at an existing fence intersection. The location was verified by E.D.M. and G.P.S. methods.

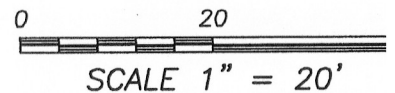
**DESCRIPTION OF CORNER AND WITNESS MONUMENTS**, references and accessories used to perpetuate the original or re-established location of this corner. Witnesses to corner location Bobby Sedgwick and Shelby Blindert.

**SKETCH:**



**LEGEND**

- No. 8 x 24" rebar set with Grant County Aluminum Cap
- Number 4 x 24" Rebar set with red plastic "TIE" cap
- x-x- Approximate existing fence



4211 HWY 81 E, LANCASTER, WI 53813  
 PHONE: 608-723-6363 FAX: 608-723-6702

JOB NO: 12s236  
 G:\T3NR1W\29DOT  
 H:\TIE\T3NR1W\106

FIELDBOOK: TDSR  
 DRAWN BY: AJ AUSTIN  
 CREW: BS-SB