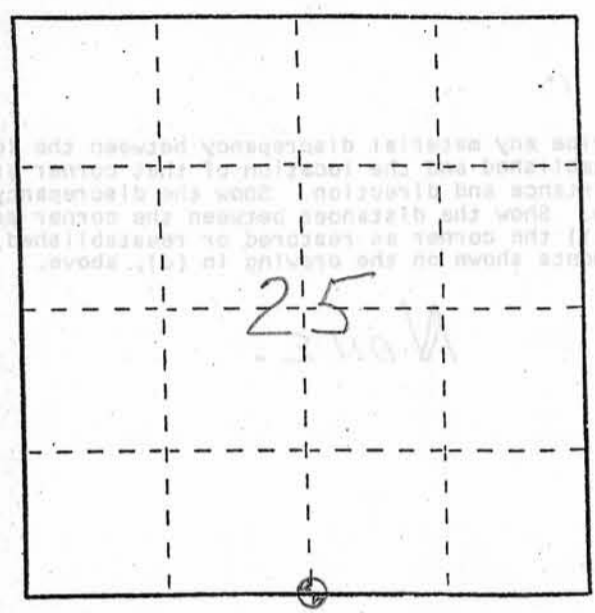


U. S. PUBLIC LAND SURVEY MONUMENT RECORD

INSTRUCTIONS: This record shall show the location of the corner and shall include all of the following nine elements (a through i).

- (a) Identify the corner by reference to the U.S. public land survey system.
- ⊕ = Corner monument restored.

SOUTH 1/4 CORNER OF
SECTION 25, TOWN 3
NORTH, RANGE 1 WEST,
PLATTEVILLE TOWNSHIP,
GRANT COUNTY, WISC.



- (b) Describe any record evidence, monument evidence, occupational evidence, testimonial evidence or any other material evidence you considered, and whether the monument was found or placed.

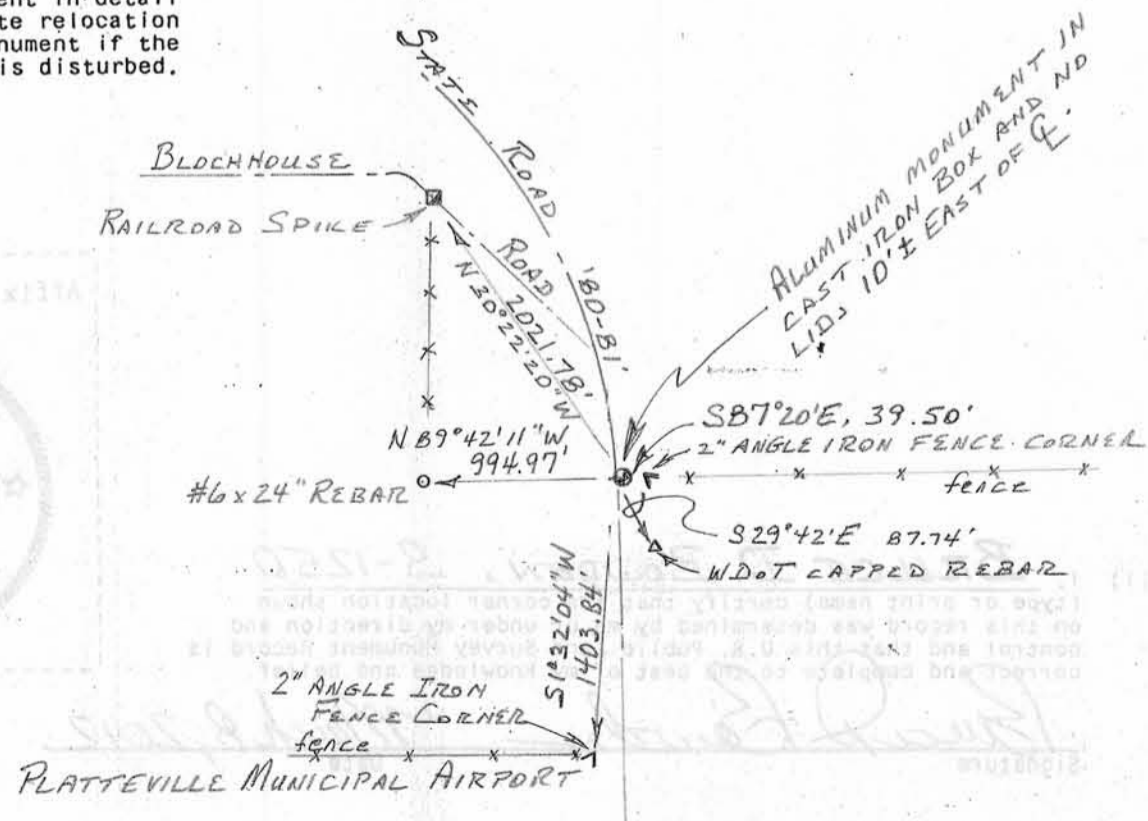
MONUMENT FOUND AS SHOWN ON VARIOUS SURVEYS, TIE SHEET AND HIGHWAY PLANS. ADDITIONAL TIES WERE LOCATED AND DEFINED.

- (c) In the plan view drawing below, provide reference ties to at least 4 witness monuments, or, if the location is within a municipality, to at least 2 witness monuments. (Witness monuments shall be made of concrete, natural stone, iron or other equally durable material. Describe witness monuments.

- (d) Show a plan view drawing depicting the relevant monuments and reference ties which is sufficient in detail to enable accurate relocation of the corner monument if the corner monument is disturbed. Indicate north.



NOT TO SCALE

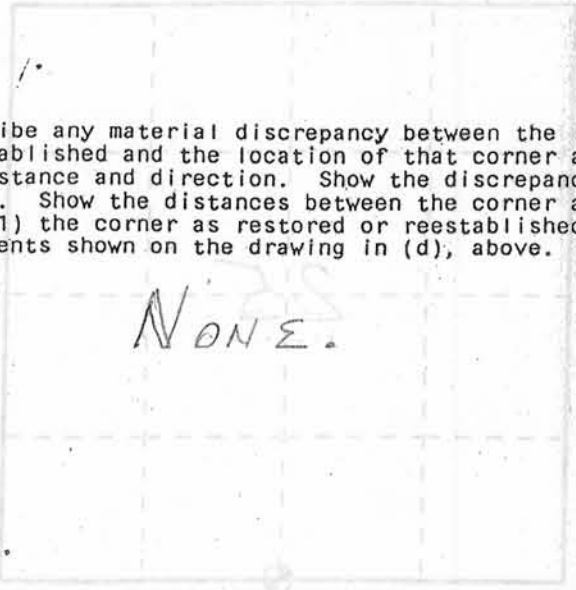


U. S. PUBLIC LAND SURVEY MONUMENT RECORD

This record shall show the location of the corner and shall include all of the following nine elements (a through i).

(a) Identify the corner by reference to the U.S. public land survey system.
(b) Corner monument restored.

(e) Describe any material discrepancy between the location of the corner as restored or reestablished and the location of that corner as previously restored or reestablished by distance and direction. Show the discrepancy on the plan view drawing under (d), above. Show the distances between the corner as previously restored or reestablished and (1) the corner as restored or reestablished, and (2) to at least 2 of the witness monuments shown on the drawing in (d), above.



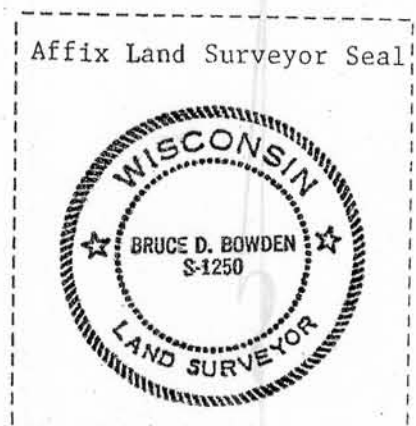
(f) Was the corner restored through acceptance of (1) an obliterated evidence location, or, (2) a found perpetuated location?

(2) A FOUND PERPETUATED LOCATION

(g&h) Was the corner reestablished through lost corner proportionate methods? If so, show the method, including the directions and distances to other public land survey corners used as evidence or used for proportioning in determining the corner location?

No.

(b) Show a plan view drawing depicting the relevant monuments and reference lines which is sufficient in detail to enable accurate relocation of the corner monument if the corner monument is disturbed. Indicate north.



(i) I, BRUCE D. BOWDEN, S-1250 (type or print name) certify that the corner location shown on this record was determined by me or under my direction and control and that this U.S. Public Land Survey Monument Record is correct and complete to the best of my knowledge and belief.

Bruce D. Bowden Signature March 8, 2012 Date

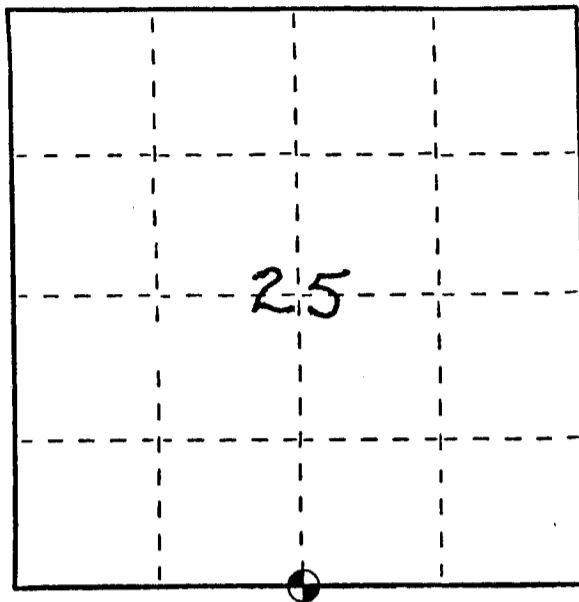
U. S. PUBLIC LAND SURVEY MONUMENT RECORD

INSTRUCTIONS: This record shall show the location of the corner and shall include all of the following nine elements (a through i).

(a) Identify the corner by reference to the U.S. public land survey system.

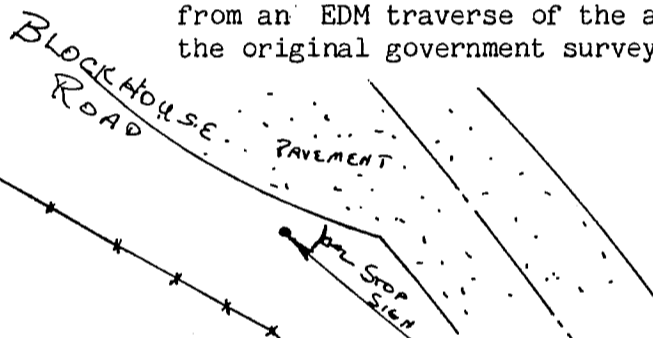
○ = Corner monument restored.

South 1/4 corner of Section 25,
Town 3 North, Range 1 West,
Platteville Township, Grant
County, Wisconsin.



(b) Describe any record evidence, monument evidence, occupational evidence, testimonial evidence or any other material evidence you considered, and whether the monument was found or placed.

Monument set from existing physical evidence and proportionate measurements from an EDM traverse of the area. There is no record of this corner since the original government survey.

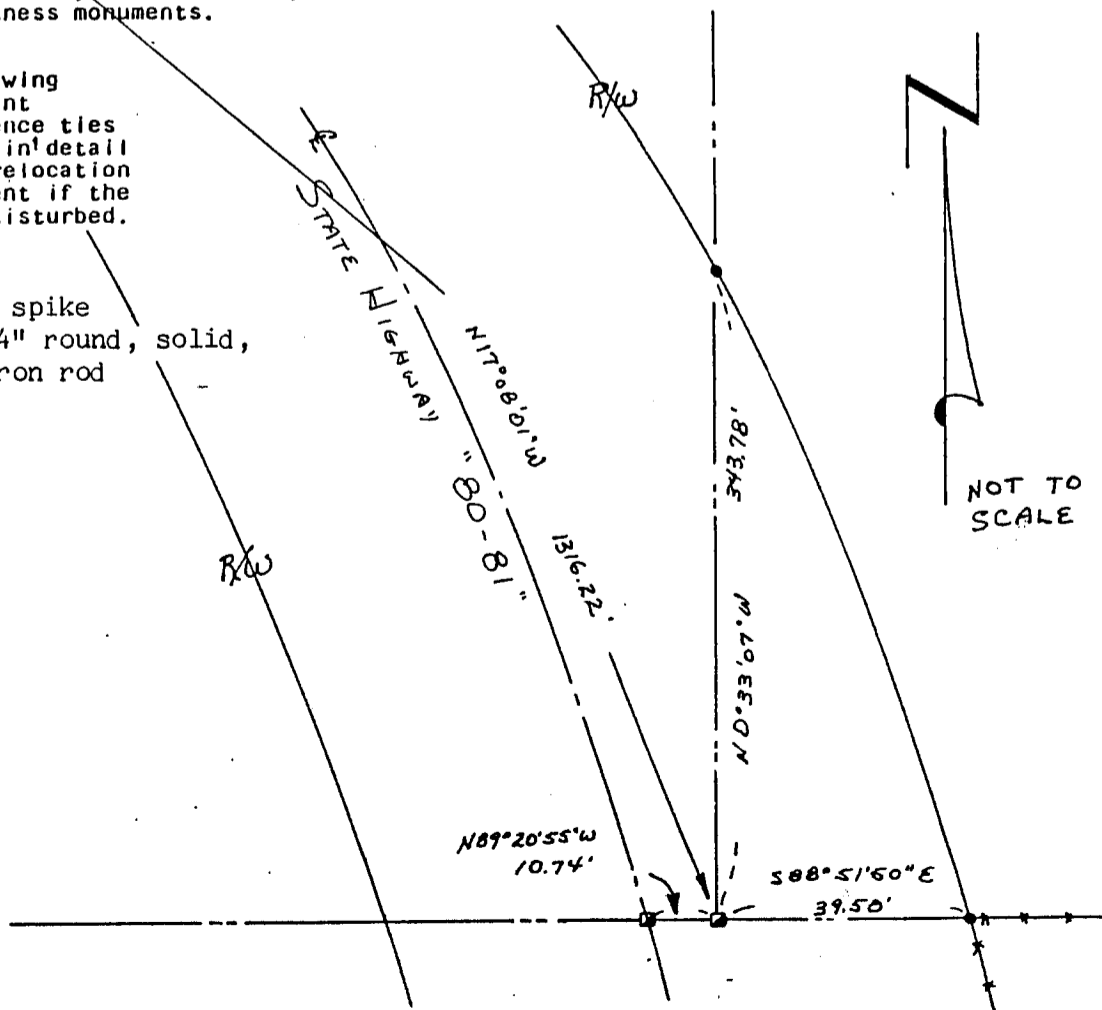


(c) In the plan view drawing below, provide reference ties to at least 4 witness monuments, or, if the location is within a municipality, to at least 2 witness monuments. (Witness monuments shall be made of concrete, natural stone, iron or other equally durable material, ~~except~~ wood.) Describe witness monuments.

(d) Show a plan view drawing depicting the relevant monuments and reference ties which is sufficient in detail to enable accurate relocation of the corner monument if the corner monument is disturbed. Indicate north.

LEGEND

- Railroad spike
- 3/4" x 24" round, solid, iron rod
- **** Fence



NOT TO SCALE

SEP 22 1987

[Handwritten signature]

(e) Describe any material discrepancy between the reestablished and the location of that corner by distance and direction. Show the discrepancy above. Show the distances between the corner and (1) the corner as restored or reestablished monuments shown on the drawing in (d), above.

corner as restored or restored or reestablished view drawing under (d), restored or reestablished at least 2 of the witness

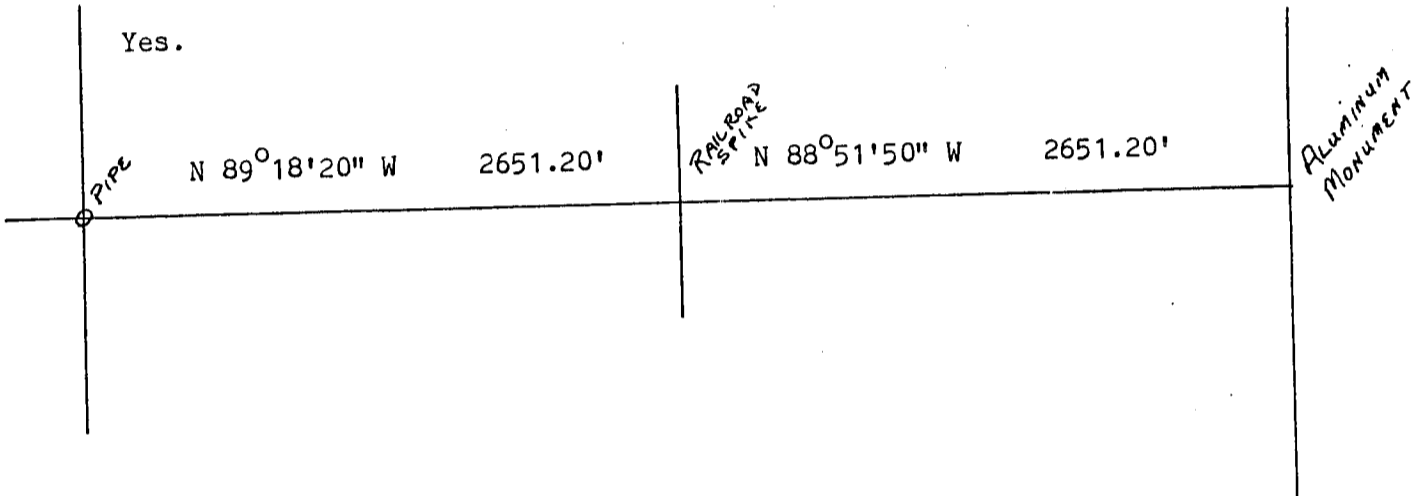
None

(f) Was the corner restored through acceptance of (1) an obliterated evidence location, or, (2) a found perpetuated location?

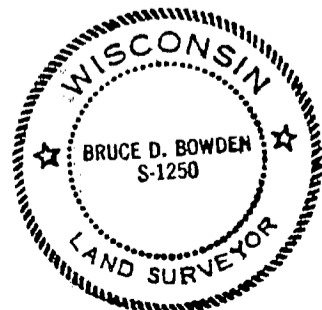
(1) An obliterated evidence location

(g&h) Was the corner reestablished through lost corner proportionate methods? If so, show the method, including the directions and distances to other public land survey corners used as evidence or used for proportioning in determining the corner location?

Yes.



Affix Land Surveyor Seal



(1) I, Bruce D. Bowden, R.L.S. - 1250 (type or print name) certify that the corner location shown on this record was determined by me or under my direction and control and that this U.S. Public Land Survey Monument Record is correct and complete to the best of my knowledge and belief.

Bruce D. Bowden
Signature

Sept 7, 1987
Date