

U.S. PUBLIC LAND SURVEY MONUMENT RECORD

(AS REQUIRED BY s.A-E 7.08, WI. ADM. CODE)

HISTORY OF ORIGINAL CORNER ESTABLISHMENT AND SUBSEQUENT RESTORATIONS AND DESCRIPTION OF ANY RECORD, MONUMENT, OCCUPATION, TESTIMONIAL OR OTHER EVIDENCE CONSIDERED

THE CORNER WAS PREVIOUSLY SET AND TIE SHEET DATED 11-28-94 IN GRANT CO.

COORDINATES ARE ESTABLISHED TO THE CORNER AND WITNESS TIES AS SHOWN BELOW BEARING REFERENCE AND COORDINATES ARE LAFAYETTE COUNTY COORDINATE SYSTEM NAD 83(91) ENGLISH SYSTEM

LAFAYETTE COUNTY COORDINATES
 NORTHING 180318.20
 EASTING 400182.95

CORNER WAS: (CHECK ALL THAT APPLY)

- RESTORED THROUGH ACCEPTANCE OF AN OBLITERATED EVIDENCE LOCATION
- RESTORED THROUGH ACCEPTANCE OF A FOUND PERPETUATED LOCATION CONSIDERED A LOST CORNER AND REESTABLISHED THROUGH LOST CORNER PROPORTIONATE METHODS (INCLUDE A PLAN VIEW DRAWING SHOWING BEARING & DISTANCE TO OTHER PUBLIC LAND SURVEY CORNERS)
- USED FOR PROPORTIONING AND DETERMINING THE CORNER LOCATION
- RESTORED OR REESTABLISHED IN A LOCATION THAT DIFFERS FROM A PREVIOUS RESTORATION OR REESTABLISHMENT (INCLUDE A PLAN VIEW DRAWING AND INDICATE WHAT WAS SET AND/OR FOUND)

Describe the monument and accessories used to perpetuate the location of the corner. (include a plan view drawing and indicated what was set and/or found)

LEGEND:

- △ SET 5/8"φ REBAR TIE
- FOUND STONE MONUMENT
- ⊗ FOUND REBAR WITH LAF. CO. ALUM CAP
- FOUND 1 1/4"φ REBAR BURRIED 12" DEEP IN CORN FIELD
- () RECORDED AS
- ⊗ FOUND "PK" NAIL
- x—x— FENCE
- ▲ FOUND 1" IRON PIPE
- ∅ POWER POLE

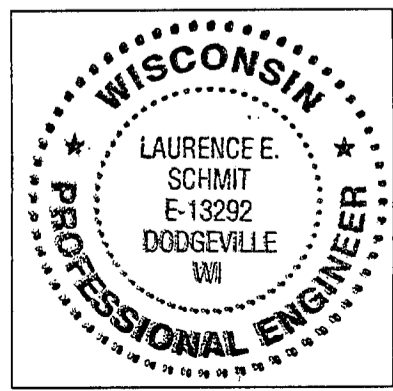
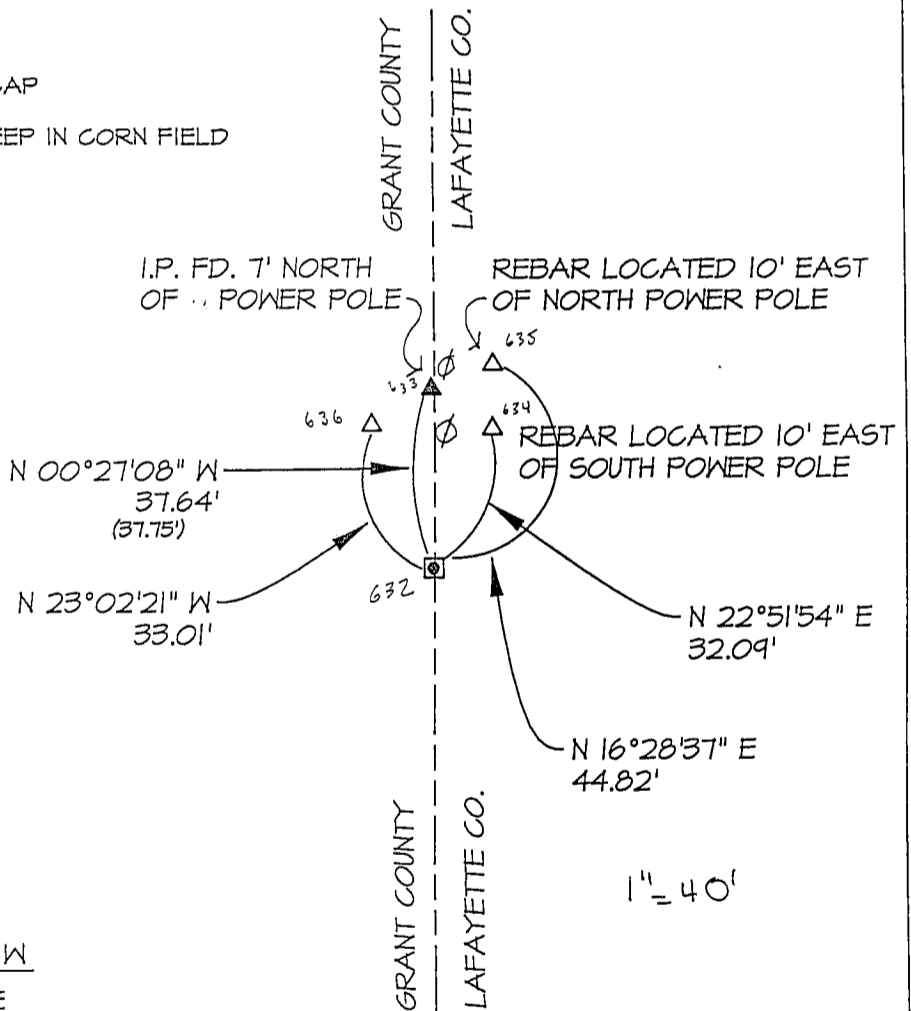
SECT <u>13</u>	SECT <u>18</u>
TOWN <u>3</u> N	TOWN <u>3</u> N
RANGE <u>1W</u>	RANGE <u>1E</u>
SECT <u>24</u>	SECT <u>19</u>
TOWN <u>3</u> N	TOWN <u>3</u> N
RANGE <u>1W</u>	RANGE <u>1E</u>

● = LOCATION OF CORNER
 THE ___ COR. OF SECT 25 T3 N, R 1W
 THE 1/4 COR. OF SECT 19 T3 N, R 1E
 THE ___ COR. OF SECT 30 T3 N, R 1E
 THE E1/4 COR. OF SECT 24 T3 N, R 1W

LAFAYETTE & GRANT COUNTY, WISCONSIN
 JOB ID: OTS-006 BOOK #: 2007-2 P.16

I, LAURENCE E SCHMIT CERTIFY THAT THE CORNER LOCATION SHOWN ON THIS RECORD WAS DETERMINED BY ME OR UNDER MY DIRECTION AND CONTROL AND THAT THIS U.S. PUBLIC LAND SURVEY MONUMENT RECORD IS CORRECT AND COMPLETE TO THE BEST OF MY KNOWLEDGE AND BELIEF.

Laurence E Schmit 5-8-07
 SIGNATURE DATE



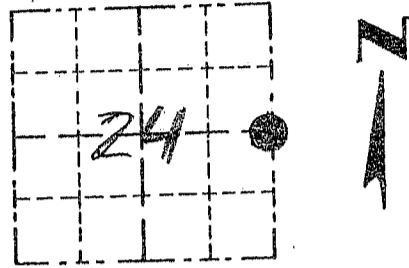
LAND SURVEYORS SEAL
 INDEX NUMBER 74

GRANT COUNTY

Survey Monument Record

TYPE OF MONUMENT 1/4" X 24" IRON ROD PLACED
STATE PLANE COORDINATES: N _____
E _____
ELEVATION — M.S.L. DATUM: _____
THETA ANGLE: _____
FIELD BOOK: 94-17
PAGE _____

CORNER NO. _____
SECTION 24
TOWN 3 N
RANGE 1 W



LOCATION
(Indicated by ●)

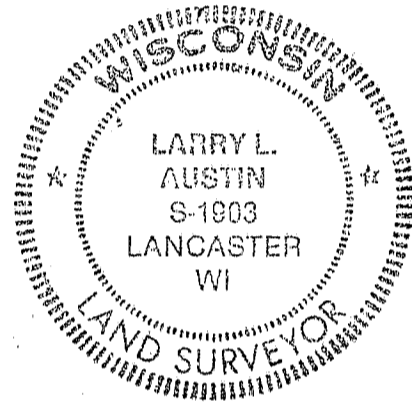
BASIS FOR MONUMENT LOCATION

(Use reverse side if necessary)

Show info such as: History of corner, with reference to Vol. and pg., dates, surveyor; exact description of monument replaced; if location computed, by taped or EDM traverse; landowner, remarks, etc.

SEAL:

NO RECORD OF CORNER FOUND SINCE THE ORIGINAL SURVEYS; CORNER WAS SET ON LINE & MIDWAY BETWEEN NE & SE CORNERS OF SECTION; EDM TRAVERSE METHODS USED.



CERTIFIED CORRECT

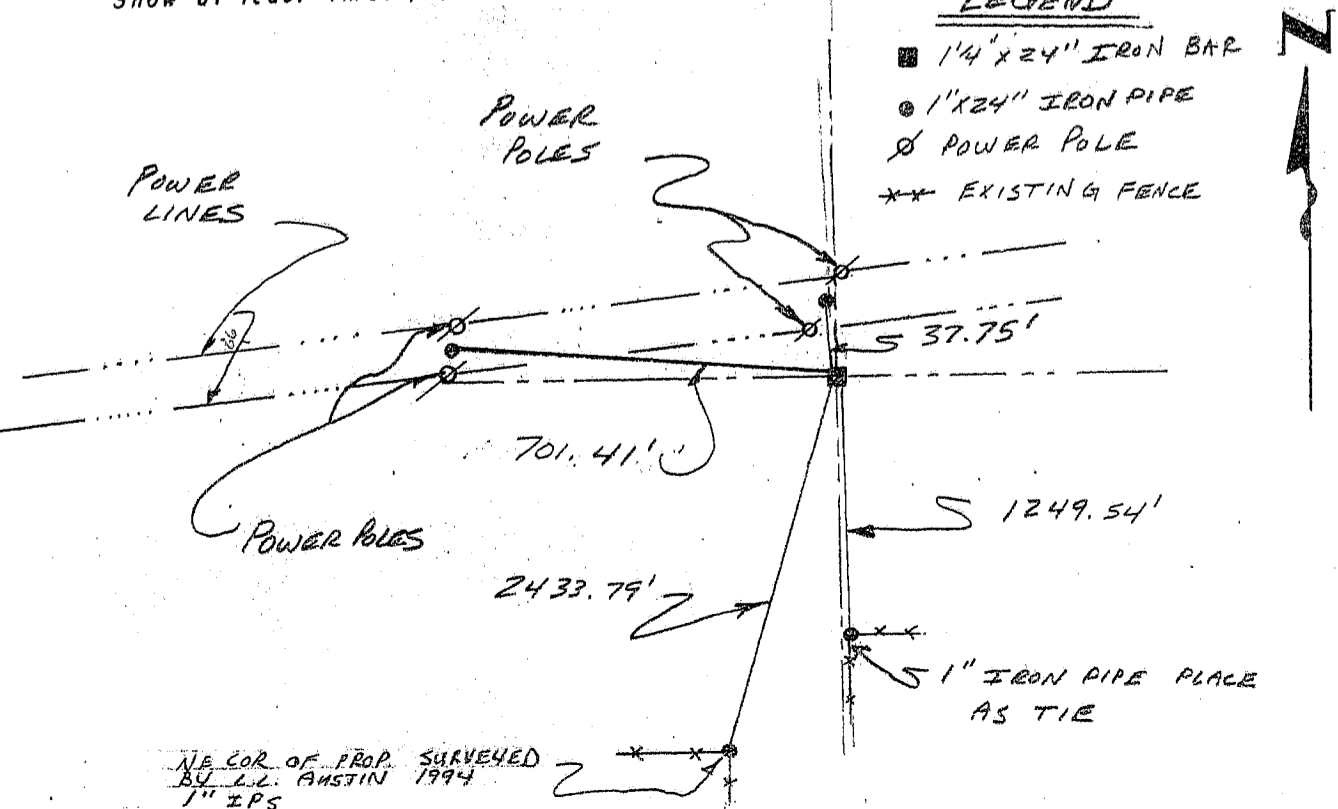
Larry L. Austin
Registered Land Surveyor
DATE: 11/28/94

TIE SKETCH

Show at least three (3) ties and monument

LEGEND

- 1/4" X 24" IRON BAR
- 1" X 24" IRON PIPE
- ⊗ POWER POLE
- XX EXISTING FENCE



NE COR. OF PROP. SURVEYED
BY L.L. AUSTIN 1994
1" IPS