

GRANT COUNTY CERTIFIED LAND CORNER

CERTIFICATE:

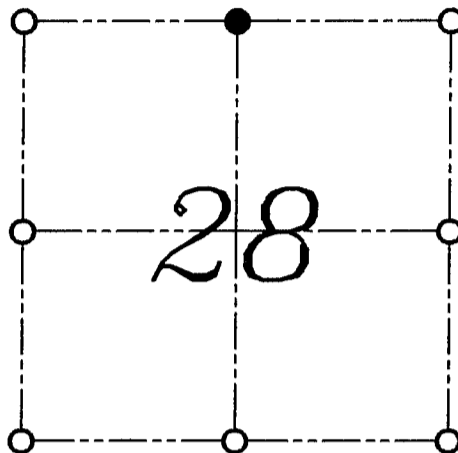
I, LARRY L. AUSTIN, DO HEREBY CERTIFY THAT ON TWELFTH DAY OF MAY, 1999, I FOUND NO EVIDENCE OF THE NORTH 1/4 CORNER OF SECTION 28, TOWN 3 NORTH, RANGE 1 WEST, OF THE FOURTH PRINCIPAL MERIDIAN, AND I RE-ESTABLISHED SAID CORNER ACCORDING TO THE WISCONSIN STATUTES AS SHOWN AND DESCRIBED HEREON.

DATED THIS TWENTY-SECOND DAY OF MAY, 1999

Larry L. Austin
LARRY L. AUSTIN S-1903



CORNER NUMBER 88



● = CORNER LOCATION

NORTH 1/4 CORNER OF
SECTION 28, T 3 N R 1 W
TOWN OF PLATTEVILLE

HISTORY OF ORIGINAL CORNER ESTABLISHMENT:

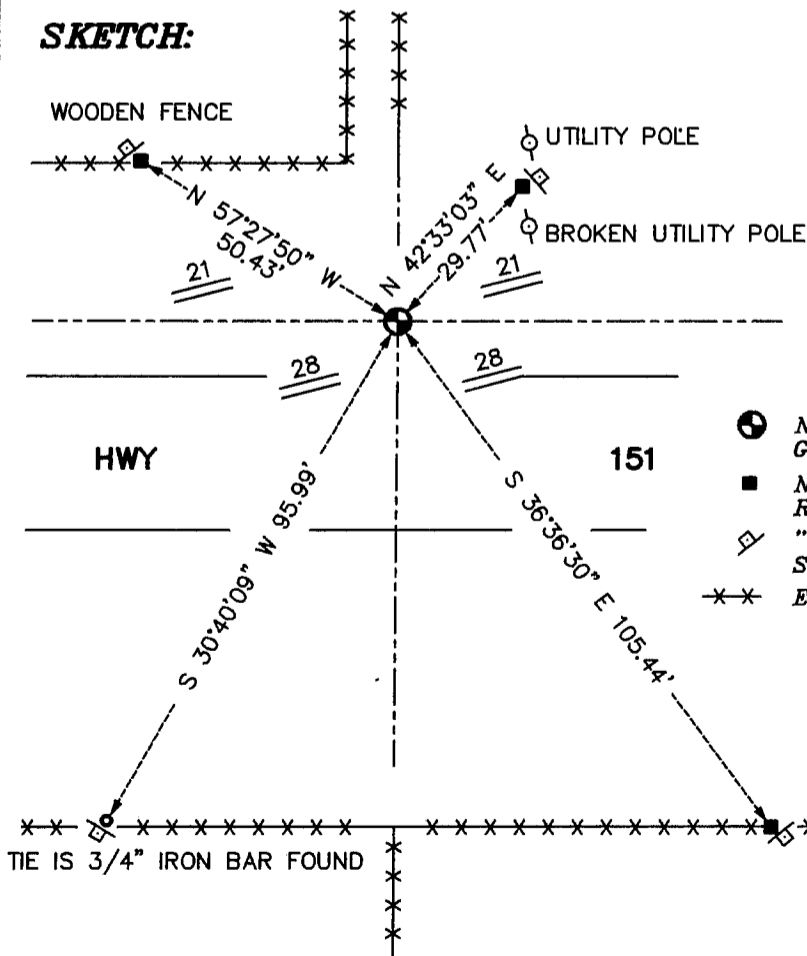
CORNER WAS SET IN 1832 BY ROBERT CLARK.

DESCRIPTION OF CORNER EVIDENCE FOUND:

I SET THE CORNER ONLINE WITH FENCE SOUTH AND ONLINE BETWEEN THE NORTHWEST AND NORTHEAST CORNERS OF SECTION 28. VERIFIED THIS LOCATION USING E.D.M. AND G.P.S. METHODS.

DESCRIPTION OF CORNER AND WITNESS MONUMENTS, REFERENCES AND ACCESSORIES USED TO PERPETUATE THE ORIGINAL OR RE-ESTABLISHED LOCATION OF THIS CORNER:
WITNESS TO THE CORNER LOCATION: BOBBY SEDGWICK ; SHELBY BLINDERT

SKETCH:



LEGEND

- NUMBER 8 X 30" REBAR SET WITH GRANT COUNTY ALUMINUM CAP
- NUMBER 4 X 24" REBAR SET WITH RED PLASTIC CAP AND SIGN
- ◇ "D.O.T. SURVEY MARKER NEARBY" SIGN SET
- **-** EXISTING FENCE LOCATION

