

GRANT COUNTY CERTIFIED LAND CORNER

CORNER NUMBER 89

CERTIFICATE:

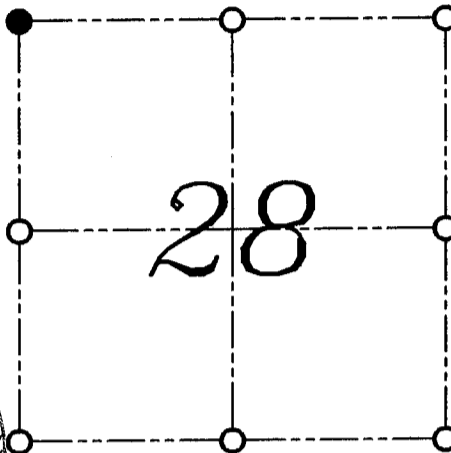
I, LARRY L. AUSTIN, DO HEREBY CERTIFY THAT ON TWELFTH DAY OF MAY, 1999, I FOUND EVIDENCE OF THE NORTHWEST CORNER OF SECTION 28, TOWN 3 NORTH, RANGE 1 WEST, OF THE FOURTH PRINCIPAL MERIDIAN, AND I RE-ESTABLISHED SAID CORNER ACCORDING TO THE WISCONSIN STATUTES AS SHOWN AND DESCRIBED HEREON.

DATED THIS TWENTY-SECOND DAY OF MAY, 1999

Larry L. Austin
LARRY L. AUSTIN S-1903



SEAL



● = CORNER LOCATION
NORTHWEST CORNER OF
SECTION 28, T 3 N R 1 W
TOWN OF PLATTEVILLE

HISTORY OF ORIGINAL CORNER ESTABLISHMENT:

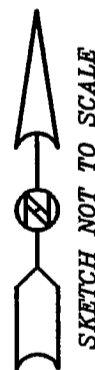
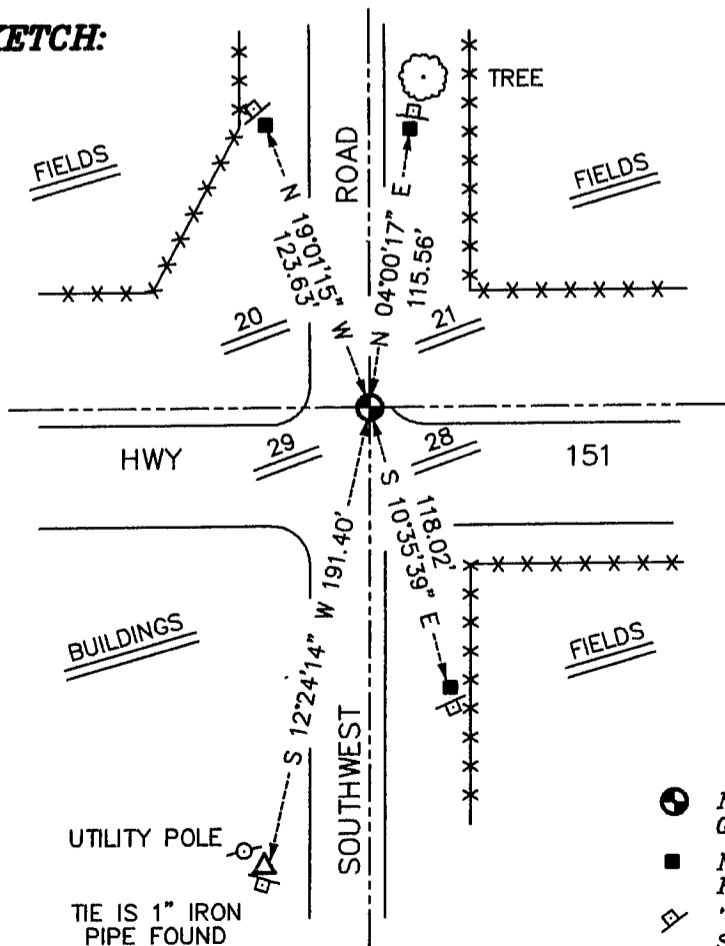
CORNER WAS SET IN 1832 BY ROBERT CLARK. GEO STUNTZ WAS AT THE CORNER IN 1847. BRUCE BOWDEN FOUND A RAILROAD SPIKE AT THIS LOCATION IN 1985.

DESCRIPTION OF CORNER EVIDENCE FOUND:

I ACCEPTED THE RAILROAD SPIKE LOCATION AFTER AN E.D.M. AND G.P.S. TRAVERSE OF THE AREA. I REPLACED THE RAILROAD SPIKE WITH A NUMBER 8 BAR WITH ALUMINUM CAP. VERIFIED THIS LOCATION USING E.D.M. AND G.P.S. METHODS.

DESCRIPTION OF CORNER AND WITNESS MONUMENTS, REFERENCES AND ACCESSORIES USED TO PERPETUATE THE ORIGINAL OR RE-ESTABLISHED LOCATION OF THIS CORNER:
WITNESS TO THE CORNER LOCATION: BOBBY SEDGWICK ; SHELBY BLINDERT

SKETCH:



LEGEND

- NUMBER 8 X 30" REBAR SET WITH GRANT COUNTY ALUMINUM CAP
- NUMBER 4 X 24" REBAR SET WITH RED PLASTIC CAP AND SIGN
- ⚡ "D.O.T. SURVEY MARKER NEARBY" SIGN SET
- **-** EXISTING FENCE LOCATION