

U.S. PUBLIC LAND SURVEY MONUMENT RECORD – GRANT COUNTY, WI

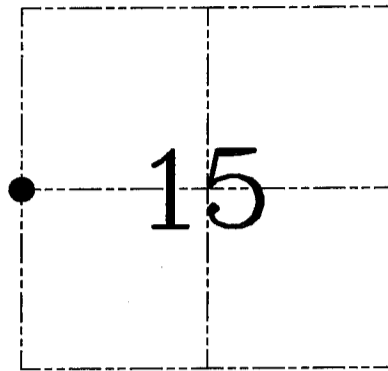
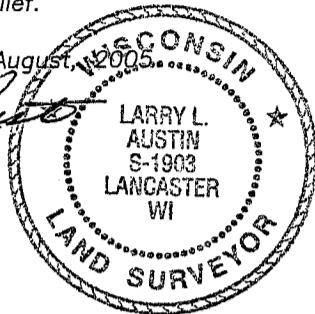
Section 15, Town 3 North Range 1 West, Town of Platteville

CERTIFICATE

I, Larry L. Austin, do hereby certify that the corner location on this record was determined by me and/or under my direct supervision and that this U.S. public land survey monument record is correct and complete to the best of my knowledge and belief.

Dated this 10th day of August, 2005.

Larry L. Austin
Larry L. Austin S-1903



● = CORNER LOCATION

HISTORY OF CORNER ESTABLISHMENT

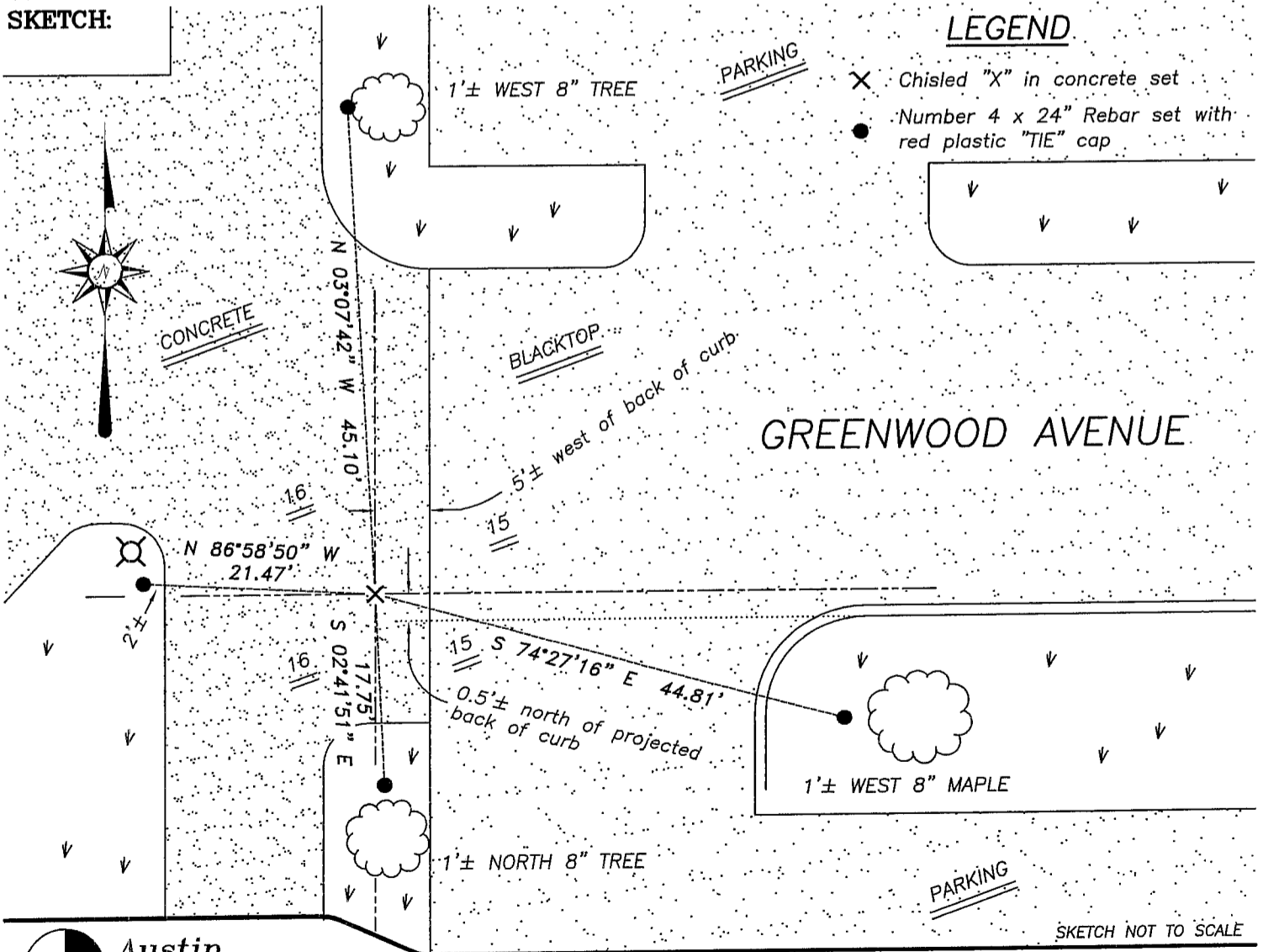
Corner was originally set in 1833 by Clark. Hawleys Addition, Henrys Addition, and Rountrees Western Addition all tied to the West line of Section 15 or West 1/4 corner of Section 15. No recent records of the corner location were found.

DESCRIPTION OF CORNER EVIDENCE FOUND

I used the above previously stated plats to establish Northing. Easting was established between the Northwest Corner and Southwest Corners of Section 15. Verified this location using EDM & GPS methods.

DESCRIPTION OF CORNER AND WITNESS MONUMENTS, references and accessories used to perpetuate the original or re-established location of this corner. Witnesses to corner location Bobby Sedgwick & Brad Digman & Shane Austin

SKETCH:



LEGEND

- X Chisled "X" in concrete set
- Number 4 x 24" Rebar set with red plastic "TIE" cap



Austin Engineering LLC

4211 HWY 81 E, LANCASTER, WI 53813
PHONE 608-723-6363 FAX 608-723-6702

JOB NUMBER 05S050
FIELDBOOK: TDSR, 2512
G:\GRANTDOT\T3NR1W
H:\TIE\T3NR1W\57

DRAWN BY: SW AUSTIN
APPROVED: LL AUSTIN