

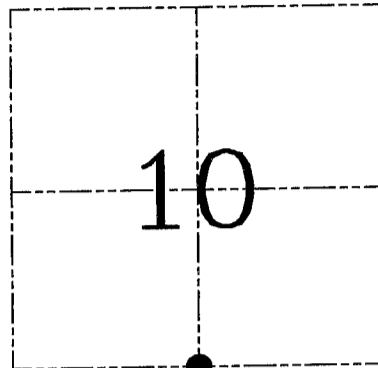
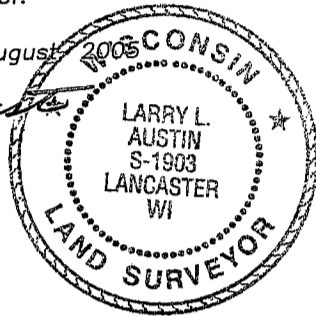
U.S. PUBLIC LAND SURVEY MONUMENT RECORD – GRANT COUNTY, WI
Section 10, Town 3 North Range 1 West, Town of Platteville

CERTIFICATE

I, Larry L. Austin, do hereby certify that the corner location on this record was determined by me and/or under my direct supervision and that this U.S. public land survey monument record is correct and complete to the best of my knowledge and belief.

Dated this 10th day of August 2005

Larry L. Austin
 Larry L. Austin S-1903



● = CORNER LOCATION

HISTORY OF CORNER ESTABLISHMENT

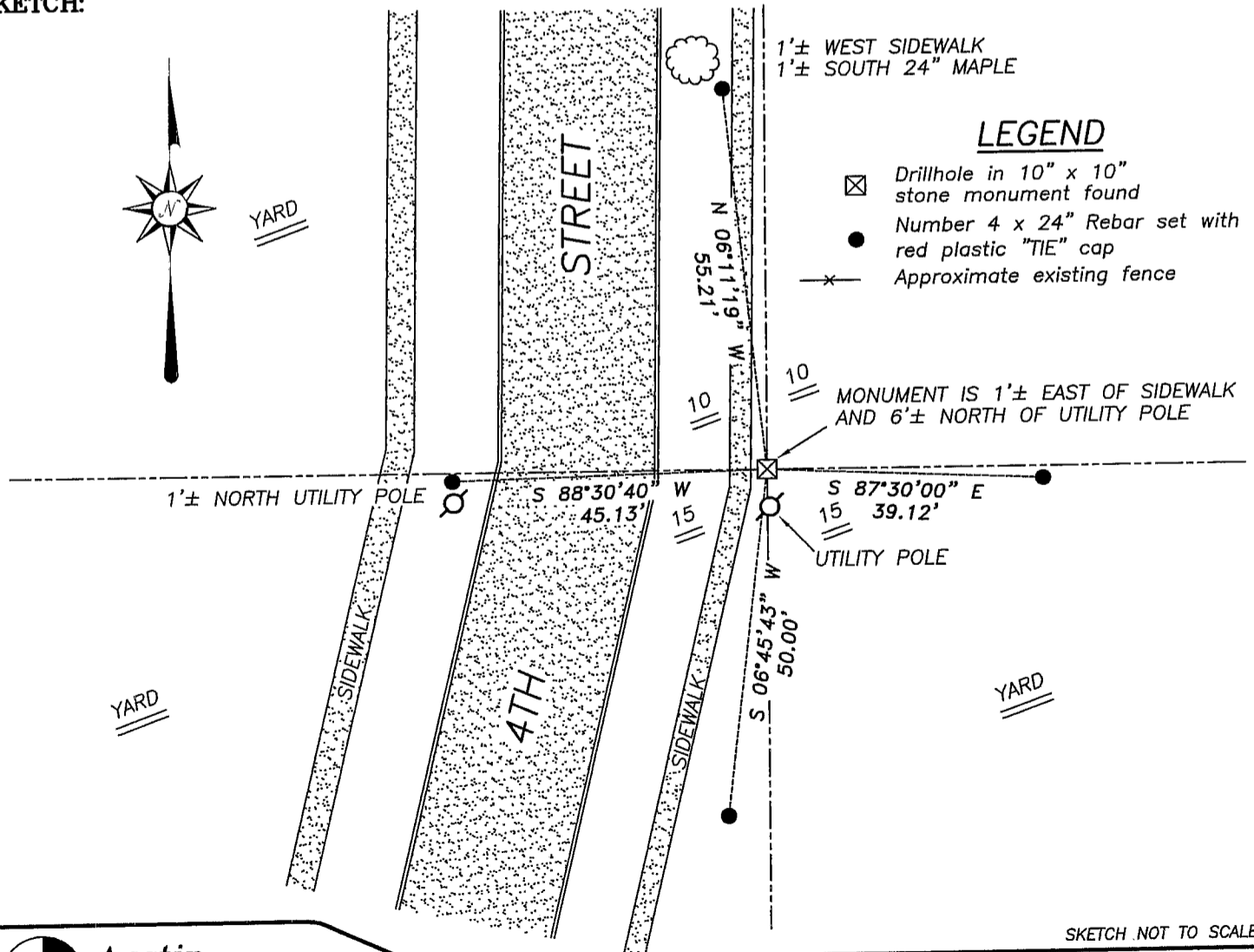
Corner was originally set in 1833 by Clark. No record with who placed the stone monument. Many recent surveys have accepted and used this stone on the platting of Platteville.

DESCRIPTION OF CORNER EVIDENCE FOUND

I found and accepted the stone monument.
 Verified this location using EDM & GPS methods.

DESCRIPTION OF CORNER AND WITNESS MONUMENTS, references and accessories used to perpetuate the original or re-established location of this corner. Witnesses to corner location Bobby Sedgwick & Brad Digman & Shane Austin

SKETCH:



SKETCH NOT TO SCALE



Austin Engineering LLC

4211 HWY 81 E, LANCASTER, WI 53813
 PHONE 608-723-6363 FAX 608-723-6702

JOB NUMBER 05S050
 FIELDBOOK: TDSR, 2512
 G:\GRANTDOT\T3NR1W
 H:\TIE\T3NR1W\46

DRAWN BY: SW AUSTIN
 APPROVED: LL AUSTIN