

GRANT COUNTY CERTIFIED LAND CORNER

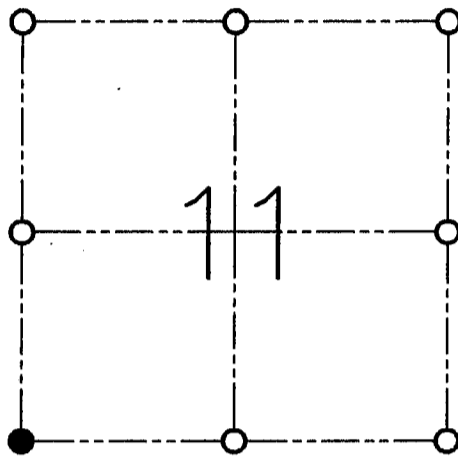
CORNER NO. 45

CERTIFICATE:

I, LARRY L. AUSTIN, DO HEREBY CERTIFY THAT ON THIRTY-FIRST DAY OF MARCH, 1999, I FOUND EVIDENCE OF THE SOUTHWEST CORNER SECTION 11, TOWN 3 NORTH, RANGE 1 WEST, OF THE FOURTH PRINCIPAL MERIDIAN, AND I RE-ESTABLISHED SAID CORNER ACCORDING TO THE WISCONSIN STATUTES AS SHOWN AND DESCRIBED HEREON.

DATED THIS TWENTY-NINTH DAY OF APRIL, 1999

Larry L. Austin
LARRY L. AUSTIN S-1903



● = CORNER LOCATION

**SOUTHWEST CORNER
SECTION 11, T 3 N R 1 W
TOWN OF PLATTEVILLE**

HISTORY OF ORIGINAL CORNER ESTABLISHMENT:

CORNER WAS SET IN 1833 BY ROBERT CLARK. CORNER WAS TIED TO BY DALE DIXON IN 1972.

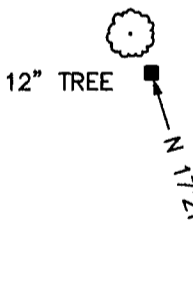
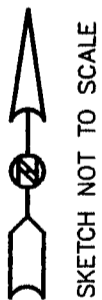
DESCRIPTION OF CORNER EVIDENCE FOUND:

I USED MONUMENTS OF THE DALE DIXON SURVEY TO RE-ESTABLISHED THE CORNER LOCATION. VERIFIED THIS LOCATION USING E.D.M. AND G.P.S. METHODS.

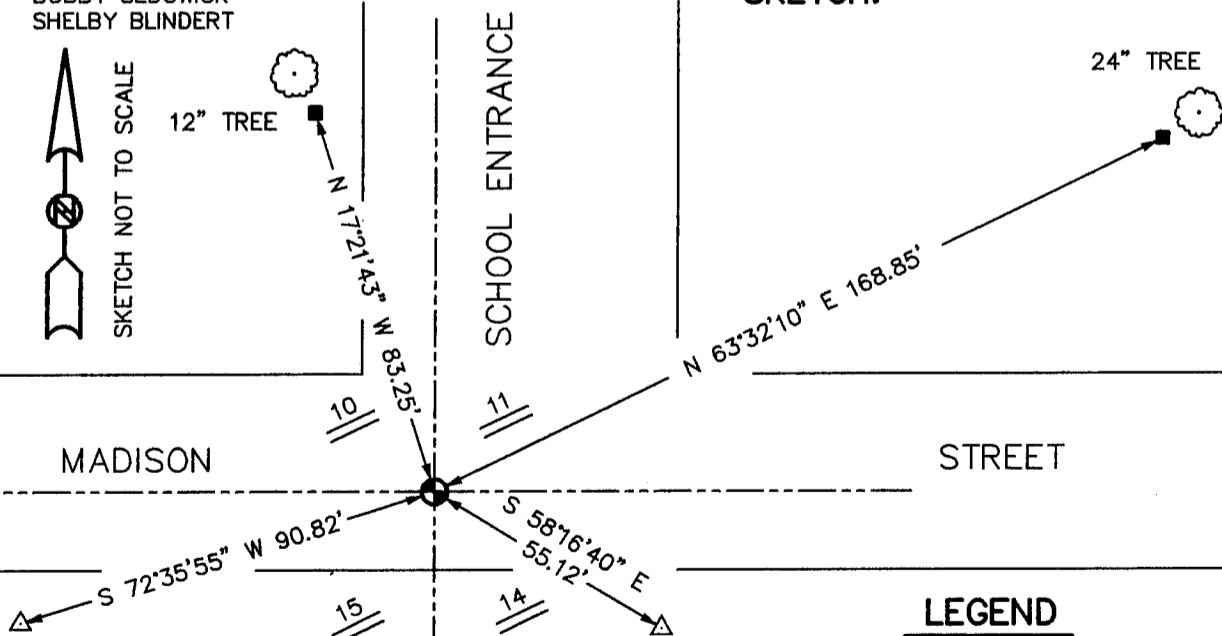
DESCRIPTION OF CORNER AND WITNESS MONUMENTS, REFERENCES AND ACCESSORIES USED TO PERPETUATE THE ORIGINAL OR RE-ESTABLISHED LOCATION OF THIS CORNER:

WITNESS TO THE CORNER LOCATION:

BOBBY SEDGWICK
SHELBY BLINDERT



SKETCH:



LEGEND

- NO. 8 X 30" REBAR SET WITH GRANT COUNTY ALUMINUM CAP
- NO. 4 X 24" REBAR SET WITH RED PLASTIC CAP
- △ 1" IRON PIPE FOUND