

Survey Monument Record

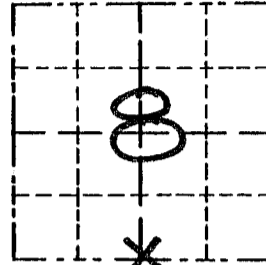
TYPE OF MONUMENT 3/4" X 24" IRON BAR
 STATE PLANE COORDINATES: N W/ CAP
 E _____

ELEVATION — M.S.L. DATUM: _____
 THETA ANGLE: _____
 FIELD BOOK: 96-09
 PAGE _____

CORNER NO. 50
 SECTION 8
 TOWN 3N
 RANGE 1W

BASIS FOR MONUMENT LOCATION
 (Use reverse side if necessary)

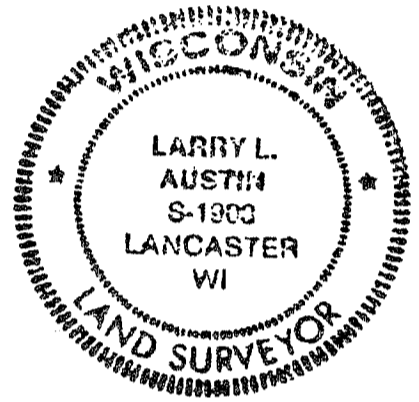
CORNER SET IN 1833 BY ROBERT CLARK, NO RECORD OF CORNER FOUND SINCE ORIGINAL SURVEYS, CORNER SET ONLINE BETWEEN SOUTHWEST CORNER AND THE SOUTH EAST CORNER FOR NORTH/SOUTH LOCATION, CORNER SET IN NORTH/SOUTH FENCE FOR EAST/WEST LOCATION, VERIFIED ITS LOCATION BY EDM TRAVERSE OF AREA.



LOCATION
 (Indicated by "X")



SEAL:



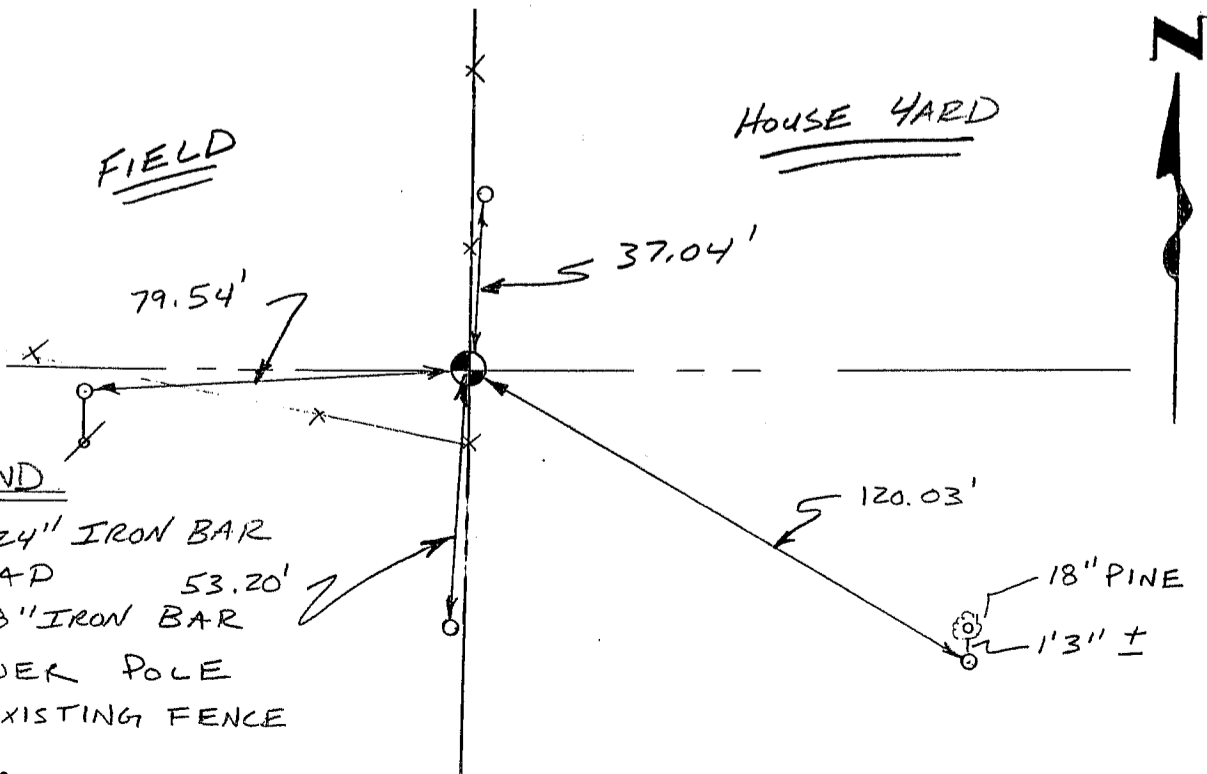
CERTIFIED CORRECT

Larry L. Austin
 Registered Land Surveyor

DATE: 8/27/96

TIE SKETCH

Show at least three (3) ties and monument



LEGEND

- ⊕ 3/4" X 24" IRON BAR W/ CAP
- 12" X 18" IRON BAR
- o POWER POLE
- XX EXISTING FENCE