

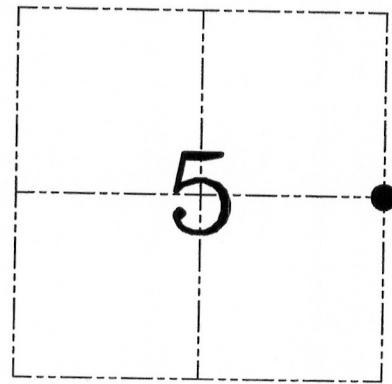
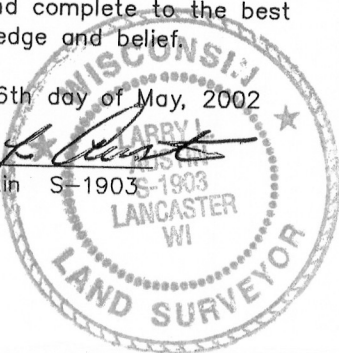
**U.S. PUBLIC LAND SURVEY MONUMENT RECORD – GRANT COUNTY, WI**  
**Section 5, Town 3 North, Range 1 West, Town of Platteville**

**CERTIFICATE**

I, Larry L. Austin, do hereby certify that the corner location on this record was determined by me and/or under my direct supervision and that this U.S. public land survey monument record is correct and complete to the best of my knowledge and belief.

Dated this 16th day of May, 2002

*Larry L. Austin*  
 Larry L. Austin S-1903-1903



● = CORNER LOCATION

**HISTORY OF CORNER ESTABLISHMENT**

Corner was originally set in 1833 by Robert Clark. In 1891 Sampson tied to the corner with no mention of monument. Janiak set a No. 6 rebar at this location in 1990. No other record of the corner was found.

**DESCRIPTION OF CORNER EVIDENCE FOUND**

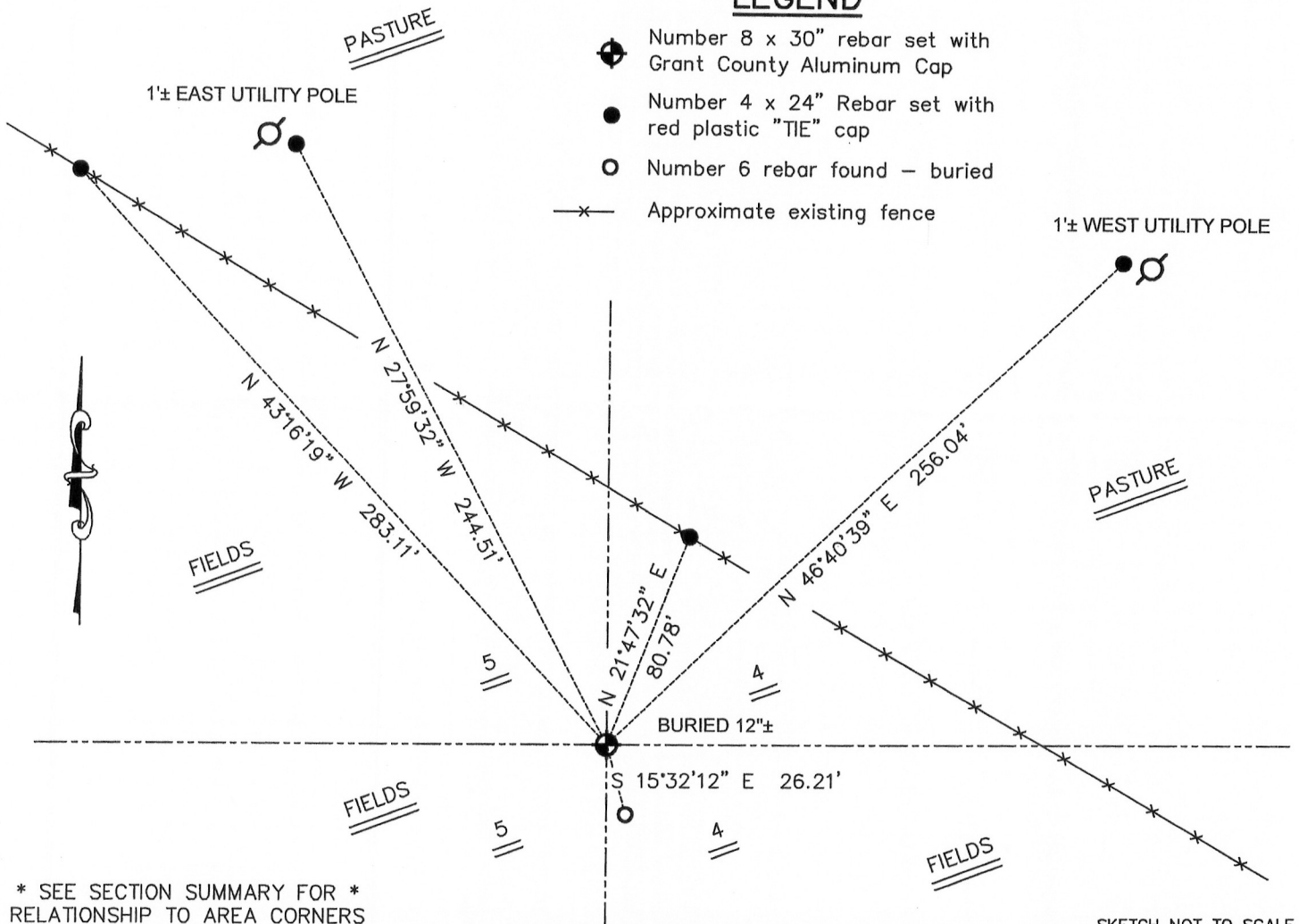
I located the No. 6 iron bar and did not accept it. The location was not as shown on the plat. While calculating he used a closing distance of 19.62 chains, which is not correct. I reset the corner proportionately between the Northeast and Southeast corners. Verified this location using EDM & GPS methods.

**DESCRIPTION OF CORNER AND WITNESS MONUMENTS**, references and accessories used to perpetuate the original or re-established location of this corner. Witnesses to the corner location B. Sedgwick & S. Blindert & B. Digman

**SKETCH:**

**LEGEND**

- Number 8 x 30" rebar set with Grant County Aluminum Cap
- Number 4 x 24" Rebar set with red plastic "TIE" cap
- Number 6 rebar found – buried
- x— Approximate existing fence



\* SEE SECTION SUMMARY FOR \*  
 RELATIONSHIP TO AREA CORNERS

SKETCH NOT TO SCALE

**AUSTIN ENGINEERING, LLC**

4211 HWY 81 EAST, LANCASTER, WI 53813  
 PHONE 608-723-6363 FAX 608-723-6702

FIELDBOOK: SDR33, 2112  
 G: \T4NR1W\T4N  
 C: \SWA\TIE\T3NR1W\16  
 CREW: BS-SB-SA-BD

DRAWN BY: SW AUSTIN  
 APPROVED: LL AUSTIN

**CORNER NUMBER 16**

**JUN 20 2011**