

MAY 25 1990

GRANT COUNTY

GOVERNMENT CORNER RECORD

EAST 1/4 CORNER, SECTION 4, TOWNSHIP 3 NORTH, RANGE 1 EAST - WEST,
TOWN, CITY OR VILLAGE OF PLATTEVILLE, RICHLAND CO.

TYPE OF MONUMENT: 1-1/2" IRON PIPE ELEVATION - M.S.L. DATUM _____

STATE PLANE COORDINATES: N _____

WISCONSIN SOUTH ZONE E _____

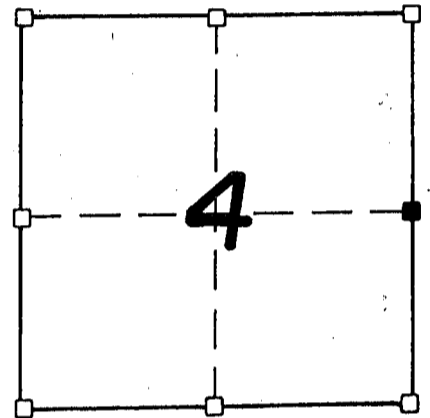
WITNESSES TO CORNER LOCATION

SEAN M. WALSH

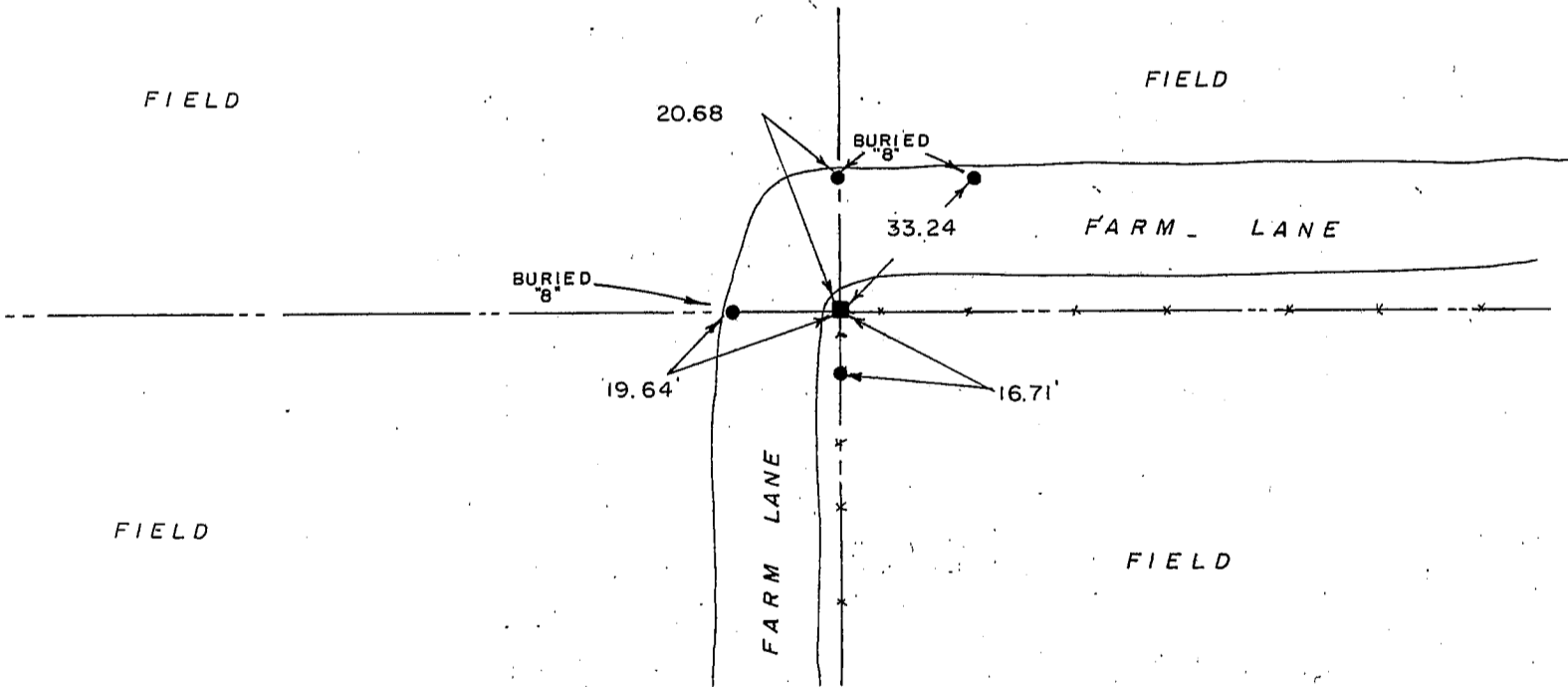
PATRICK J. DEDERICH



SECTION 4, T 3 N, R 1 W
TOWN OF PLATTEVILLE



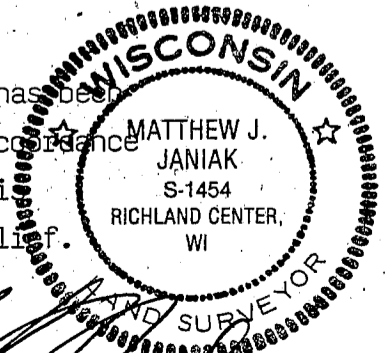
TIE SKETCH
(SHOW ALL HELPFUL FEATURES)



SURVEYOR'S CERTIFICATE
STATE OF WISCONSIN)
RICHLAND COUNTY)SS

SEAL S-1454

I, Matthew J. Janiak, DO HEREBY CERTIFY THAT the above corner has been
accepted and perpetuated under my direction and supervision in accordance
with the information contained hereon and that this information is
correct and true to the best of my information, knowledge and belief.



DATED THIS 15TH DAY OF MAY, 19 90

Matthew J. Janiak
REGISTERED LAND SURVEYOR

CORNER CODE
1117