

MAY 25 1990

# GRANT COUNTY

## GOVERNMENT CORNER RECORD

SOUTH 1/4 CORNER, SECTION 4, TOWNSHIP 3 NORTH, RANGE 1 ~~EAST~~ - WEST,  
TOWN, ~~CITY OR VILLAGE~~ OF PLATTEVILLE, RICHLAND CO.

TYPE OF MONUMENT: STONE FOUND ELEVATION - M.S.L. DATUM \_\_\_\_\_

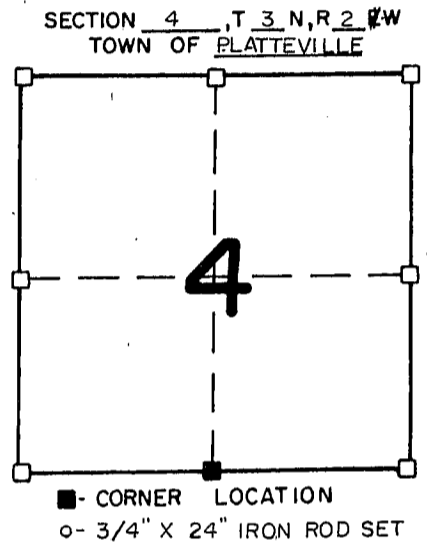
STATE PLANE COORDINATES: N \_\_\_\_\_

WISCONSIN SOUTH ZONE E \_\_\_\_\_

WITNESSES TO CORNER LOCATION

SEAN M. WALSH

PATRICK J. DEDERICH



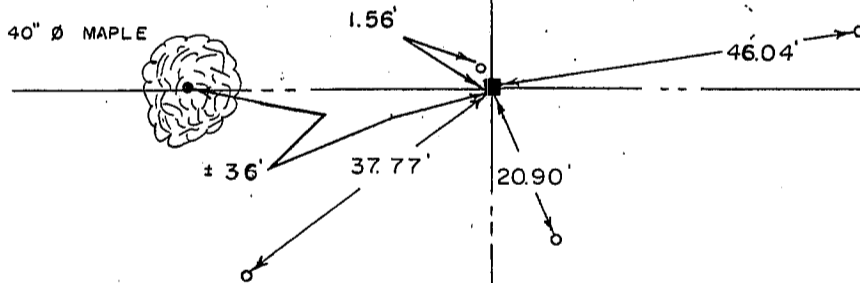
TIE SKETCH  
(SHOW ALL HELPFUL FEATURES)

PASTURE

PASTURE

PASTURE

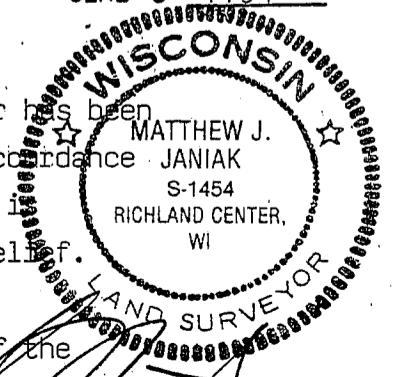
PASTURE



SURVEYOR'S CERTIFICATE  
STATE OF WISCONSIN)  
RICHLAND COUNTY ) SS

SEAL S-1454

I, Matthew J. Janiak, DO HEREBY CERTIFY THAT the above corner has been  
accepted and perpetuated under my direction and supervision in accordance  
with the information contained hereon and that this information is  
true and correct to the best of my information, knowledge and belief.  
This stone was found broken though both pieces of it were still  
together both pieces matched the dimensions given on a survey of the  
North line of section 9, of 1874.



DATED THIS 16TH DAY OF May, 1990

REGISTERED LAND SURVEYOR

CORNER CODE

