

MAY 25 1990

RL

GRANT COUNTY

GOVERNMENT CORNER RECORD

SOUTHEAST CORNER, SECTION 4, TOWNSHIP 3 NORTH, RANGE 1 ~~EAST~~ - WEST,
TOWN, CITY OR VILLAGE OF PLATTEVILLE, RICHLAND CO.

TYPE OF MONUMENT: 1" IRON PIPE FOUND ELEVATION - M.S.L. DATUM _____

STATE PLANE COORDINATES: N _____

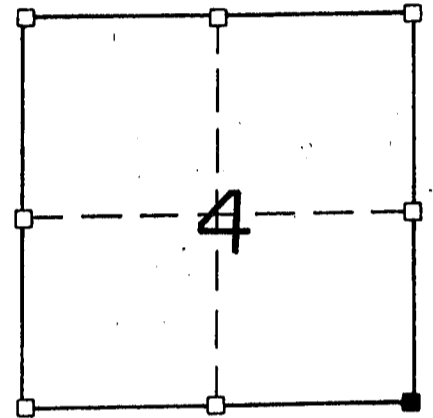
WISCONSIN SOUTH ZONE E _____

WITNESSES TO CORNER LOCATION

SEAN M. WALSH

PATRICK J. DEDERICH

SECTION 4, T 3 N, R 1 ~~EW~~
TOWN OF PLATTEVILLE

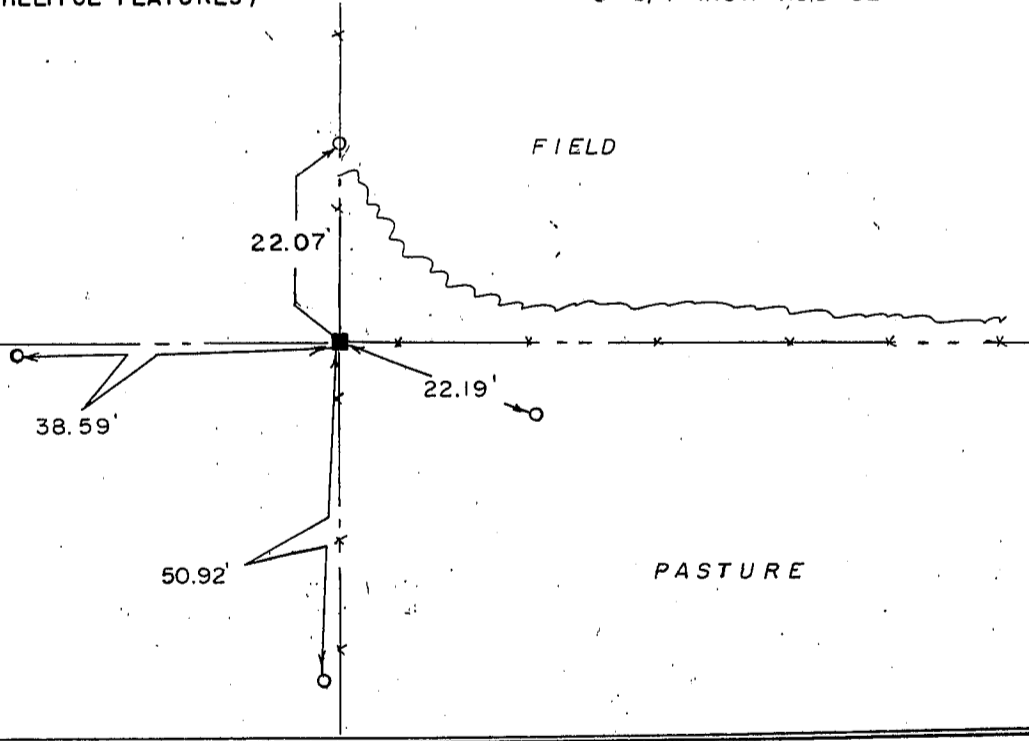


NORTH

TIE SKETCH (SHOW ALL HELPFUL FEATURES)

PASTURE

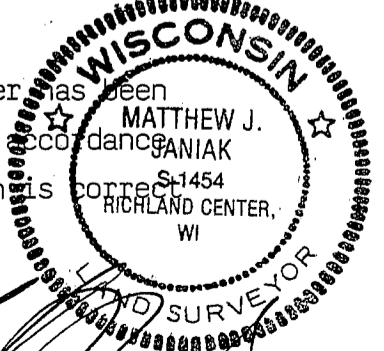
FIELD



SURVEYOR'S CERTIFICATE
STATE OF WISCONSIN)
RICHLAND COUNTY)SS

SEAL S-1454

I, Matthew J. Janiak, DO HEREBY CERTIFY THAT the above corner has been
accepted and perpetuated under my direction and supervision in accordance
with the information contained hereon and that this information is correct
to the best of my information, knowledge and belief.



DATED THIS 16TH DAY OF MAY, 19 90

REGISTERED LAND SURVEYOR

CORNER CODE

