

U.S. PUBLIC LAND SURVEY MONUMENT RECORD - GRANT COUNTY, WI

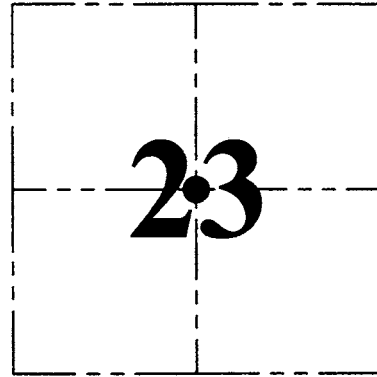
Section 23, Town 3 North Range 1 West, Town of Platteville

CERTIFICATE:

I, Aaron J. Austin, Wisconsin Professional Land Surveyor, do hereby certify that the corner location on this record was determined by me and/or under my direct supervision and that this U.S. Public Land Survey Monument Record is correct and complete to the best of my knowledge and belief.

Dated this 4th day of August, 2015.

Aaron J. Austin, S-2922
 Lancaster, WI
 Wisconsin Professional Land Surveyor



● = CORNER LOCATION

HISTORY OF CORNER ESTABLISHMENT:

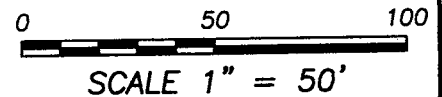
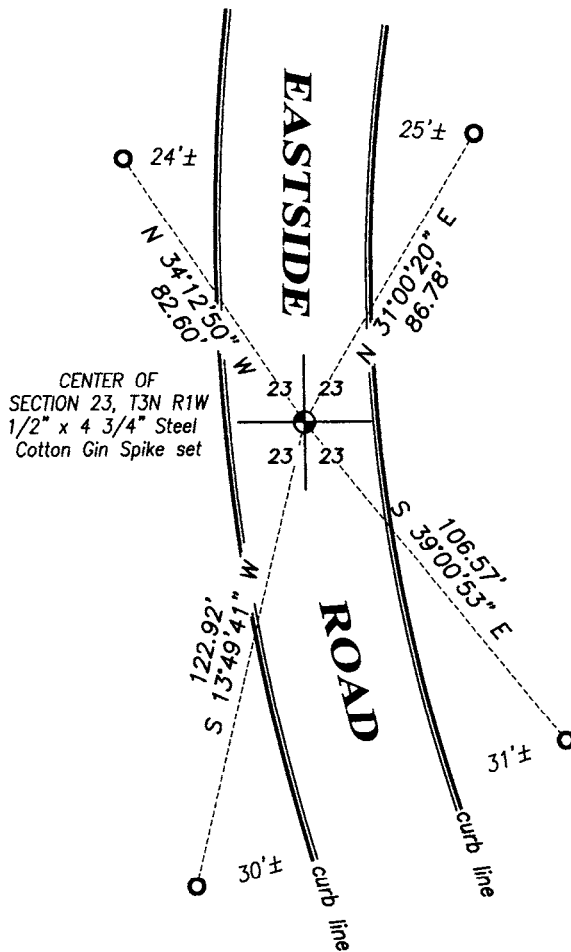
May 1, 1999, Larry Austin set a 1" Rebar with a Grant County Aluminum Cap at the corners location and prepared a tie sheet. In September 20, 2004, Larry Austin reset the corner and new ties and filed a new tie sheet for the corner.

DESCRIPTION OF CORNER EVIDENCE FOUND:

Monument could not be recovered. I found four ties established by Larry Austin on a tie sheet dated 9-20-2004. I reset a 1/2" x 4 3/4" Steel Cotton Gin Spike at the corner location based upon these ties.

DESCRIPTION OF CORNER AND WITNESS MONUMENTS, references and accessories used to perpetuate the original or re-established location of this corner. Witnesses to corner location Shane Austin and Brandon Austin.

SKETCH:



4211 HWY 81 E, LANCASTER, WI 53813
 PHONE: 608-723-6363 FAX: 608-723-6702

JOB NO: 15s130
 H:CRD\15s130
 H:TIE\T3NR1W\78.5(B)

FIELDBOOK: TDSR
 DRAWN BY: AJ AUSTIN
 CREW: SW AUSTIN, BL AUSTIN

78.5

OCT 30 2015

GRANT COUNTY CERTIFIED LAND CORNER

CERTIFICATE:

I, LARRY L. AUSTIN, DO HEREBY CERTIFY THAT ON NINETEENTH DAY OF AUGUST, 1999, I FOUND MONUMENTED EVIDENCE OF THE NORTHEAST CORNER SECTION 11, TOWN 3 NORTH, RANGE 1 WEST, OF THE FOURTH PRINCIPAL MERIDIAN, AND I RE-ESTABLISHED SAID CORNER ACCORDING TO THE WISCONSIN STATUTES AS SHOWN AND DESCRIBED HEREON.

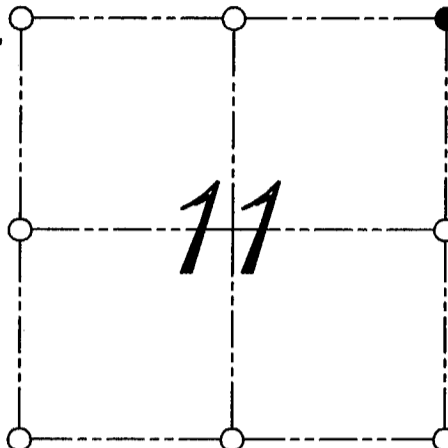
DATED THIS TWENTY-FOURTH DAY OF AUGUST, 1999

Larry L. Austin
LARRY L. AUSTIN S-1903



SEAL

CORNER NUMBER 23



● = CORNER LOCATION

NORTHEAST CORNER OF
SECTION 11, T 3 N R 1 W
TOWN OF PLATTEVILLE

HISTORY OF ORIGINAL CORNER ESTABLISHMENT:

CORNER WAS SET IN 1833 BY ROBERT CLARK

DESCRIPTION OF CORNER EVIDENCE FOUND:

I FOUND A 1 1/2" IRON PIPE AT AN OCCUPIED FENCE CORNER. I ACCEPTED THIS LOCATION AFTER AN E.D.M. AND G.P.S. TRAVERSE OF THE AREA.

DESCRIPTION OF CORNER AND WITNESS MONUMENTS, REFERENCES AND ACCESSORIES USED TO PERPETUATE THE ORIGINAL OR RE-ESTABLISHED LOCATION OF THIS CORNER:
WITNESS TO THE CORNER LOCATION: BOBBY SEDGWICK ; SHELBY BLINDERT

SKETCH:

