

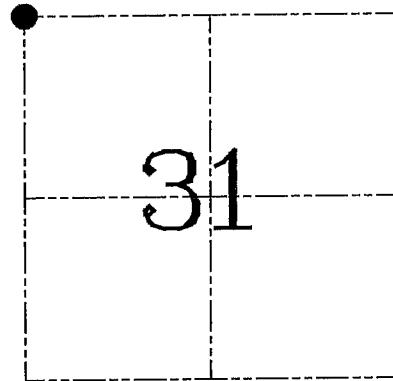
U.S. PUBLIC LAND SURVEY MONUMENT RECORD – GRANT COUNTY, WI
Section 31, Town 2 North Range 2 West, Town of Paris

CERTIFICATE

I, Larry L. Austin, do hereby certify that the corner location on this record was determined by me and/or under my direct supervision and that this U.S. public land survey monument record is correct and complete to the best of my knowledge and belief.

Dated this 14th day of August, 2003

Larry L. Austin
 Larry L. Austin S-1903,



● = CORNER LOCATION

HISTORY OF CORNER ESTABLISHMENT

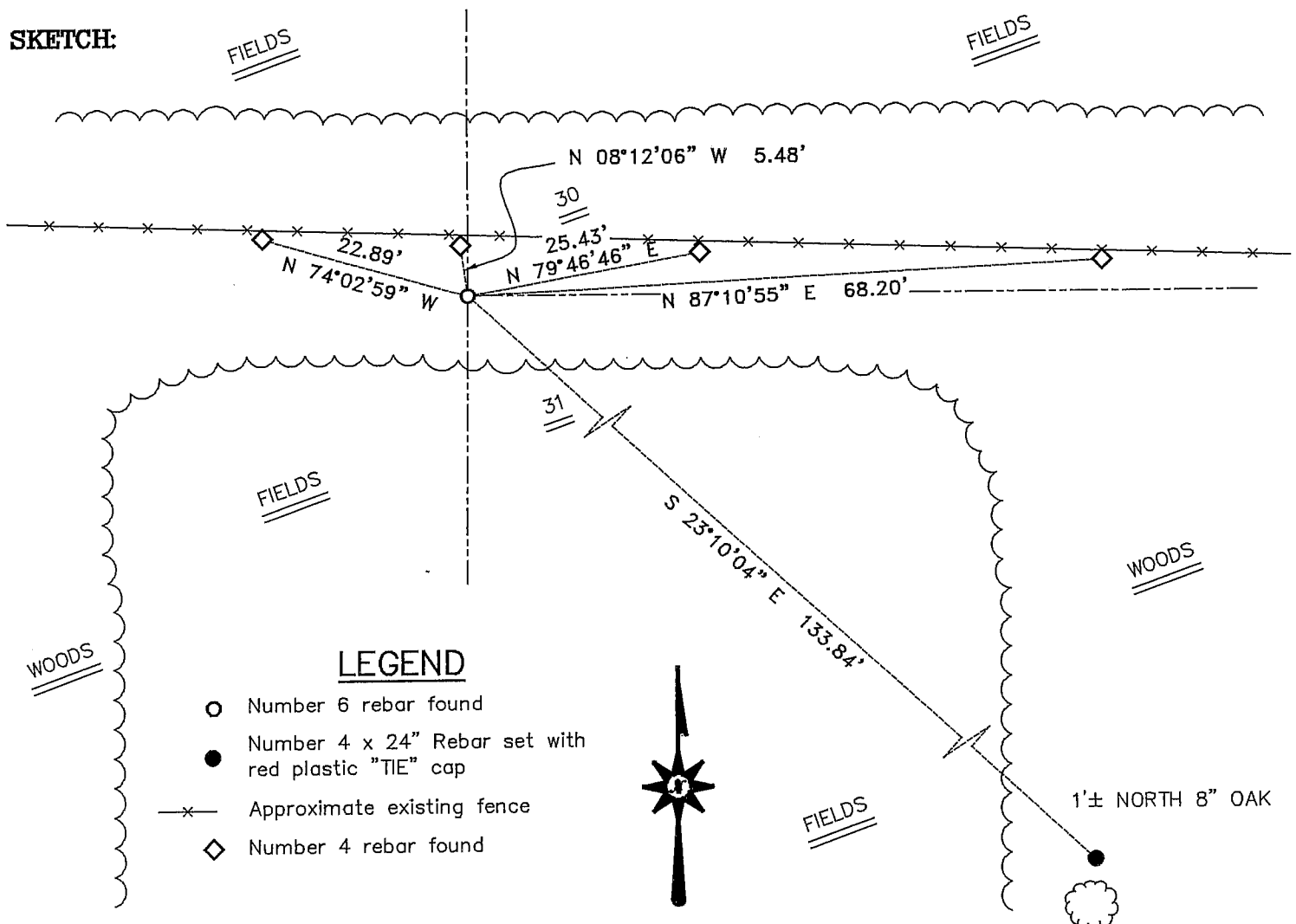
Corner was originally set in 1833 by Lyon. Corner was reset in 1941 by the Army Corps of Engineers. In 1984 Midstates Associates showed the location of the corner in relation to a condominium plat for Platte River Shores.

DESCRIPTION OF CORNER EVIDENCE FOUND

I reset the corner using the condominium plat. Verified this location using EDM & GPS methods.

DESCRIPTION OF CORNER AND WITNESS MONUMENTS, references and accessories used to perpetuate the original or re-established location of this corner. Witnesses to corner location Bobby Sedgwick & Shelby Blindert & Brad Digman

SKETCH:



LEGEND

- Number 6 rebar found
- Number 4 x 24" Rebar set with red plastic "TIE" cap
- x— Approximate existing fence
- ◇ Number 4 rebar found

SKETCH NOT TO SCALE

AUSTIN ENGINEERING, LLC

4211 HWY 81 EAST, LANCASTER, WI 53813
 PHONE 608-723-6363 FAX 608-723-6702

FIELDBOOK: TDS RNGR, 2307

G: \T2NR2W\23
 H: \TIE\T2NR2W\113
 JOB NUMBER 03S196

DRAWN BY: SW AUSTIN
 APPROVED: LL AUSTIN

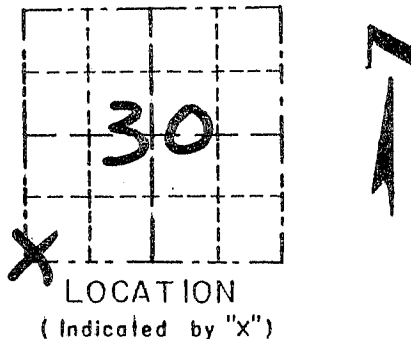
CORNER NUMBER 113

GRANT COUNTY

Survey Monument Record

TYPE OF MONUMENT 3/4" X 24" IRON BAR SET
 STATE PLANE COORDINATES: N _____
 E _____
 ELEVATION — M.S.L. DATUM: _____
 THETA ANGLE: _____
 FIELD BOOK: 96-12
 PAGE: 16

CORNER NO. 113
 SECTION 30
 TOWN 2N
 RANGE 2W



BASIS FOR MONUMENT LOCATION

(Use reverse side if necessary)

CORNER SET IN 1833 BY LUCIUS LYON, CORNER THEN WAS RESET IN 1841 BY SEAL: CORPS OF ENGINEERS, U.S. ARMY. THEN IN 1984 MID-STATE ASSOCIATES, INC. SHOWED THE LOCATION IN RELATION TO A CONDOMINIUM PLAT FOR PLATTE RIVER SHORES. I RESET IT USING THE CONDOMINIUM PLAT. VERIFIED ITS LOCATION USING EDM TRAVERSE.



CERTIFIED CORRECT

Randy R. Rust
 Registered Land Surveyor

DATE: 8/29/96

TIE SKETCH

Show at least three (3) ties and monument

