

SECTION CORNER TIE SHEET

To the west 1/4 corner of Section 19, Town 2 North, Range 2 West, Paris Township, Grant County, Wisconsin.

I, Terrance L. Genske, hereby certify that I have complied with Wisconsin Statutes, Statutes of the United States, and the rules and regulations made by the Secretary of the Interior in the location of the corner shown below.

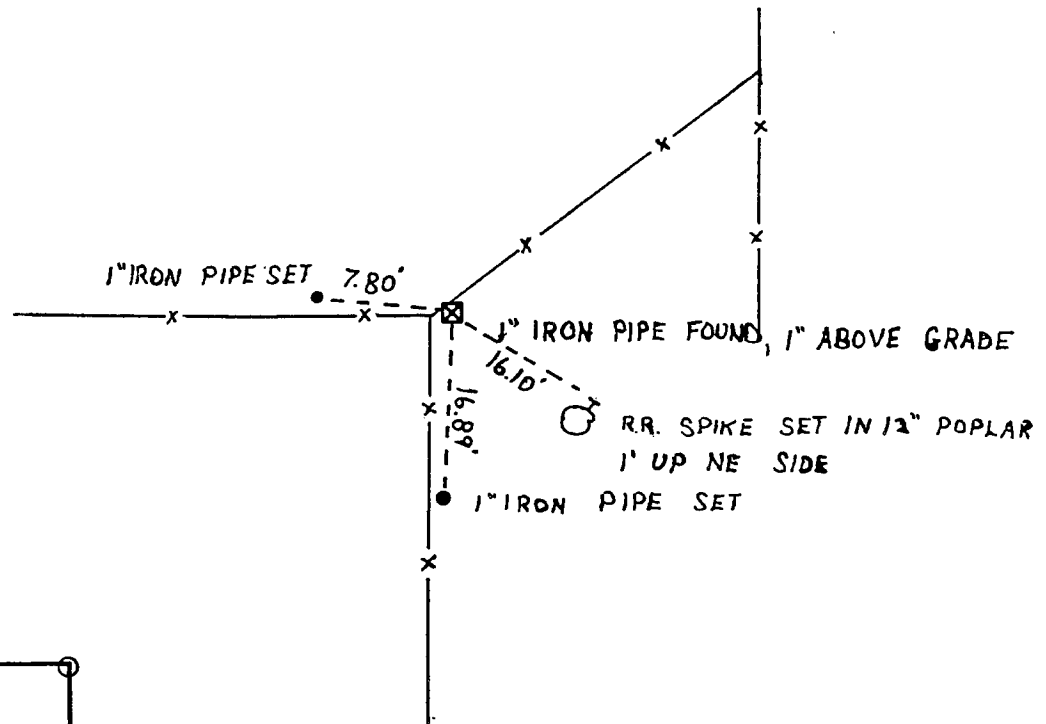
Terrance L. Genske
 Terrance L. Genske
 6/18/80



Description of Original Monument and Accessories

Wood post set by Lucius Lyon in February, 1832
 White oak 17" S18W 51 links
 White oak 14" N11W 56 links

Monument and Accessories Set



Description of Corner Evidence

Found an existing 1" iron pipe at an old fence intersection.

