

**U.S. PUBLIC LAND SURVEY MONUMENT RECORD – GRANT COUNTY, WI**

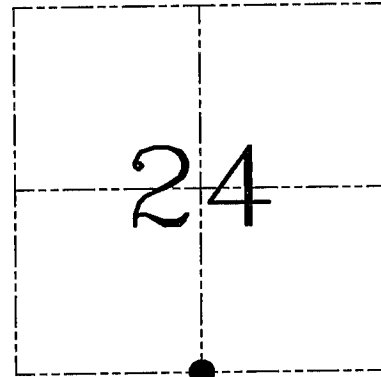
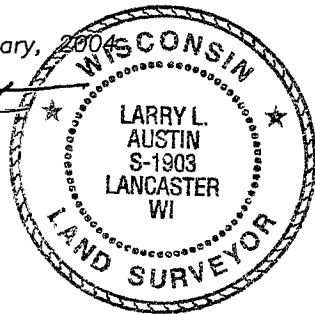
**Section 24, Town 2 North Range 3 West, Town of Potosi**

CERTIFICATE

I, Larry L. Austin, do hereby certify that the corner location on this record was determined by me and/or under my direct supervision and that this U.S. public land survey monument record is correct and complete to the best of my knowledge and belief.

Dated this 29th day of January, 2004

*Larry L. Austin*  
Larry L. Austin S-1903



● = CORNER LOCATION

HISTORY OF CORNER ESTABLISHMENT

Corner was originally set in 1833 by Lyon.  
No other record of the corner was found.

DESCRIPTION OF CORNER EVIDENCE FOUND

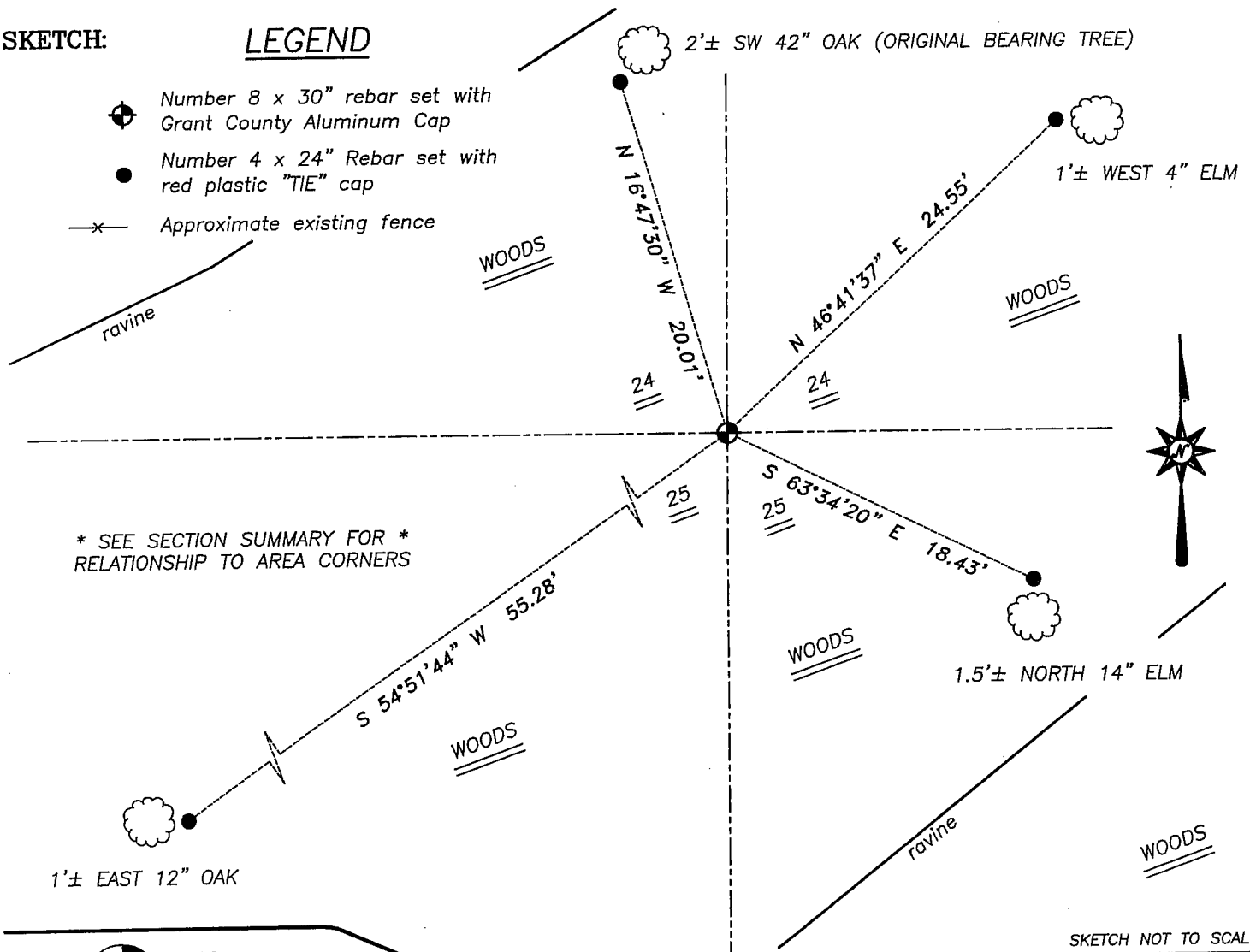
I found the original location of the post. Discoloration of soil and one of the original witness trees was found. (SEE PHOTOS) Verified this location using EDM & GPS methods.

DESCRIPTION OF CORNER AND WITNESS MONUMENTS, references and accessories used to perpetuate the original or re-established location of this corner. Witnesses to corner location Bobby Sedgwick & Shelby Blindert & Brad Digman

**SKETCH:**

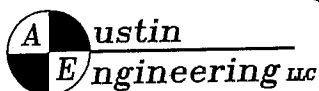
LEGEND

- Number 8 x 30" rebar set with Grant County Aluminum Cap
- Number 4 x 24" Rebar set with red plastic "TIE" cap
- x— Approximate existing fence



\* SEE SECTION SUMMARY FOR \*  
RELATIONSHIP TO AREA CORNERS

SKETCH NOT TO SCALE



4211 HWY 81 E, LANCASTER, WI 53813  
PHONE 608-723-6363 FAX 608-723-6702

JOB NUMBER 03S288  
FIELDBOOK: TSDR, 2321  
G:\T2NR3W\12  
H:\TIE\T2NR3W\82

DRAWN BY: SW AUSTIN  
APPROVED: LL AUSTIN

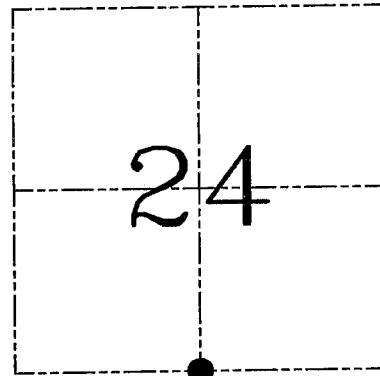
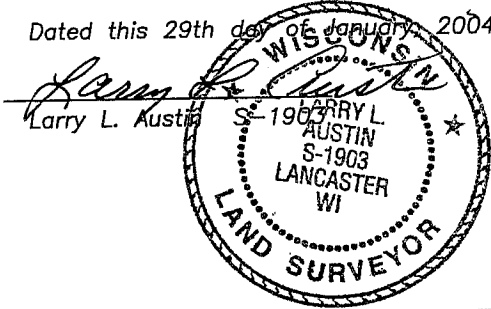
SHEET 1 OF 2

**U.S. PUBLIC LAND SURVEY MONUMENT RECORD – GRANT COUNTY, WI**  
**Section 24, Town 3 North Range 2 West, Town of Potosi**

CERTIFICATE

I, Larry L. Austin, do hereby certify that the corner location on this record was determined by me and/or under my direct supervision and that this U.S. public land survey monument record is correct and complete to the best of my knowledge and belief.

Dated this 29th day of January, 2004



● = CORNER LOCATION

HISTORY OF CORNER ESTABLISHMENT

Corner was originally set in 1833 by Lyon.  
 No other record of the corner was found.

DESCRIPTION OF CORNER EVIDENCE FOUND

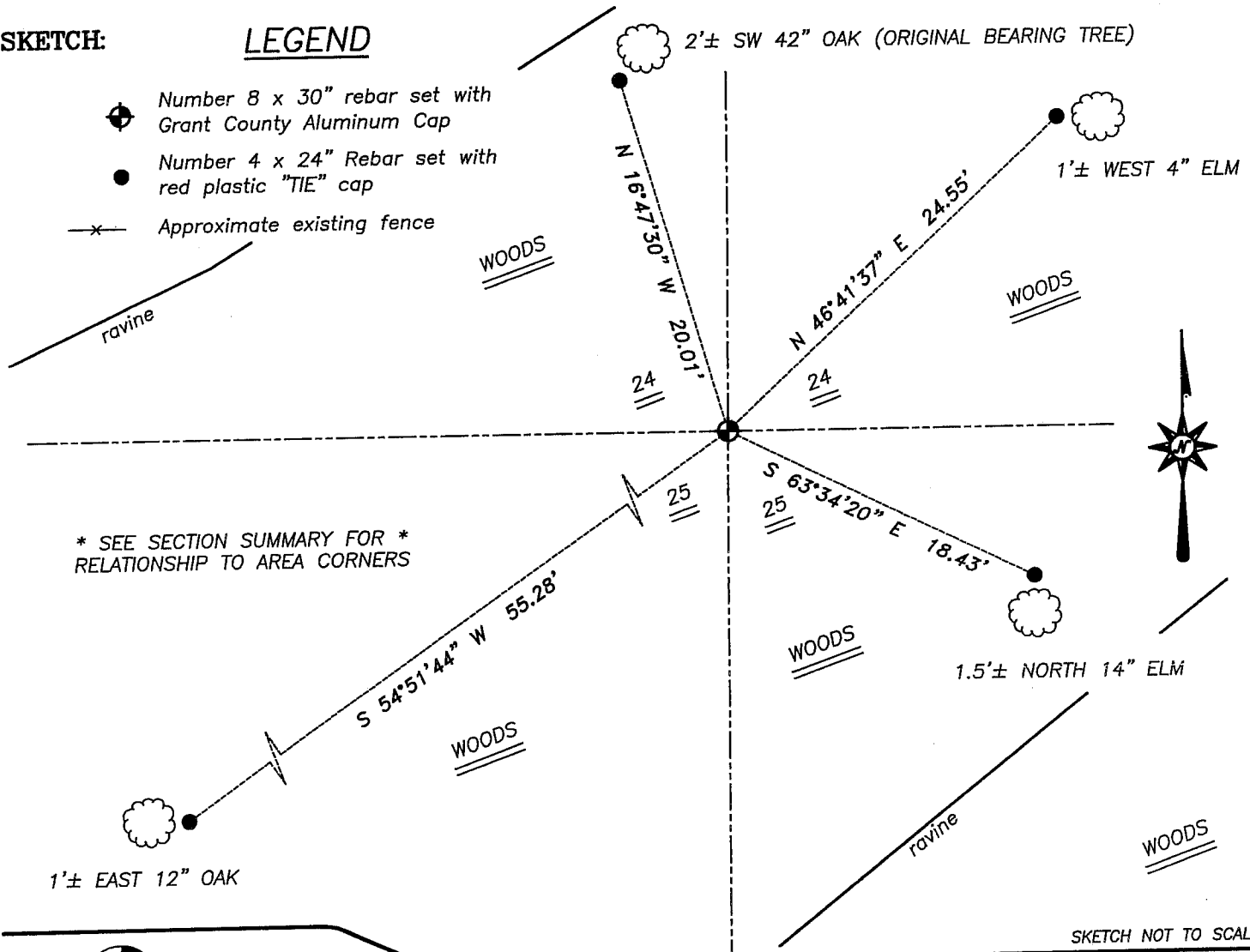
I found the original location of the post. Discoloration of soil and one of the original witness trees was found. (SEE PHOTOS) Verified this location using EDM & GPS methods.

DESCRIPTION OF CORNER AND WITNESS MONUMENTS, references and accessories used to perpetuate the original or re-established location of this corner. Witnesses to corner location Bobby Sedgwick & Shelby Blindert & Brad Digman

**SKETCH:**

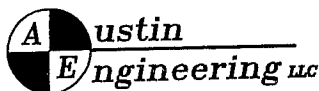
LEGEND

- ⊕ Number 8 x 30" rebar set with Grant County Aluminum Cap
- Number 4 x 24" Rebar set with red plastic "TIE" cap
- x— Approximate existing fence



\* SEE SECTION SUMMARY FOR \*  
 RELATIONSHIP TO AREA CORNERS

SKETCH NOT TO SCALE



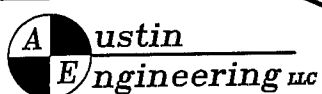
4211 HWY 81 E, LANCASTER, WI 53813  
 PHONE 608-723-6363 FAX 608-723-6702

JOB NUMBER 03S288  
 FIELDBOOK: TSDR, 2321  
 G:\T2NR3W\12  
 H:\TIE\T2NR3W\82

DRAWN BY: SW AUSTIN  
 APPROVED: LL AUSTIN

U.S. PUBLIC LAND SURVEY MONUMENT RECORD - GRANT COUNTY, WI

Section 24, Town 3 North Range 2 West, Town of Potosi  
2 3



4211 HWY 81 E, LANCASTER, WI 53813  
PHONE 608-723-6363 FAX 608-723-6702

JOB NUMBER 03S288  
FIELDBOOK: TSDR, 2321  
G:\T2NR3W\12  
H:\TIE\T2NR3W\82

DRAWN BY: SW AUSTIN  
APPROVED: LL AUSTIN

SHEET 2 OF 2