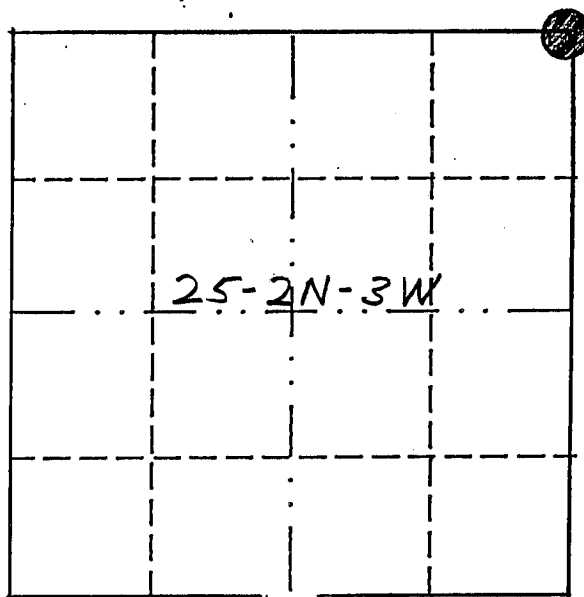


U.S. PUBLIC LAND SURVEY MONUMENT RECORD

THIS RECORD SHALL SHOW THE LOCATION OF THE CORNER AND SHALL INCLUDE ALL OF THE FOLLOWING NINE ELEMENTS (A THROUGH I).

(a) Identify the corner by reference to the U.S. public land survey system.

NE CORNER OF SECTION
25-T2N-R3W



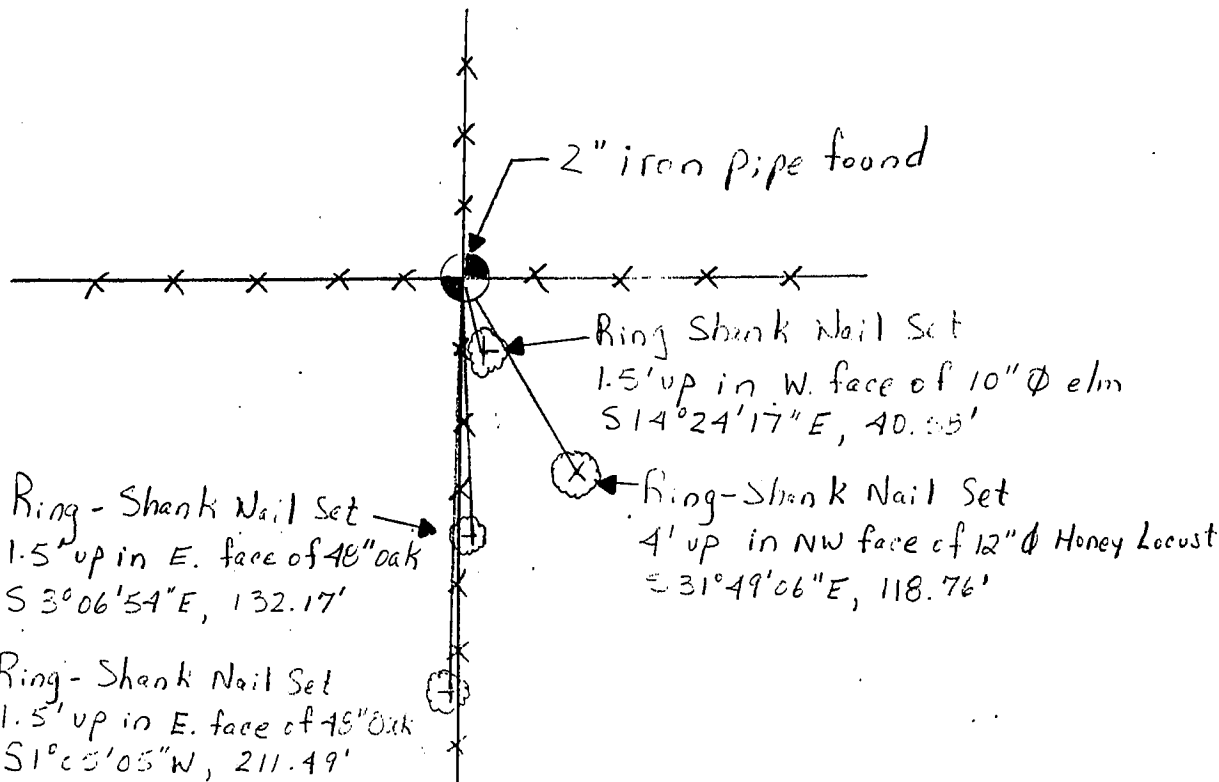
● = corner monument restored.

(b) Describe any record evidence, monument evidence, occupational evidence, testimonial evidence or any other material evidence you considered, and whether the monument was found or placed.

FOUND AND ACCEPTED A 2" IRON PIPE AT A 4 WAY FENCE INTERSECTION. THERE ARE MANY SURVEYS BY DIXON DATED IN THE 1960'S TIED TO THIS CORNER.

(c) In the plan view drawing below, provide reference ties to at least four witness monuments, or, if the location is within a municipality, to at least two witness monuments. (Witness monuments shall be made of concrete, natural stone, iron or other equally durable material.) Describe witness monuments.

(d) Show a plan view drawing depicting the relevant monuments and reference ties which is sufficient in detail to enable accurate relocation of the corner monument if the corner monument is disturbed. Indicate north.



(e) Describe any material discrepancy between the location of the corner as restored or reestablished and the location of that corner as previously restored or reestablished by distance and direction. Show the discrepancy on the plan view drawing under (d), above. Show the distances between the corner as previously restored or reestablished and (1) the corner as restored or reestablished, and (2) to at least two of the witness monuments shown on the drawing in (d), above.

N/A

(f) Was the corner restored through acceptance of (1) an obliterated evidence location, or (2) a found perpetuated location?

N/A

(g) & (h) Was the corner reestablished through lost corner proportionate methods? If so, show the method, including the directions and distances to other public land survey corners used as evidence or used for proportioning in determining the corner location?

N/A

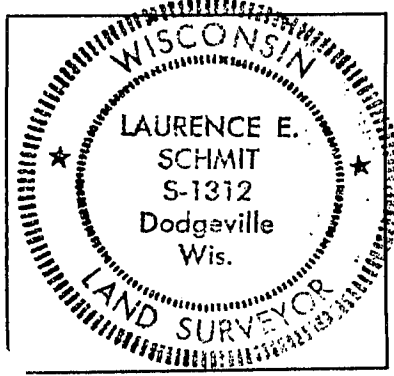
(i) I, LAURENCE E. SCHMIT
(type or print name) certify that the corner location shown on this record was determined by me or under my direction and control and that this U.S. Public Land Survey Monument Record is correct and complete to the best of my knowledge and belief.

Laurence E. Schmit

4-9-94

Signature

Date



affix land surveyor seal

SECTION CORNER TIE SHEET

To the SW corner of Section 19, Town 2 North, Range 2 West, Paris Township, Grant County, Wisconsin.

I, Terrance L. Genske, hereby certify that I have complied with Wisconsin Statutes, Statutes of the United States, and the rules and regulations made by the Secretary of the Interior in the location of the corner shown below.

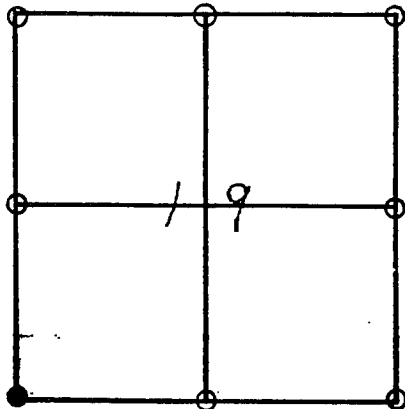
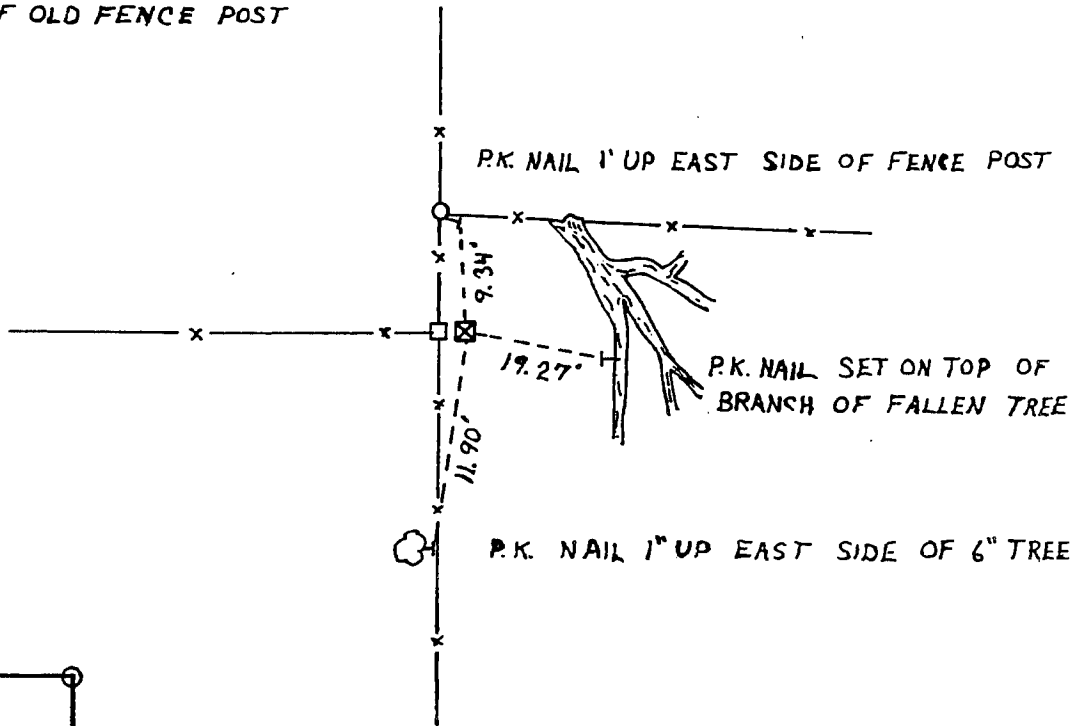
Terrance L. Genske
Terrance L. Genske
6/18/80

Description of Original Monument and Accessories

Wood post set by Lucius Lyon in February, 1832
White oak 22" S39W 102 links
White oak 16" N34W 16 links

Monument and Accessories

☒ R.R. SPIKE SET AT BASE OF OLD FENCE POST



Description of Corner Evidence

Corner set by existing physical evidence and common report.