

# U.S. PUBLIC LAND SURVEY MONUMENT RECORD - GRANT COUNTY, WI

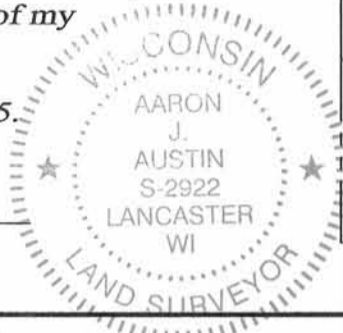
Section 12, Town 2 North Range 3 West, Town of Potosi

**CERTIFICATE:**

I, Aaron J. Austin, do hereby certify that the corner location on this record was determined by me and/or under my direct supervision and that this U.S. Public Land Survey Monument Record is correct and complete to the best of my knowledge and belief.

Dated this 2nd day of January, 2015.

*Aaron J. Austin*  
 Aaron J. Austin, S-2922



● = CORNER LOCATION

**HISTORY OF CORNER ESTABLISHMENT:**

- 1833-Lucius Lyon set original corner.
- 1849-Struntz tied to the corner on a Survey in Book "B", Page 165.
- 1892-Sampson tied to the corner on a Survey in Book D, Page 213.
- 1995-L. Austin set a 1" iron bar at this corner on a Survey in Book W, Page 22 and prepared a Grant County Survey Monument record for this corner.
- 1998-Buck tied to the corner on Certified Survey Map No. 491.
- 1998-Buck tied to the corner on Certified Survey Map No. 496.
- 2002-L. Austin tied to the corner on a Survey in Book 10, Page 80.
- 2003-L. Austin tied to the corner on a Survey in Book 14, Page 21.
- 2005-L. Austin tied to the corner on a Survey in Book 16, Page 70.
- 2005-L. Austin tied to the corner on a Survey in Book 17, Page 30.
- 2005-L. Austin tied to the corner on a Survey in Book 18, Page 1.

**DESCRIPTION OF CORNER EVIDENCE FOUND:**

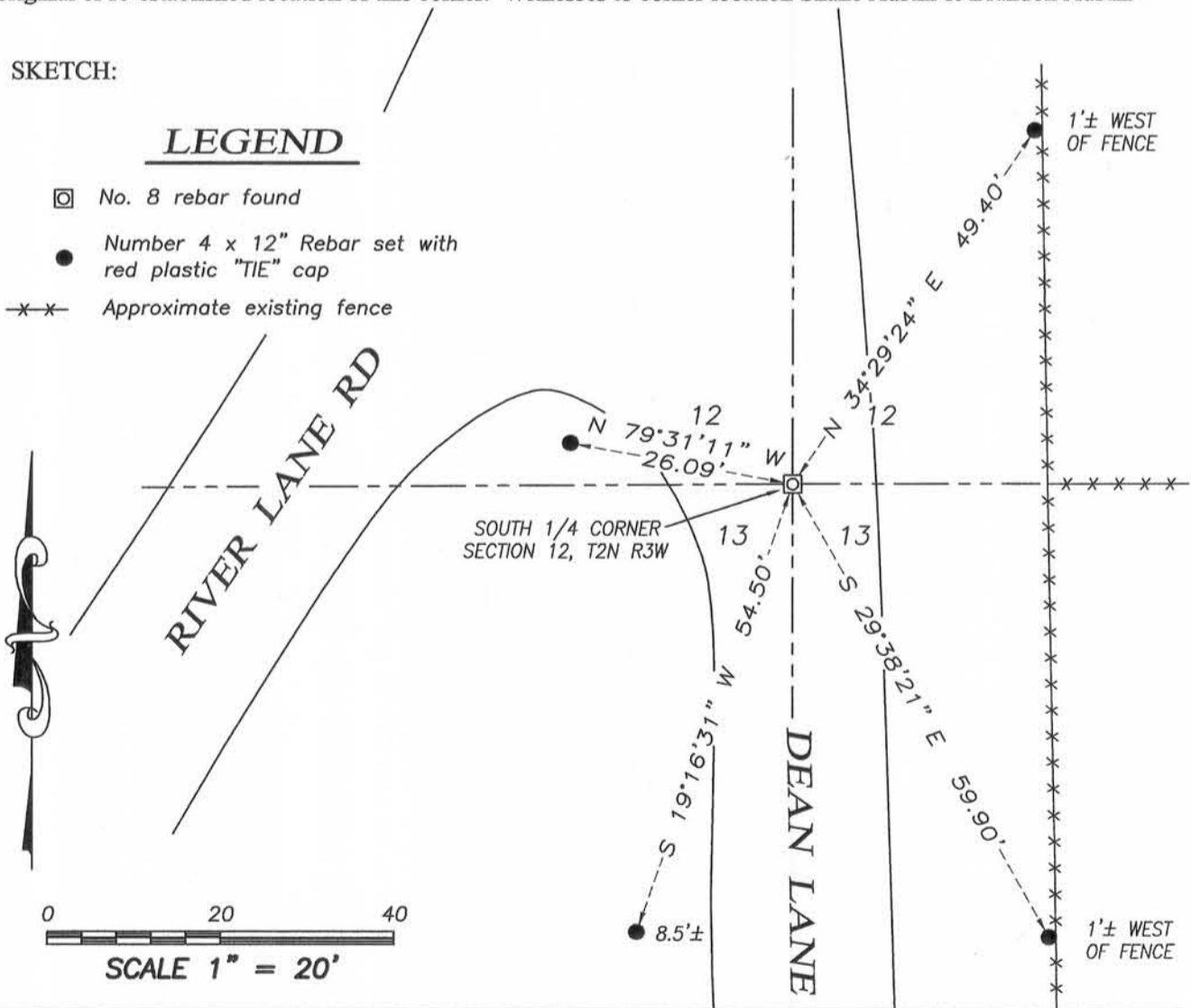
I found and accepted the 1" iron bar set by Larry Austin. I was unable to recover witness monuments for the corner and set new monuments as shown hereon. This corner was verified by G.P.S. Methods.

**DESCRIPTION OF CORNER AND WITNESS MONUMENTS, references and accessories used to perpetuate the original or re-established location of this corner. Witnesses to corner location Shane Austin & Brandon Austin**

**SKETCH:**

**LEGEND**

- ☐ No. 8 rebar found
- Number 4 x 12" Rebar set with red plastic "TIE" cap
- x-x- Approximate existing fence



4211 HWY 81 E, LANCASTER, WI 53813  
 PHONE: 608-723-6363 FAX: 608-723-6702

JOB NO: 14s200  
 H:CRD\14s200  
 H:\TIE\T2NR3W\42

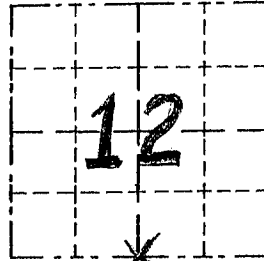
FIELDBOOK: TDSR  
 DRAWN BY: SW AUSTIN  
 CREW: SWA-BLA

# GRANT COUNTY

## Survey Monument Record

TYPE OF MONUMENT 1" x 30" REBAR  
 STATE PLANE COORDINATES: N \_\_\_\_\_  
 E \_\_\_\_\_  
 ELEVATION — M.S.L. DATUM: \_\_\_\_\_  
 THETA ANGLE: \_\_\_\_\_  
 FIELD BOOK: \_\_\_\_\_  
 PAGE \_\_\_\_\_

CORNER NO. \_\_\_\_\_  
 SECTION 12  
 TOWN T2N  
 RANGE R3W



LOCATION  
 (Indicated by "X")

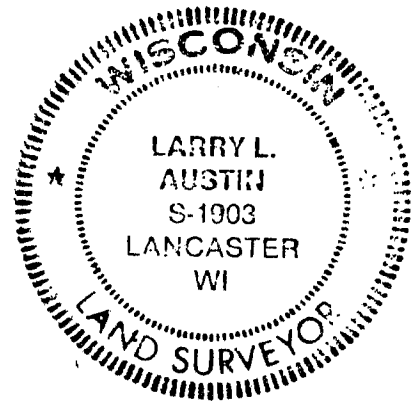
### BASIS FOR MONUMENT LOCATION

(Use reverse side if necessary)

Show info such as: History of corner, with reference to Vol. and pg., dates, surveyor; exact description of monument replaced; if location computed, by taped or EDM traverse; landowner, remarks, etc.

SEAL:

CORNER WAS ORIGINALLY SET BY L. LYON IN 1833; I SET THE CORNER BASED ON OCCUPATION & VERIFIED BY EDM TRAVERSE OF THE AREA. NO RECORD OF THE CORNER FOUND SINCE THE ORIGINAL SURVEYS.



CERTIFIED CORRECT

Larry L. Austin  
 Registered Land Surveyor  
 DATE: 8/15/95

### TIE SKETCH

Show at least three (3) ties and monument

