

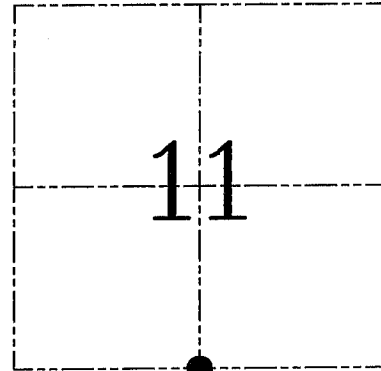
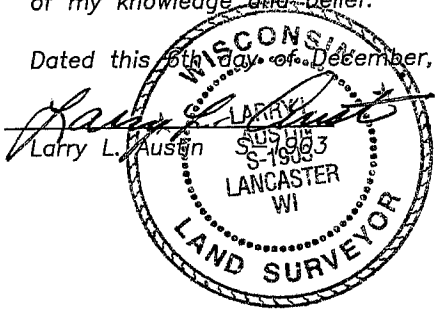
U.S. PUBLIC LAND SURVEY MONUMENT RECORD – GRANT COUNTY, WI

Section 11, Town 2 North Range 3 West, Town of Potosi

CERTIFICATE

I, Larry L. Austin, do hereby certify that the corner location on this record was determined by me and/or under my direct supervision and that this U.S. public land survey monument record is correct and complete to the best of my knowledge and belief.

Dated this 6th day of December, 2004



● = CORNER LOCATION

HISTORY OF CORNER ESTABLISHMENT

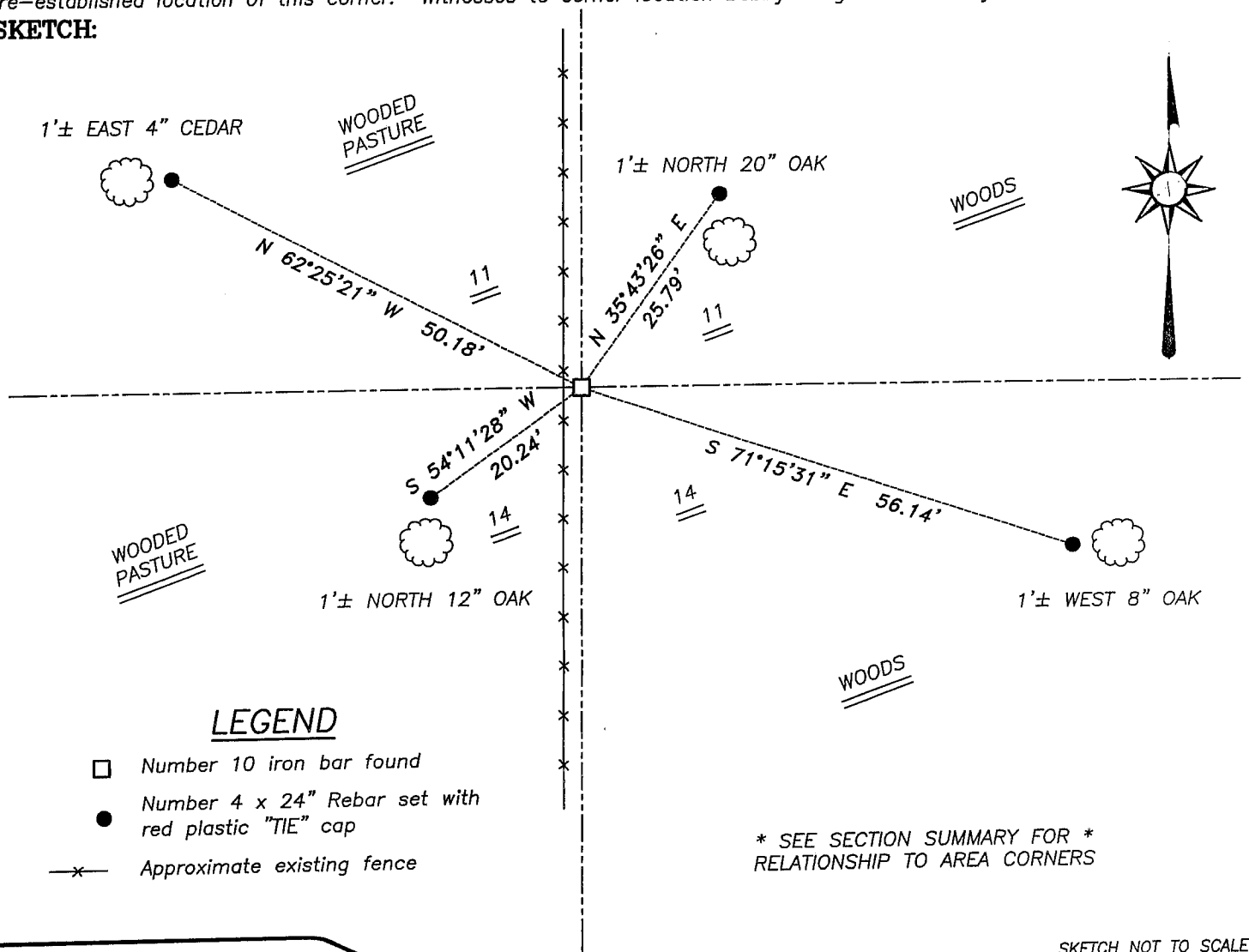
Corner was originally set in 1833 by Lyon. In 1849 Stuntz set new bearings to the corner. In 1876 Barber also tied to this corner while surveying in Section 14. In 1936 the Army Corp. of Engineers tied to the corner in conjunction with flowage easements. In 1972 Ralph also tied to this corner. In 1977 Bowden set a Number 10 iron bar.

DESCRIPTION OF CORNER EVIDENCE FOUND

I found Bowden's Number 10 iron bar and accepted it's location after an EDM & GPS traverse of the area.

DESCRIPTION OF CORNER AND WITNESS MONUMENTS, references and accessories used to perpetuate the original or re-established location of this corner. Witnesses to corner location Bobby Sedgwick & Shelby Blindert & Brad Digman

SKETCH:

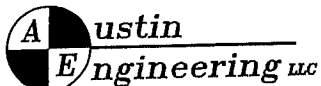


LEGEND

- Number 10 iron bar found
- Number 4 x 24" Rebar set with red plastic "TIE" cap
- x- Approximate existing fence

* SEE SECTION SUMMARY FOR *
RELATIONSHIP TO AREA CORNERS

SKETCH NOT TO SCALE



4211 HWY 81 E, LANCASTER, WI 53813
PHONE 608-723-6363 FAX 608-723-6702

JOB NUMBER 04S180
FIELDBOOK: TSDR, 2408
G:\T2NR3W\12
H:\TIE\T2NR3W\44

DRAWN BY: SW AUSTIN
APPROVED: LL AUSTIN